



PERFORMANCE 40 & CAPE 31 UK NATIONAL CHAMPIONSHIPS 2021

4 – 5 SEPTEMBER

COWES

ORGANISING AUTHORITY
ROYAL YACHT SQUADRON

SAILING INSTRUCTIONS

The notation '[DP]' in a rule in the Sailing Instructions means that the penalty for a breach of that rule may, at the discretion of the protest committee, be less than disqualification.

The notation '[NP]' in a rule of the Sailing Instructions (SIs) means that a boat may not protest another boat for breaking that rule. This changes RRS 60.1(a).

1. RULES

- 1.1 The event is governed by the rules as defined in The Racing Rules of Sailing (RRS).
- 1.2 The National Authority ([RYA Prescriptions](#)) shall apply.
- 1.3 World Sailing [Offshore Special Regulations \(Category 4\)](#) shall apply.
- 1.4 Rules of the Performance 40 Class (P40 Class) shall apply to the P40 Division.
- 1.5 Rules of the UK Cape 31 One Design Class (Version 1.3) shall apply to the Cape 31 Division.
- 1.6 IRC Rules 2021 Parts A, B, and C shall apply, except that IRC rule 21.1.5 (d) & (e) shall not apply.
- 1.7 Notices to Mariners for the Ports of [Southampton](#), [Portsmouth](#) and [Cowes](#). [DP]

2. CHANGES TO SAILING INSTRUCTIONS

- 2.1 Any change to the Sailing Instructions (SIs) made ashore will be posted by 0900 on the day it will take effect, except that any change to the schedule of races will be posted by 2000 on the day before it will take effect.
- 2.2 Changes to a Sailing Instruction may be made on the water using VHF Radio to communicate with competitors.

3. COMMUNICATIONS WITH COMPETITORS

- 3.1 Notices to competitors will be posted on the Official Notice Board (ONB).
- 3.2 The ONB will be online at www.rys.org.uk.
- 3.3 The Race Office is in the Royal Yacht Squadron (RYS).
- 3.4 The Race Committee intends to broadcast race information and course information by VHF Ch 05.
- 3.5 Competitors wishing to communicate with the Race Committee should do so on VHF Ch 77.
- 3.6 While racing, except in emergency, a boat shall not make voice or data transmissions and shall not receive voice or data communication that is not available to all boats.

4. CODE OF CONDUCT

- 4.1 Competitors and support persons shall comply with reasonable requests from race officials.
- 4.2 Competitors and support persons shall handle or place any equipment or advertising provided by the organising authority with care, seamanship and in accordance with any instructions for its use and without interfering with its functionality.

5. SIGNALS MADE ASHORE AND AFLOAT

- 5.1 Signals made ashore will be displayed at the RYS Lodge Flagstaff.
- 5.2 When flag AP is displayed ashore, "1 minute" is replaced by "not less than 45 minutes". This changes Race Signals AP.
- 5.3 To alert boats that a race or sequence of races will begin soon, an orange flag will be displayed with one sound signal five (5) minutes before a warning signal is displayed.


6. SCHEDULE OF RACING

- 6.1 The intention of the Race Committee is to run six (6) races over the two days of the Regatta.
- 6.2 On the last day of racing, no warning signal will be made after 1430.
- 6.3 Schedule including times of HW Portsmouth in BST.

Day	Event Time or First Warning Signal	Notes
Sat 5 Sept HW Ports 1050 BST 4.2m	0900	Time check and RO briefing by WhatsApp.
	1025	
	1035	Cape 31 Race 1 Warning Signal. P40 Race 1 Warning Signal. Races 2 & 3 asap after each finish.
Sun 6 Sept HW Ports 1130 BST 4.4m	0900	Time check and RO briefing by WhatsApp.
	1025	
	1035	Cape 31 Race 4 Warning Signal. P40 Race 4 Warning Signal. Races 5 & 6 asap after finish.

7. CLASS FLAGS

7.1 The class flag will be:

Class Flag Cape 31	Black field with Cape31 logo
P40	ICOS Numeral Pen 1 

8. RACING AREA

8.1 Racing will take place from a Committee Vessel in the Central Solent. The approximate location of the Committee Vessel will be announced on VHF Channel 05.

9. COURSES

- 9.1 The format for racing will be windward/leeward. See Addendum A.
- 9.2 Course letters and number of laps for windward leeward courses will be shown on the Committee Vessel.
- 9.3 The diagrams in Addendum A of these Sailing Instructions show the courses, including the approximate angles between legs, the order in which the marks are to be passed, and the side on which each mark is to be left.
- 9.4 The final race each day will be a “round the cans” race with courses announced over VHF using the Solent Cruising & Racing Association (SCRA) Two Character Codes with a finish on the RYS Line.
- 9.5 A chartlet showing the Solent Two Character Codes can be found in Addendum B of these Sailing Instructions.
- 9.6 No later than the Warning Signal, the Race Committee Vessel will display the approximate compass bearing of the first leg and the course to be sailed.

10. MARKS

- 10.1 With reference to Addendum A, marks 1, 1a, 4s & 4p will be orange inflatable marks.
- 10.2 With reference to gate marks 4p/4s, if only one gate mark is in position, that mark shall be rounded to port.
- 10.3 The starting marks will be a Committee Vessel and a black inflatable mark.
- 10.4 The finishing marks for Windward Leeward (W/L) courses will be a Committee Vessel and a black inflatable mark.
- 10.5 The finishing marks for the “Round the Cans” races will be between the RYS Main Flagstaff and an Orange Inflatable Buoy approximately 500m north of the RYS Main Flagstaff.
- 10.6 When a new mark has been laid to change the next leg of a W/L course it will be a black inflatable mark. If the new mark is a windward mark, then the offset mark 1a will not be laid and is no longer part of the course.

11. OBSTRUCTIONS

- 11.1 Boats shall not anchor or kedge in the Cowes Harbour fairway or within the area denoting power cables and gas pipes between Stone Point and Gurnard Bay, as shown on Admiralty Chart 2040, or within the mining ground area north east of Ryde Sand.
- 11.2 All boats shall comply with Associated British Ports Notice to Mariners No 09 of 2021 giving details of a Precautionary Area and Moving Prohibited Zone (MPZ). The MPZ shall rank as an obstruction for the purposes of RRS 19 and 20.
- 11.3 Whilst racing, boats shall pass to the north of the Cowes Breakwater.

12. THE START

- 12.1 Races will be started by using RRS 26 with the Warning Signal made 5 minutes before the Starting Signal.
- 12.2 The starting line will be between a staff displaying an orange flag on the Committee Vessel at the starboard end and the course side of the port-end starting mark.
- 12.3 The intended order of start is Cape 31 followed by P40. There will be a minimum of 5 minutes between the start of the Cape 31 and the warning of the P40.
- 12.4 Races will not be started in less than an average of 5 knots of wind established over the entire racecourse area. This limit may be higher if there is a strong current in the racing area.
- 12.5 Boats whose warning signal has not been made shall avoid the starting area during the starting sequence for other races.
- 12.6 If any part of a boat's hull is on the course side of the starting line during the two minutes before her starting signal and she is identified, the Race Committee will attempt to broadcast her sail number on VHF CH 05. Failure to make a broadcast or time it accurately will not be grounds for redress. This changes RRS 62.1(a).
- 12.7 If any part of a boat's hull is on the course side of the starting line at her starting signal and she is identified, the Race Committee will attempt to broadcast her sail number on VHF CH 05 after Flag X has been displayed, but not sooner than 30 seconds after the start. Delay or failure to do so is not grounds for redress. This changes RRS 62.1(a).

13. CHANGE OF THE NEXT LEG OF THE COURSE

- 13.1 When a change the next leg of the course has been signalled, the Race Committee will lay a new mark (or move the finishing line) and remove the original mark as soon as practicable. When in a subsequent change a new mark is replaced, it will be replaced by an original mark.
- 13.2 The position of any mark(s) may be adjusted by up to plus or minus 10 degrees relative to previous location and up to approximately 200 metres to windward or leeward without signalling Flag C, a direction signal, a length signal or a sound signal. This changes RRS 33.

14. THE FINISH

- 14.1 The finish line for Windward Leeward Courses will be between a staff displaying a blue flag on the Committee Signal Vessel and the course side of the port-end finishing mark. As shown in addendum A, it is the course side of the port-end finishing mark if you finish at the windward end, but the course side of the starboard-end mark if you finish at the leeward end.
- 14.2 The RYS Finishing Line for the "Round the Cans" races will be between the RYS Main Flagstaff and an Orange Inflatable Buoy approximately 500m north of the RYS Main Flagstaff.

15. PENALTY SYSTEM

- 15.1 RRS 44.1 is changed so that a boat may take a One-Turn Penalty when she may have broken one or more rules of Part 2 or rule 31 in an incident while racing.

16. TIME LIMITS

- 16.1 The following time limits will apply.
- (a) Mark 1 Time Limit. The time limit for the first boat to pass Mark 1 is 45 minutes.
 - (b) Race Time Limit. The time limit for the first boat to sail the course and finish is 90 minutes.
 - (c) Finishing Window. The time limit for boats to finish after the first boat sails the course and finishes is 30 minutes.
- 16.2 If no boat has passed Mark 1 within the Mark 1 Time Limit, or if no boat has finished within the Race Time Limit, the race shall be abandoned.
- 16.3 Boats still sailing more than 30 minutes after the first boat finishes shall be awarded the points for the place behind the last boat, which has finished the race within this time.
- 16.4 Target time for each race will be 55 minutes for W/L courses. Failure to meet the target time will not be grounds for redress. This changes RR62.1(a).

17. HEARING REQUESTS

- 17.1 Hearing forms will be available at the Race Office. Protest and requests for redress or reopening shall be delivered to the Race Office within the protest time limit. Contact mobile phone numbers should be included on the protest form.
- 17.2 The protest limit is 90 minutes after the last boat has finished the last race of the day or the Race Committee signals no more racing today, whichever is later.
- 17.3 Notices will be posted no later than 30 minutes after the protest time limit to inform competitors of the hearings in which they are parties or named as witnesses. Hearings will be held in the protest room located at the RYS.

- 17.4 Notices of Protests by the Race Committee, Technical Committee or Protest Committee will be posted to inform boats under RRS 61.1(B).
- 17.5 On the last scheduled day of racing a request for redress based on a protest committee decision shall be delivered no later than 30 minutes after the decision was posted. This changes RRS 62.2.

18. SCORING

- 18.1 The Low Point System of Appendix A will apply.
- 18.2 One (1) race shall be completed to constitute a series.
- 18.3 When one (1) to four (4) races have been completed a boats series score shall be the total of all her scores.
- 18.4 When four (4) or more races have been completed, a boat's score will be the total of her race scores excluding her worst score.

19. SAFETY REGULATIONS

- 19.1 A boat that retires from a race shall notify the Race Committee as soon as possible on VHF Ch 77 or by hailing an official Regatta support boat or rib. *[DP]*

20. REPLACEMENT OF CREW OR EQUIPMENT

- 20.1 Substitution of competitors is not allowed without the prior written permission of the Race Committee.
- 20.2 Substitution of damaged or lost equipment is not allowed unless authorised in writing by the Race Committee. Requests for substitution shall be made to the committee at the first reasonable opportunity, which may be after the race.

21. EQUIPMENT AND MEASUREMENT CHECKS

- 21.1 A boat or equipment may be inspected at any time for compliance with the Class Rules and Sailing Instructions.

22. SUPPLIED BOATS

- 22.1 Does not apply.

23. OFFICIAL VESSELS

- 23.1 The Committee Vessel (Signal Vessel) will be a large motor launch Call Sign Seamui.
- 23.2 Mark laying vessels will be RYS Ribs.

24. SUPPORT TEAMS

- 24.1 Team leaders, coaches and other support personnel must stay outside areas where boats are racing from the time of the preparatory signal for each start thereafter until all boats have finished or retired or the Race Committee signals a postponement, general recall or abandonment. *[DP]*
- 24.2 All support boats shall carry marine VHF radios and agree to assist the Race Committee if directed to do so. *[DP]*

25. TRASH DISPOSAL

- 25.1 Trash may be placed aboard official or support vessels.

26. HAUL OUT RESTRICTIONS

- 26.1 All boats shall be afloat by 1730 the day before the first race. [DP]
- 26.2 Boats shall not be hauled out during the Event except with and according to the terms of prior written permission of the race committee. [DP]

27. DIVING EQUIPMENT AND PLASTIC POOLS

- 27.1 Underwater breathing apparatus and plastic pools or their equivalent shall not be used around competing boats between the preparatory signal of the first race and the end of the event. [DP]
- 27.2 Keelboats shall not be cleaned below the waterline by any means between the preparatory signal of the first race and the end of the event. [DP]

28. PRIZES

- 28.1 The **Performance 40 National Championship Trophy** and the **Cape 31 National Championship Trophy** will be awarded to the boats with the best overall score in their relevant class.
- 28.2 Prizes may also be awarded to other boats.
- 28.3 Prizegiving will be held in the RYS as soon as possible after the last race has been completed and after any protest hearings.

29. RISK STATEMENT

- 29.1 Rule 3 of the Racing Rules of Sailing states: "The responsibility for a boat's decision to participate in a race or to continue racing is hers alone."
- 29.2 Sailing is by its nature an unpredictable sport and therefore involves an element of risk. By taking part in the event, each competitor agrees and acknowledges that:

- (a) They are aware of the inherent element of risk involved in the sport and accept responsibility for the exposure of themselves, their crew and their boat to such inherent risk whilst taking part in the event;
- (b) They are responsible for the safety of themselves, their crew, their boat and their other property whether afloat or ashore;
- (c) They accept responsibility for any injury, damage or loss to the extent caused by their own actions or omissions;
- (d) Their boat is in good order, equipped to sail in the event and they are fit to participate;
- (e) The provision of a race management team, patrol boats, and other officials and volunteers by the event organiser does not relieve them of their own responsibilities;
- (f) The provision of patrol boat cover is limited to such assistance, particularly in extreme weather conditions, as can be practically provided in the circumstances;
- (g) It is their responsibility to familiarise themselves with any risks specific to this venue or this event drawn to their attention in any rules and information produced for the venue or event and to attend any competitor or safety briefing held for the event;
- (h) They are responsible for ensuring that their boat is equipped and seaworthy so as to be able to face extremes of weather; that there is a crew sufficient in

number, experience and fitness to withstand such weather; and that the safety equipment is properly maintained, stowed and in date and is familiar to the crew.

29.3 COVID Statement

- (a) By taking part in any of the events covered by this Notice of Race, each competitor agrees and acknowledges that they are responsible for complying with any regulations in force from time to time in respect of COVID-19 and for complying with the Royal Yacht Squadron COVID-19 procedures.
- (b) The penalty for a breach of this rule may, at the discretion of the Protest Committee, be less than disqualification. Boats may not protest for breaches of this rule. This changes rule 60.1(a). (DP)

30. INSURANCE

All entrants shall be covered by a minimum Third Party Liability indemnity of £3 million, or equivalent, and declare that such cover will be maintained in full force throughout the event.

ADDENDUM A

Course Illustrations – Windward Leeward

L

Course: Leeward finish

Signal	Mark Rounding Order
L2	Start – 1 – 4s/4p – 1 – Finish
L3	Start – 1 – 4s/4p – 1 – 4s/4p – 1 – Finish
L4	Start – 1 – 4s/4p – 1 – 4s/4p – 1 – 4s/4p – 1 – Finish

W

Course: Windward Finish

Signal	Mark Rounding Order
W2	Start – 1 – 4s/4p – Finish
W3	Start – 1 – 4s/4p – 1 – 4s/4p – Finish
W4	Start – 1 – 4s/4p – 1 – 4s/4p – 1 – 4s/4p – Finish

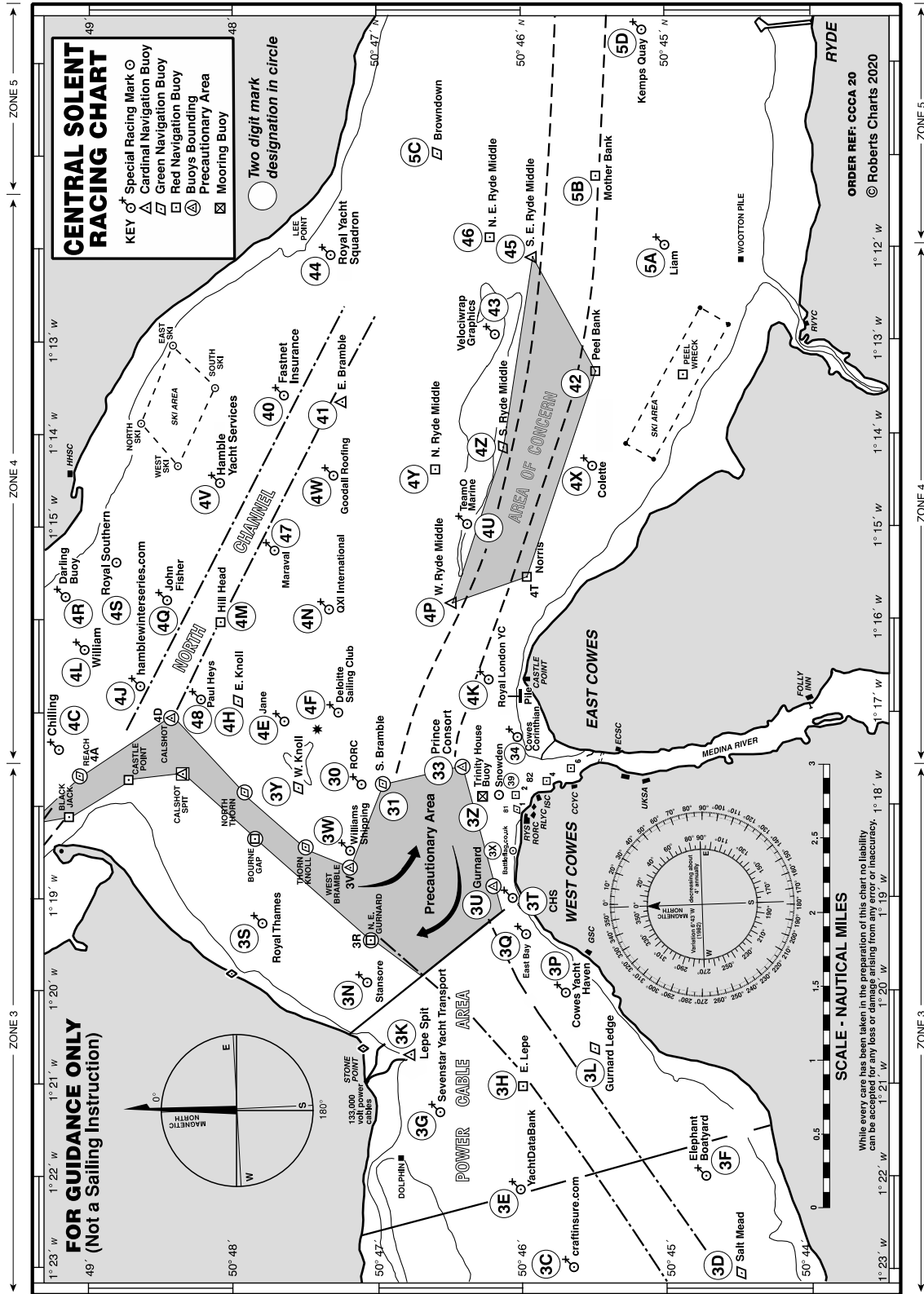
LA / WA

Course: Windward/leeward with offset mark 1a

Signal	Mark Rounding Order
LA2	Start – 1 – 1a – 4s/4p – 1 – 1a – Finish
LA3	Start – 1 – 1a – 4s/4p – 1 – 1a – 4s/4p – 1 – 1a – Finish
LA4	Start – 1 – 1a – 4s/4p – 1 – 1a – 4s/4p – 1 – 1a – 4s/4p – 1 – 1a – Finish
WA2	Start – 1 – 1a – 4s/4p – Finish
WA3	Start – 1 – 1a – 4s/4p – 1 – 1a – 4s/4p – Finish
WA4	Start – 1 – 1a – 4s/4p – 1 – 1a – 4s/4p – 1 – 1a – 4s/4p – Finish

ADDENDUM B

- Solent Chartlets and Two Character Solent Mark Codes



ADDENDUM C

We have set up an official WhatsApp group for receiving general information from the Race Office. To join the WhatsApp group please use the below QR Code:

P40 Nationals

WhatsApp group



Instructions on using QR codes:

- For Apple phones: Please open your camera app and point it at the QR code and then follow the link it displays on your screen.
- For Android phones: Please obtain a barcode scanning app from the Google Play Store such as "Barcode Scanner", open the barcode scanning app and point it at the QR code and then follow the link it displays on your screen.