



## ROYAL YACHT SQUADRON J70 SOLENT CHAMPIONSHIPS

7 – 8 NOVEMBER 2020  
COWES

ORGANISING AUTHORITY:  
ROYAL YACHT SQUADRON

# SAILING INSTRUCTIONS

*The notation '[DP]' in a rule in the Sailing Instructions means that the penalty for a breach of that rule may, at the discretion of the Protest Committee, be less than disqualification.*

## 1. RULES

- 1.1 Racing will be governed by:
  - 1.1 The rules as defined in The Racing Rules of Sailing (RRS) 2017-2020.
  - 1.2 The National Authority ([RYA Prescriptions](#)).
  - 1.3 The J70 Class Rules.
  - 1.4 The crew for each boat shall not exceed 4 persons. This changes J/70 Class rule C.3.1(a).
  - 1.5 Notices to Mariners for the Ports of [Southampton](#), [Portsmouth](#) and [Cowes](#). [DP]
  - 1.6 All crews are required to follow all the latest Covid-19 guidance from NHS England and the Government.
  - 1.2 All crews should also follow the latest [RYA Guidance on sailing & racing with participants from different households](#) during COVID-19 in England.
  - 1.3 The skipper of each boat shall complete and submit an online [Covid 19 Declaration Form](#) in the 24 hours immediately prior to the event. Competitors who answer 'False' to any of the questions shall not take part in the event.
  - 1.4 To assist "Track and Trace" skippers shall update the Covid 19 Declaration Form if crew details change (substitutions etc).

## 2. NOTICES TO COMPETITORS

- 2.1 The Race Office will be located in the Royal Yacht Squadron (RYS) and the Official Notice Board (ONB) will be online at: [www.rys.org.uk](http://www.rys.org.uk).

## 3. CHANGES TO SAILING INSTRUCTIONS

- 3.1 Any change to the Sailing Instructions (SIs) made ashore will be posted by 0900 on the day it will take effect, except that

any change to the schedule of races will be posted by 2000 on the day before it will take effect.

## 4. SIGNALS MADE ASHORE

- 4.1 Signals made ashore will be displayed at the RYS Flagstaff and/or RYS Lodge Flagstaff.
- 4.2 Flag 'AP' over 'AP' with two sound signals means all racing is postponed and crews are advised not to go afloat. The first warning signal will be made not less than 50 minutes after the removal of AP over AP, at a time that will be announced on VHF Channel 05. The removal of this signal with one sound signal may be followed by a single 'AP'. This adds to RRS 27.3 and Race Signals.

## 5. SIGNALS MADE AFLOAT

- 5.1 To alert boats that a race or sequence of races will begin soon, an orange flag will be displayed on the Committee Vessel with multiple sound signals five minutes before a warning signal is displayed.

## 6. SCHEDULE

- 6.1 The Schedule of Racing is shown in the table below. Saturday times are UTC (Greenwich Mean Time).
- 6.2 The Race Committee intends to run Seven (7) races as shown in the table below but may alter the schedule of races to cater for adverse weather conditions.
- 6.3 The Daily Briefing by the Race Officer will be conducted using VHF Radio to allow for boats sailing from various berthing locations. The VHF Channel to be used will be **VHF Channel 05**.
- 6.4 Schedule.

Date	Event	Time
Sat 7 November HWP 1520 - 4.1m(GMT)	Race 1	1025 1 <sup>st</sup> Warning Signal
	Race 2	Warning Signal ASAP after Race 1
	Race 3	Warning Signal ASAP after Race 2
	Race 4	Warning Signal ASAP after Race 3
Sun 8 November HWP 1630 – 3.9m (BST)	Race 5	1025 1 <sup>st</sup> Warning Signal
	Race 6	Warning Signal ASAP after Race 5
	Race 7	Warning Signal ASAP after Race 6 and no later than 1500
	Prizegiving	ASAP in RYS after Racing

## 7. CLASS FLAGS

- 7.1 The class flag is shown below.

J70 Class Flag	ICOS Flag J.	
----------------	--------------	--

**8. RACING AREA**

- 8.1 The racing area for all races will be the Solent and its approaches.
- 8.2 Racing will take place from a Committee Vessel.
- 8.3 The approximate position of the Committee Vessel and starting area will be announced with the time check at 0930 on Marine Band International VHF Channel 05. The position of the Committee Vessel will also be announced on the Regatta WhatsApp Group. See QR code in Addendum C.

**9. COURSES**

- 9.1 The format for racing will be windward/leeward.
- 9.2 Course letters and number of laps for windward leeward courses will be shown on the Committee Vessel.
- 9.3 The diagrams in Addendum A of these Sailing Instructions show the courses, including the approximate angles between legs, the order in which the marks are to be passed, and the side on which each mark is to be left.
- 9.4 No later than the Warning Signal, the Race Committee Vessel will display the approximate compass bearing of the first leg and the course to be sailed.

**10. MARKS**

- 10.1 With reference to Addendum A, marks 1, 1a, 4s & 4p will be orange inflatable marks.
- 10.2 With reference to gate marks 4p/4s, if only one gate mark is in position, that mark shall be rounded to port.
- 10.3 The starting marks will be a committee vessel and a black inflatable mark.
- 10.4 The finishing marks will be a committee vessel and a black inflatable mark.
- 10.5 When a new mark has been laid to change the next leg of a course it will be a black inflatable mark. If the new mark is a windward mark, then the offset mark 1a will not be laid and is no longer part of the course.

**11. NAVIGATION RESTRICTIONS**

- 11.1 Boats shall not anchor or kedge in the Cowes Harbour fairway.
- 11.2 All boats shall comply with [Associated British Ports Notice to Mariners No 14 of 2019](#) giving details of a Precautionary Area (Thorn Channel) and Moving Prohibited Zone (MPZ). The MPZ shall rank as an obstruction for the purposes of RRS 19 and 20.
- 11.3 Whilst racing, boats shall pass to the north of the Cowes Breakwater.

**12. THE START**

- 12.1 The starting line will be between a staff displaying an orange flag on the Committee Vessel at the starboard end and the course side of the port-end starting mark.
- 12.2 A boat starting later than 5 minutes after her starting signal will be scored DNS without a hearing. This changes RRS A4 and A5.
- 12.3 The initial preparatory signal is expected to be the U Flag - see RRS 30.3.

**13. RECALLS**

- 13.1 The Race Committee may broadcast the sail numbers of individually recalled boats on VHF CH 05 after Flag X has been displayed, but not sooner than 30 seconds after the start. Delay or failure to do so is not grounds for redress.

**14. CHANGE OF THE NEXT LEG OF THE COURSE**

- 14.1 To change the next leg of the course, the Race Committee will move the original mark (or the finishing line) to a new position.
- 14.2 The position of any mark(s) may be adjusted by up to plus or minus 10 degrees relative to previous location and up to approximately 200 metres to windward or leeward without signalling Flag C, a direction signal, a length signal or a sound signal. This changes RRS 33.

**15. THE FINISH**

- 15.1 The finish line will be between a staff displaying a blue flag on a Committee Vessel and the course side of the finish mark.

**16. PENALTY SYSTEM**

- 16.1 RRS 44.1 is changed so that the Two-Turns penalty is replaced by the One-Turn Penalty.

**17. TIME LIMITS**

- 17.1 The target time for a race is 50-60 minutes. Failure to reach the target time will not be grounds for redress. This changes RRS 62.1(a).
- 17.2 The following time limits will apply.
  - (a) Mark 1 Time Limit. The time limit for the first boat to pass Mark 1 is 30 minutes.
  - (b) Race Time Limit. The time limit for the first boat to sail the course and finish is 70 minutes.
  - (c) Finishing Window. The time limit for boats to finish after the first boat sails the course and finishes is 30 minutes.
- 17.3 If no boat has passed Mark 1 within the Mark 1 Time Limit, or if no boat has finished within the Race Time Limit, the race shall be abandoned.
- 17.4 Boats failing to finish within the Finishing Window shall be scored Did Not Finish without a hearing. This changes RRS 35, A4 and A5.

**18. PROTESTS AND REQUESTS FOR REDRESS**

- 18.1 Protest forms will be available at the Race Office. Protest and requests for redress or reopening shall be delivered to the Race Office within the protest time limit. Contact mobile phone numbers should be included on the protest form.
- 18.2 The protest limit is 90 minutes after the last boat has finished the last race of the day or the Race Committee signals no more racing today, whichever is later.
- 18.3 Notices will be posted no later than 30 minutes after the protest time limit to inform competitors of the hearings in which they are parties or named as witnesses. Hearings will be held in the protest room located at the RYS.

- 18.4 Notices of Protests by the Race Committee, Technical Committee or Protest Committee will be posted to inform boats under RRS 61.1(B).
- 18.5 On the last scheduled day of racing a request for redress based on a protest committee decision shall be delivered no later than 30 minutes after the decision was posted. This changes RRS 62.2.

## 19. SCORING

- 19.1 Low points scoring system will apply.
- 19.2 An overall points series will be run, and prizes will be awarded to the first three boats.
- 19.3 One (1) completed race is required to constitute a series.
- 19.4 When one to four (1-4) races are completed a boats series score will be the total of her race scores. When five (5) or more races are completed a boat's series score shall be the total of her race scores excluding her worst score.

## 20. SAFETY REGULATIONS

- 20.1 A boat that retires from a race shall notify the Race Committee as soon as possible on VHF CH 77 or by hailing a race committee vessel. *[DP]*

## 21. REPLACEMENT OF CREW OR EQUIPMENT

- 21.1 Substitution of competitors will not be allowed without prior written approval of the Race Committee and are at the discretion of the Race Committee. Requests for substitution shall be made in writing to the Race Committee at the first reasonable opportunity. *[DP]*
- 21.2 Substitution of damaged or lost equipment will not be allowed unless authorized by the Race Committee. Requests for substitution shall be made in writing to the committee at the first reasonable opportunity. *[DP]*

## 22. EQUIPMENT AND MEASUREMENT CHECKS

- 22.1 A boat or equipment may be inspected at any time for compliance with the Class Rules and SIs.
- 22.2 On the water, a boat may be instructed by the Race Committee to proceed immediately to a designated area for inspection.

## 23. SUPPORT VESSELS *[DP]*

- 23.1 Support vessels must be on call on VHF channel 77 at all times during racing. They are expected to render assistance to any boat in danger when requested by the boat, or at the request of the Race Committee.
- 23.2 Except when complying with SI 23.1, support vessels and personnel shall stay 100 metres outside the course area from the time of the first Warning Signal until all boats have finished racing. The course area is the area inside an imaginary line drawn 100 metres outside any area where a boat might sail whilst racing.
- 23.3 A boat shall receive no outside assistance from support vessels or support persons or otherwise once she has left the dock for the day until the finish of the last race of the day, except in the case of emergency. For the avoidance of doubt, outside assistance includes verbal communication and the transfer of physical items.

## 24. TRASH DISPOSAL

- 24.1 Trash may be placed aboard support or official boats.

## 25. HAUL OUT RESTRICTIONS

- 25.1 Boats shall not be hauled out during the regatta except with and according to the terms of prior written permission of the Race Committee. *[DP]*

## 26. DIVING EQUIPMENT AND PLASTIC POOLS

- 26.1 Underwater breathing apparatus and plastic pools or their equivalent shall not be used around competing boats between the preparatory signal of the first race and the end of the Regatta. *[DP]*

## 27. RADIO COMMUNICATION

- 27.1 The Race Committee intends to broadcast information available to all competitors by radio on VHF Channel 05, including starting and safety information. Boats shall not transmit on **VHF Channel 05**.
- 27.2 Competitors wishing to communicate with the Race Committee shall do so on **VHF Channel 77**.
- 27.3 Except in an emergency or when initiated or approved by the Race Committee, a yacht that is racing shall neither make nor receive voice or data transmissions that would constitute outside assistance *[DP]*
- 27.4 The Race Committee may also use a "Whats App" group to communicate with Competitors and a "QR code" in Addendum C of these Sis is available with details of how to join. Failure to receive information broadcast using "Whats App" will not be grounds for redress.

## 28. PRIZES

- 28.1 An overall points series will be run, and prizes will be awarded to the first three boats.

## 29. RISK STATEMENT

- 29.1 Rule 4 of the Racing Rules of Sailing states: "The responsibility for a boat's decision to participate in a race or to continue racing is hers alone."
- 29.2 Sailing is by its nature an unpredictable sport and therefore involves an element of risk. By taking part in the event, each competitor agrees and acknowledges that:
- They are aware of the inherent element of risk involved in the sport and accept responsibility for the exposure of themselves, their crew and their boat to such inherent risk whilst taking part in the event;
  - They are responsible for the safety of themselves, their crew, their boat and their other property whether afloat or ashore;
  - They accept responsibility for any injury, damage or loss to the extent caused by their own actions or omissions;
  - Their boat is in good order, equipped to sail in the event and they are fit to participate;
  - The provision of a race management team, patrol boats, and other officials and volunteers by the event

organiser does not relieve them of their own responsibilities;

- (f) The provision of patrol boat cover is limited to such assistance, particularly in extreme weather conditions, as can be practically provided in the circumstances;
- (g) It is their responsibility to familiarise themselves with any risks specific to this venue or this event drawn to their attention in any rules and information produced for the venue or event and to attend any safety briefing held for the event; <sup>[1]</sup><sub>[SEP]</sub>
- (h) They are responsible for ensuring that their boat is equipped and seaworthy so as to be able to face extremes of weather; that there is a crew sufficient in number, experience and fitness to withstand such weather; and that the safety equipment is properly maintained, stowed and in date and is familiar to the crew.

### 29.3 COVID Statement

- (a) By taking part in any of the events covered by this Sailing Instructions, each competitor agrees and acknowledges that they are responsible for complying

with any regulations in force from time to time in respect of COVID-19 and for complying with the Royal Yacht Squadron COVID-19 procedures.

- (b) The penalty for a breach of this rule may, at the discretion of the Protest Committee, be less than disqualification. Boats may not protest for breaches of this rule. This changes rule 60.1(a). *(DP)*

## 30. INSURANCE

- 30.1 All entrants shall be covered by a minimum Third-Party Liability indemnity of £3 million and declare that such cover will be maintained in full force throughout the event.

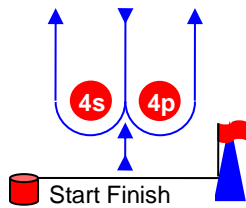
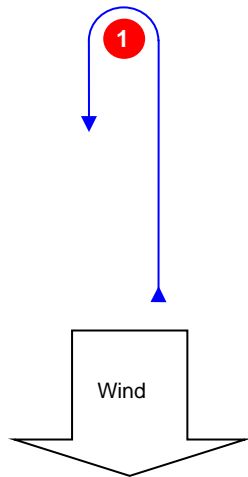
## 31. FURTHER INFORMATION

- 31.1 Further information including social arrangements will be available on the RYS website when available.

**ADDENDUM A**

**Course Illustrations – Windward Leeward**

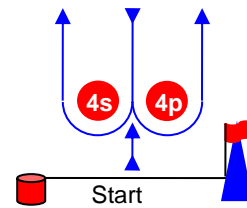
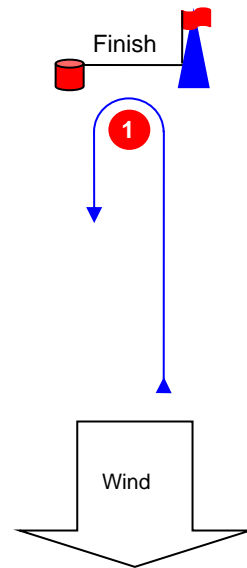
**L**



**Course: Leeward finish**

Signal	Mark Rounding Order
<b>L2</b>	Start – 1 – 4s/4p – 1 – Finish
<b>L3</b>	Start – 1 – 4s/4p – 1 – 4s/4p – 1 – Finish
<b>L4</b>	Start – 1 – 4s/4p – 1 – 4s/4p – 1 – 4s/4p – 1 – Finish

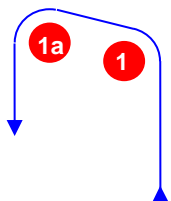
**W**



**Course: Windward Finish**

Signal	Mark Rounding Order
<b>W2</b>	Start – 1 – 4s/4p – Finish
<b>W3</b>	Start – 1 – 4s/4p – 1 – 4s/4p – Finish
<b>W4</b>	Start – 1 – 4s/4p – 1 – 4s/4p – 1 – 4s/4p – Finish

**LA / WA**

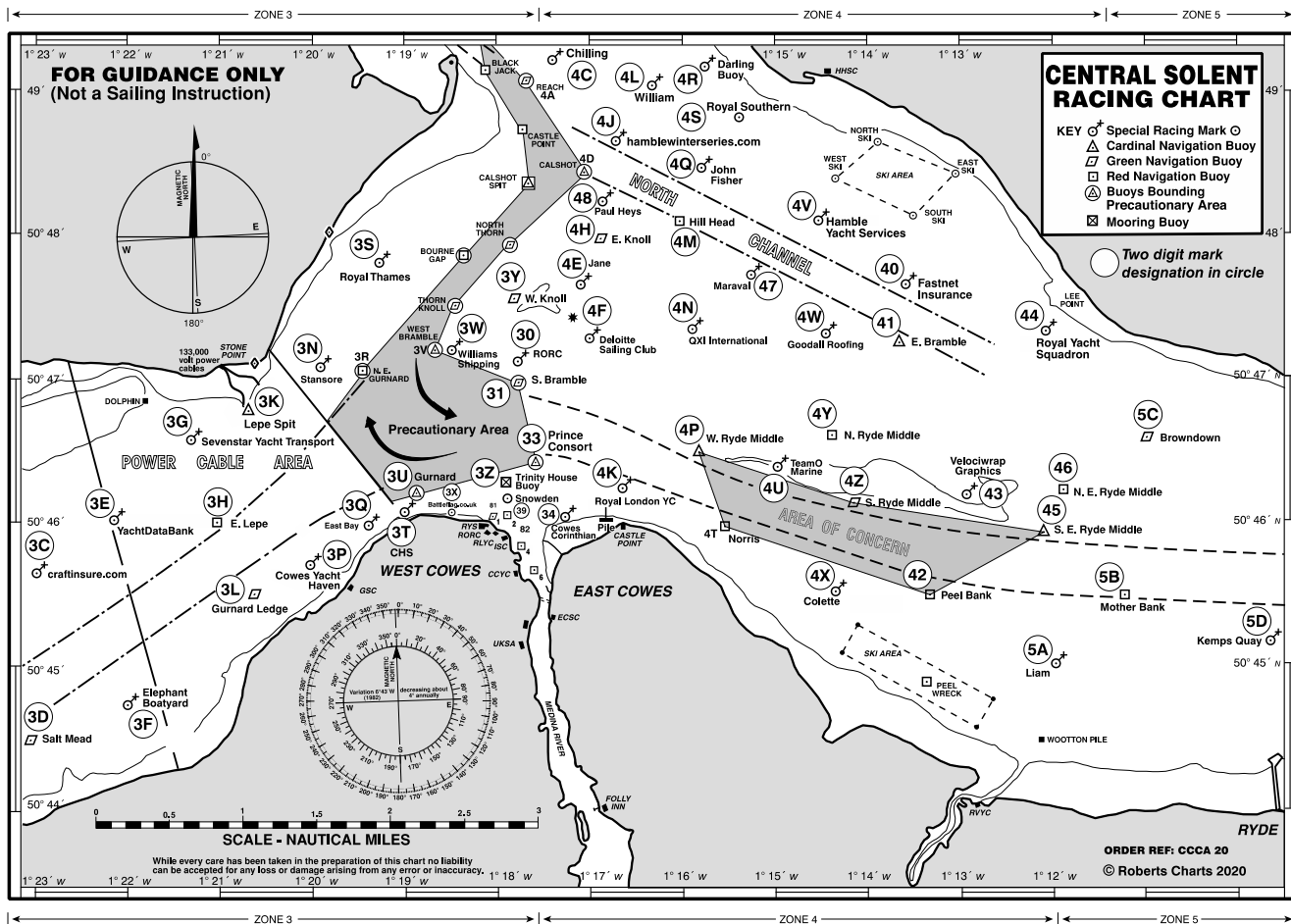


**Course: Windward/leeward with offset mark 1a**

Signal	Mark Rounding Order
<b>LA2</b>	Start – 1 – 1a – 4s/4p – 1 – 1a – Finish
<b>LA3</b>	Start – 1 – 1a – 4s/4p – 1 – 1a – 4s/4p – 1 – 1a – Finish
<b>LA4</b>	Start – 1 – 1a – 4s/4p – 1 – 1a – 4s/4p – 1 – 1a – 4s/4p – 1 – 1a – Finish
<b>WA2</b>	Start – 1 – 1a – 4s/4p – Finish
<b>WA3</b>	Start – 1 – 1a – 4s/4p – 1 – 1a – 4s/4p – Finish
<b>WA4</b>	Start – 1 – 1a – 4s/4p – 1 – 1a – 4s/4p – 1 – 1a – 4s/4p – Finish

**ADDENDUM B**

**Central Solent Racing Chart 2020**



## ADDENDUM C

We have set up an official WhatsApp group for receiving general information from the Race Office. To join the WhatsApp group please use the below QR Code:

# J70 Solent Championships

WhatsApp group



### Instructions on using QR codes:

- For Apple phones: Please open your camera app and point it at the QR code and then follow the link it displays on your screen.
- For Android phones: Please obtain a barcode scanning app from the Google Play Store such as "Barcode Scanner", open the barcode scanning app and point it at the QR code and then follow the link it displays on your screen.