



**ROYAL YACHT SQUADRON
J70 SOLENT CHAMPIONSHIPS**

**26 – 27 OCTOBER 2019
COWES**

**ORGANISING AUTHORITY:
ROYAL YACHT SQUADRON**

SAILING INSTRUCTIONS

The notation '[DP]' in a rule in the Sailing Instructions means that the penalty for a breach of that rule may, at the discretion of the Protest Committee, be less than disqualification.

1. RULES

Racing will be governed by:

- 1.1 The rules as defined in The Racing Rules of Sailing (RRS) 2017-2020.
- 1.2 The National Authority (RYA) Prescriptions.
- 1.3 The J70 Class Rules.
- 1.4 The byelaws for the Port of Southampton, Portsmouth Harbour and Cowes Harbour.

2. NOTICES TO COMPETITORS

- 2.1 The Race Office and Official Notice Board (ONB) will be located in the Royal Yacht Squadron (RYS).

3. CHANGES TO SAILING INSTRUCTIONS

- 3.1 Any change to the Sailing Instructions (SIs) made ashore will be posted by 0900 on the day it will take effect, except that any change to the schedule of races will be posted by 2000 on the day before it will take effect.

4. SIGNALS MADE ASHORE

- 4.1 Signals made ashore will be displayed at the RYS Flagstaff and/or RYS Lodge Flagstaff.
- 4.2 Flag 'AP' over 'AP' with two sound signals means all racing is postponed and crews are advised not to go afloat. The first warning signal will be made not less than 50 minutes after the removal of AP over AP, at a time that will be announced on VHF Channel 05. The removal of this signal with one sound signal may be followed by a single 'AP'. This adds to RRS 27.3 and Race Signals.

5. SIGNALS MADE AFLOAT

- 5.1 To alert boats that a race or sequence of races will begin soon, an orange flag will be displayed on the Committee Vessel with multiple sound signals five minutes before a warning signal is displayed.


6. SCHEDULE

- 6.1 The Schedule of Racing is shown in the table below. Saturday times are UTC plus 1 hour (British Summer Time). Sunday times are UTC.
- 6.2 The Race Committee intends to run Seven (7) races as shown in the table below but may alter the schedule of races to cater for adverse weather conditions.
- 6.3 The Daily Briefing by the Race Officer will be conducted using VHF Radio to allow for boats sailing from various berthing locations. The VHF Channel to be used will be **VHF Channel 05**.
- 6.4 Schedule.

Date	Event	Time
Sat 26 October HWP 1040 - 4.8m(BST)	Race 1	1025 1 st Warning Signal
	Race 2	Warning Signal ASAP after Race 1
	Race 3	Warning Signal ASAP after Race 2
	Race 4	Warning Signal ASAP after Race 3
	Evening Social	1900 in the Royal Yacht Squadron Pavilion. (dress code – crew uniform/yachting)
Sun 27 October HWP 1022 - 5.0m (UT)	Race 5	1025 1 st Warning Signal
	Race 6	Warning Signal ASAP after Race 5
	Race 7	Warning Signal ASAP after Race 6 and no later than 1500
	Prizegiving	ASAP in RYS after Racing

7. CLASS FLAGS

- 7.1 The class flag is shown below.

J70 Class Flag	ICOS Flag J. 
----------------	--

8. RACING AREA

- 8.1 The racing area for all races will be the Solent and its approaches.
- 8.2 Racing will take place from a Committee Vessel.
- 8.3 The approximate position of the Committee Vessel and starting area will be announced with the time check at 0930 on Marine Band International VHF Channel 05.

9. COURSES

- 9.1 The course will be in accordance with Addendum C of these Sailing Instructions.

10. MARKS

- 10.1 With reference to Addendum C, marks 1, 1a, 4s & 4p will be orange inflatable marks.
- 10.2 The starboard end starting mark will be a Committee Vessel displaying an orange flag. The port end starting mark will be and an orange inflatable mark.
- 10.3 An orange inflatable mark may also be laid as an inner distance mark (IDM) near the start line Committee Vessel.
- 10.4 Any IDM that is laid shall rank as a starting mark.
- 10.5 The finishing marks will be a committee vessel displaying a Blue Flag and an orange inflatable mark.

11. NAVIGATION RESTRICTIONS

- 11.1 Boats shall not anchor or kedge in the Cowes Harbour fairway or within the area denoting power cables and gas pipes between Stone Point and Gurnard Bay, as shown on Admiralty Chart 2040. See Addendum D.
- 11.2 All boats shall comply with Associated British Ports Notice to Mariners No 14 of 2019 giving details of a Port of Southampton – Precautionary Area (Thorn Channel) and Moving Prohibited Zone (MPZ). The MPZ shall rank as an obstruction for the purposes of RRS 19 and 20. http://www.southamptonvts.co.uk/Yachting_and_Leisure/Notices_to_Mariners/.
- 11.3 Whilst racing, boats shall pass to the north of the Cowes Breakwater.

12. THE START

- 12.1 The starting line will be between a staff displaying an orange flag on the Committee Vessel at the starboard end and the course side of the port-end starting mark.
- 12.2 A boat starting later than 5 minutes after her starting signal will be scored DNS without a hearing. This changes RRS A4 and A5.

13. RECALLS

- 13.1 The Race Committee may broadcast the sail numbers of individually recalled boats on VHF CH 05 after Flag X has been displayed, but not sooner than 30 seconds after the start. Delay or failure to do so is not grounds for redress.
- 13.2 When a race started under RRS 30.4 (Black Flag rule) is recalled or abandoned, the sail numbers of disqualified boats will be displayed on a blackboard on the committee vessel, with multiple sound signals, for at least three minutes. The sail numbers of disqualified boats will also be broadcast on VHF CH 05. This changes RRS 30.4.

14. CHANGE OF THE NEXT LEG OF THE COURSE

- 14.1 To change the next leg of the course, the Race Committee will move the original mark (or the finishing line) to a new position.
- 14.2 The position of any mark(s) may be adjusted by up to plus or minus 10 degrees relative to previous location and up to

approximately 200 metres to windward or leeward without signalling Flag C, a direction signal, a length signal or a sound signal. This changes RRS 33.

15. THE FINISH

- 15.1 The finish line will be between a staff displaying a blue flag on a Committee Vessel and the course side of the finish mark.

16. PENALTY SYSTEM

- 16.1 RRS 44.1 is changed so that the Two-Turns penalty is replaced by the One-Turn Penalty.

17. TIME LIMITS

- 17.1 The target time for a race is 50-60 minutes. Failure to reach the target time will not be grounds for redress. This changes RRS 62.1(a).
- 17.2 The following time limits, will apply.
- (a) Mark 1 Time Limit. The time limit for the first boat to pass Mark 1 is 30 minutes.
 - (b) Race Time Limit. The time limit for the first boat to sail the course and finish is 70 minutes.
 - (c) Finishing Window. The time limit for boats to finish after the first boat sails the course and finishes is 30 minutes.
- 17.3 If no boat has passed Mark 1 within the Mark 1 Time Limit, or if no boat has finished within the Race Time Limit, the race shall be abandoned.
- 17.4 Boats failing to finish within the Finishing Window shall be scored Did Not Finish without a hearing. This changes RRS 35, A4 and A5.

18. PROTESTS AND REQUESTS FOR REDRESS

- 18.1 A boat intending to protest shall inform the race committee finish vessel immediately after finishing. If the protestor does not finish the race he shall promptly inform the Race Committee Vessel as soon as possible or the Race Officer immediately after arriving ashore.
- 18.2 Protest forms are available at the Race Office. Protest and requests for redress or reopening shall be delivered to the Race Office within the protest time limit. Contact mobile phone numbers shall be included on the protest form.
- 18.3 The protest time limit is 90 minutes after the last boat has finished the last race of the day or the Race Committee signals no more racing today, whichever is later.
- 18.4 Notices will be posted no later than 30 minutes after the protest time limit to inform competitors of the hearings in which they are parties or named as witnesses. Hearings will be held in the protest room located at the RYS.
- 18.5 On the last scheduled day of racing a request for redress based on a protest committee decision shall be delivered no later than 30 minutes after the decision was posted. This changes RRS 62.2.

19. SCORING

- 19.1 Low points scoring system will apply.
- 19.2 One completed races is required to constitute a series.

19.3 When one to four (1-4) races are completed a boats series score will be the total of her race scores. When five (5) or more races are completed a boat's series score shall be the total of her race scores excluding her worst score.

20. SAFETY REGULATIONS

20.1 A boat that retires from a race shall notify the Race Committee as soon as possible on VHF CH 77 or by hailing a race committee vessel. *[DP]*

21. REPLACEMENT OF CREW OR EQUIPMENT

21.1 Substitution of competitors will not be allowed without prior written approval of the Race Committee and are at the discretion of the Race Committee. Requests for substitution shall be made in writing to the Race Committee at the first reasonable opportunity. *[DP]*

21.2 Substitution of damaged or lost equipment will not be allowed unless authorized by the Race Committee. Requests for substitution shall be made in writing to the committee at the first reasonable opportunity. *[DP]*

22. EQUIPMENT AND MEASUREMENT CHECKS

22.1 A boat or equipment may be inspected at any time for compliance with the Class Rules and SIs.

22.2 On the water, a boat may be instructed by the Race Committee to proceed immediately to a designated area for inspection.

23. SUPPORT VESSELS *[DP]*

23.1 Support vessels must be on call on VHF channel 77 at all times during racing. They are expected to render assistance to any boat in danger when requested by the boat, or at the request of the Race Committee.

23.2 Except when complying with SI 23.1, support vessels and personnel shall stay 100 metres outside the course area from the time of the first Warning Signal until all boats have finished racing. The course area is the area inside an imaginary line drawn 100 metres outside any area where a boat might sail whilst racing.

23.3 A boat shall receive no outside assistance from support vessels or support persons or otherwise once she has left the dock for the day until the finish of the last race of the day, except in the case of emergency. For the avoidance of doubt, outside assistance includes verbal communication and the transfer of physical items.

24. TRASH DISPOSAL

24.1 Trash may be placed aboard support or official boats.

25. HAUL OUT RESTRICTIONS

25.1 Boats shall not be hauled out during the regatta except with and according to the terms of prior written permission of the Race Committee. *[DP]*

26. DIVING EQUIPMENT AND PLASTIC POOLS

26.1 Underwater breathing apparatus and plastic pools or their equivalent shall not be used around competing boats

between the preparatory signal of the first race and the end of the Regatta. *[DP]*

27. RADIO COMMUNICATION

27.1 The Race Committee intends to broadcast information available to all competitors by radio on VHF Channel 05, including starting and safety information. Boats shall not transmit on VHF Channel 05.

27.2 Competitors wishing to communicate with the Race Committee shall do so on VHF Channel 77.

27.3 Except in an emergency or when initiated or approved by the Race Committee, a yacht that is racing shall neither make nor receive voice or data transmissions that would constitute outside assistance *[DP]*

27.4 *The Race Committee may also use a "Whats App" group to communicate with Competitors and a "QR code" will be provided on the RYS J70 Solent Championships Website page with details of how to join. Failure to receive information broadcast using "Whats App" will not be grounds for redress.*

28. PRIZES

28.1 An overall points series will be run and prizes will be awarded to the first three boats.

29. RISK STATEMENT

29.1 Rule 4 of the Racing Rules of Sailing states: "The responsibility for a boat's decision to participate in a race or to continue racing is hers alone."

29.2 Sailing is by its nature an unpredictable sport and therefore involves an element of risk. By taking part in the event, each competitor agrees and acknowledges that:

- (a) They are aware of the inherent element of risk involved in the sport and accept responsibility for the exposure of themselves, their crew and their boat to such inherent risk whilst taking part in the event;
- (b) They are responsible for the safety of themselves, their crew, their boat and their other property whether afloat or ashore;
- (c) They accept responsibility for any injury, damage or loss to the extent caused by their own actions or omissions;
- (d) Their boat is in good order, equipped to sail in the event and they are fit to participate;
- (e) The provision of a race management team, patrol boats, and other officials and volunteers by the event organiser does not relieve them of their own responsibilities;
- (f) The provision of patrol boat cover is limited to such assistance, particularly in extreme weather conditions, as can be practically provided in the circumstances;
- (g) It is their responsibility to familiarise themselves with any risks specific to this venue or this event drawn to their attention in any rules and information produced for the venue or event and to attend any safety briefing held for the event;
- (h) They are responsible for ensuring that their boat is equipped and seaworthy so as to be able to face extremes of weather; that there is a crew sufficient in

number, experience and fitness to withstand such weather; and that the safety equipment is properly maintained, stowed and in date and is familiar to the crew.

30. INSURANCE

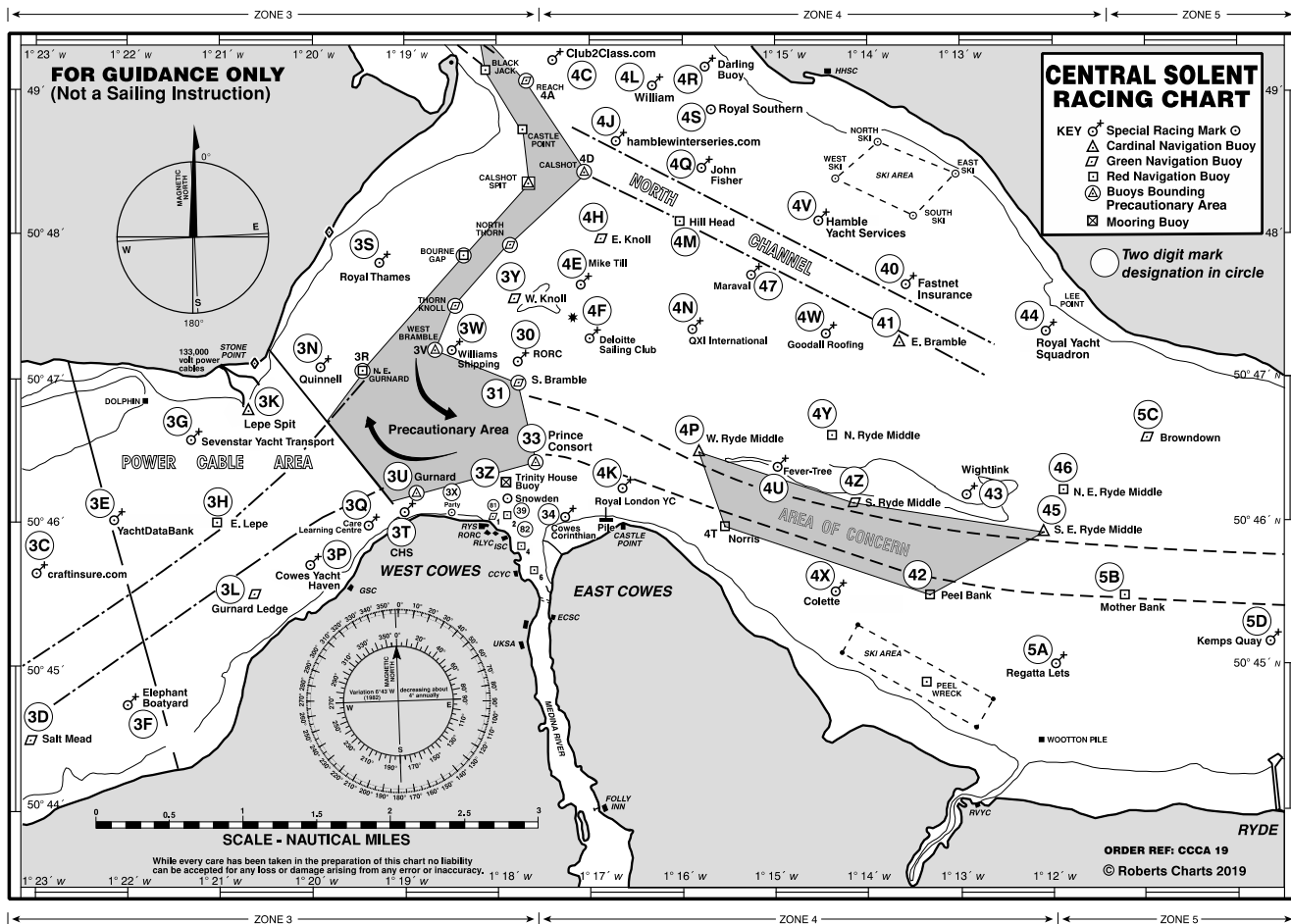
30.1 All entrants shall be covered by a minimum Third Party Liability indemnity of £3 million and declare that such cover will be maintained in full force throughout the event.

31. FURTHER INFORMATION

31.1 Further information including social arrangements will be available on the RYS website when available.

ADDENDUM A

Central Solent Racing Chart 2019



ADDENDUM B**RYA PRESCRIPTIONS**

With effect from 1 January 2017, the RYA prescribes

Rule**3 Acceptance of the Rules**

Add new rule 3.6: 'Each competitor and boat owner shall ensure that their support persons comply with the rules.'

5 Anti-Doping

The national authority procedural rules required by World Sailing regulation 21.16 to implement the World Anti-Doping Code through World Sailing Regulation 21 are the **RYA Anti-Doping Rules**, as published on the RYA website.

40 Personal Flotation Devices

When a rule requires a personal flotation device to be worn, the device shall comply with the specifications for the personal flotation devices that the boat is required to carry. If more than one specification applies, the personal flotation device worn shall comply with the highest of them.

50.4 Headsails

For the purposes of rules 50 and 54 and Appendix G, the difference between a headsail and a spinnaker is that, for a headsail, the distance measured between its **half leech point** and its **half luff point**, is less than 75% of its **foot length**. A sail tacked down behind the **foremost mast** is not a headsail.

Terms in **bold** are as defined in the Equipment Rules of Sailing.

67 Damages

1. Any issue of liability or claim for damages arising from an incident while a boat is bound by The Racing Rules of Sailing shall be subject to the jurisdiction of the courts and not considered by a protest committee.
2. A boat that takes a penalty or retires does not thereby admit liability for damages or that she has broken a rule.

70.5 Right of Appeal

1. RYA approval is not required to deny the right of appeal under rule 70.5(a).
2. The RYA will not consider approving the denial of the right of appeal under rule 70.5(b) unless
 - (a) the event is open only to boats entered by an organization affiliated to the RYA, a member of such an organization or a personal member of the RYA;
 - (b) the RYA decides there is good reason to approve; the cost of an international jury which would otherwise be appropriate for the event is not a good reason;
 - (c) the protest committee is approved by the RYA; and
 - (d) application to the RYA is made no later than one month before the notice of race is to be issued. In exceptional circumstances, the RYA may consider a later application.

A copy of the RYA letter of approval shall be displayed on the official notice board.

However, the denial of appeal shall not apply to a party to a hearing under rule 69.2, Misconduct, but the decision of the protest committee shall determine the results of the event.

78 Compliance with Class Rules; Certificates

A race committee or technical committee may inspect or measure any **boat** or **personal equipment**, at any time.

86.3 Rule Changes

An organizing authority wishing to develop or test alternative racing rules shall obtain prior approval from the RYA. An application form is available from the RYA. The notice of race shall include the approved alternative rules. The organizing authority shall promptly report the results of the development or test to the RYA.

88.2 Changes to National Authority Prescriptions

Notices of race and sailing instructions shall not change a prescription of the RYA. However, when an international jury has been appointed for an event, only the prescriptions to rules 3, 5, 67, 86.3 and 88.2 shall apply.

APPENDIX G IDENTIFICATION ON SAILS**G1 Identification, Specifications, Positioning**

The requirements of rules G1.1, G1.2 and G1.3 apply to all British owned boats except that:

1. under rule G1.1(a), class insignia need not be carried when the boat carries a sail number from one of the series specified in prescription G2-1, G2-2, G2-3 or G2-4 below.
2. under rule G1.1(c), a sail number of more than four digits may be carried.
3. under rule G1.1(c), for boats other than World Sailing classes, one of the authorities specified in G2 below shall allot an appropriate sail number.
4. under rule G1.2(b), the height of a letter included as part of a sail number shall be the same as any numerals included in the sail number.
5. under rule G1.3(c), the national letters may be placed in front of or above the sail numbers.

G2 Series of Sail Numbers and Issuing Authorities Approved by the RYA

1. Y, M, N, T, A, L and X series issued by the RYA.
2. R series issued by the Royal Ocean Racing Club.
3. C series issued by the Clyde Yacht Clubs Association.
4. National class series issued by the RYA.
5. Series issued by RYA affiliated class associations and approved by the RYA.
6. Series issued by a builder of a new class and approved by the RYA.

APPENDIX R PROCEDURES FOR APPEALS AND REQUESTS**R2.1 Submission of Appeal**

Rule R2.1 shall apply except as changed by the following:

1. The appellant shall notify RYA Racing stating an intention to appeal within the relevant time limit in rule R2.1. No details are needed at this stage.
2. Within 15 days thereafter, the appellant shall send to the RYA a completed appeal form with a copy of the protest committee's decision and other documents listed in rule R2.2, all as far as reasonably possible.
3. Unless the appellant is a personal member of the RYA, an appeal fee, stated on the appeal form, is payable to the RYA and shall be sent with the appeal form.

The appeal form is available from www.rya.org.uk/racingrules or by request to RYA Racing.

R2.4 Failure to Comply with Procedures for Appeal or Request

Add new rule R2.4

If the appellant does not comply with rule R2.1 as prescribed or the protest committee does not comply with rule R2.3, the RYA will refuse to hear the appeal unless there are exceptional circumstances. If other parties to the protest or the protest committee do not meet the requirements of the procedure, the RYA may decide the appeal as it thinks fit.

WORLD SAILING REGULATION 20 ADVERTISING CODE**20.2.3 Right to Display Advertising on a Boat**

When the right to display advertising on a boat is subject to prior authorisation by the national authority in accordance with regulation 20.2.3.3, the approval of the RYA is automatically granted provided that such advertising is permitted by the relevant rules of the class, rating system or handicapping system.

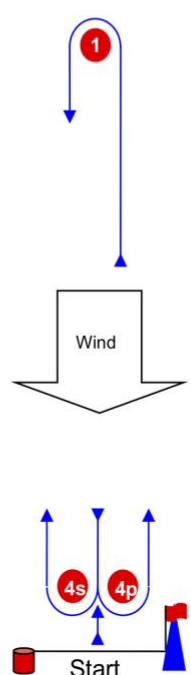
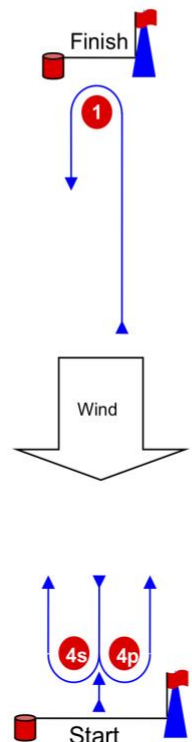
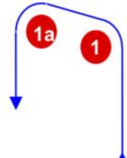
20.8.2 Fees

When the person in charge of a boat chooses to display advertising, the RYA will not impose a fee as permitted by regulation 20.8.2.

NOTE

The RYA prescription to rule 88.2 was approved by World Sailing on 26 July 2016.

ADDENDUM C

Course Illustrations – Windward Leeward																	
<div style="text-align: center; font-size: 2em; font-weight: bold; margin-bottom: 20px;">L</div>  <p style="text-align: center; font-weight: bold; margin-top: 20px;">Course: Leeward finish</p> <table style="width: 100%; border-collapse: collapse;"> <thead> <tr> <th style="text-align: left; padding: 2px;">Signal</th> <th style="text-align: left; padding: 2px;">Mark Rounding Order</th> </tr> </thead> <tbody> <tr> <td style="padding: 2px;">L2</td> <td style="padding: 2px;">Start – 1 – 4s/4p – 1 – Finish</td> </tr> <tr> <td style="padding: 2px;">L3</td> <td style="padding: 2px;">Start – 1 – 4s/4p – 1 – 4s/4p – 1 – Finish</td> </tr> <tr> <td style="padding: 2px;">L4</td> <td style="padding: 2px;">Start – 1 – 4s/4p – 1 – 4s/4p – 1 – 4s/4p – 1 – Finish</td> </tr> </tbody> </table>	Signal	Mark Rounding Order	L2	Start – 1 – 4s/4p – 1 – Finish	L3	Start – 1 – 4s/4p – 1 – 4s/4p – 1 – Finish	L4	Start – 1 – 4s/4p – 1 – 4s/4p – 1 – 4s/4p – 1 – Finish	<div style="text-align: center; font-size: 2em; font-weight: bold; margin-bottom: 20px;">W</div>  <p style="text-align: center; font-weight: bold; margin-top: 20px;">Course: Windward Finish</p> <table style="width: 100%; border-collapse: collapse;"> <thead> <tr> <th style="text-align: left; padding: 2px;">Signal</th> <th style="text-align: left; padding: 2px;">Mark Rounding Order</th> </tr> </thead> <tbody> <tr> <td style="padding: 2px;">W2</td> <td style="padding: 2px;">Start – 1 – 4s/4p – Finish</td> </tr> <tr> <td style="padding: 2px;">W3</td> <td style="padding: 2px;">Start – 1 – 4s/4p – 1 – 4s/4p – Finish</td> </tr> <tr> <td style="padding: 2px;">W4</td> <td style="padding: 2px;">Start – 1 – 4s/4p – 1 – 4s/4p – 1 – 4s/4p – Finish</td> </tr> </tbody> </table>	Signal	Mark Rounding Order	W2	Start – 1 – 4s/4p – Finish	W3	Start – 1 – 4s/4p – 1 – 4s/4p – Finish	W4	Start – 1 – 4s/4p – 1 – 4s/4p – 1 – 4s/4p – Finish
Signal	Mark Rounding Order																
L2	Start – 1 – 4s/4p – 1 – Finish																
L3	Start – 1 – 4s/4p – 1 – 4s/4p – 1 – Finish																
L4	Start – 1 – 4s/4p – 1 – 4s/4p – 1 – 4s/4p – 1 – Finish																
Signal	Mark Rounding Order																
W2	Start – 1 – 4s/4p – Finish																
W3	Start – 1 – 4s/4p – 1 – 4s/4p – Finish																
W4	Start – 1 – 4s/4p – 1 – 4s/4p – 1 – 4s/4p – Finish																
<div style="text-align: center; font-size: 2em; font-weight: bold; margin-bottom: 20px;">LA /</div> 	<p style="text-align: center; font-weight: bold; margin-bottom: 10px;">Course: Windward/leeward with offset mark 1a</p> <table style="width: 100%; border-collapse: collapse;"> <thead> <tr> <th style="text-align: left; padding: 2px;">Signal</th> <th style="text-align: left; padding: 2px;">Mark Rounding Order</th> </tr> </thead> <tbody> <tr> <td style="padding: 2px;">LA2</td> <td style="padding: 2px;">Start – 1 – 1a – 4s/4p – 1 – 1a – Finish</td> </tr> <tr> <td style="padding: 2px;">LA3</td> <td style="padding: 2px;">Start – 1 – 1a – 4s/4p – 1 – 1a – 4s/4p – 1 – 1a – Finish</td> </tr> <tr> <td style="padding: 2px;">LA4</td> <td style="padding: 2px;">Start – 1 – 1a – 4s/4p – 1 – 1a – 4s/4p – 1 – 1a – 4s/4p – 1 – 1a – Finish</td> </tr> <tr> <td style="padding: 2px;">WA2</td> <td style="padding: 2px;">Start – 1 – 1a – 4s/4p – Finish</td> </tr> <tr> <td style="padding: 2px;">WA3</td> <td style="padding: 2px;">Start – 1 – 1a – 4s/4p – 1 – 1a – 4s/4p – Finish</td> </tr> <tr> <td style="padding: 2px;">WA4</td> <td style="padding: 2px;">Start – 1 – 1a – 4s/4p – 1 – 1a – 4s/4p – 1 – 1a – 4s/4p – Finish</td> </tr> </tbody> </table>	Signal	Mark Rounding Order	LA2	Start – 1 – 1a – 4s/4p – 1 – 1a – Finish	LA3	Start – 1 – 1a – 4s/4p – 1 – 1a – 4s/4p – 1 – 1a – Finish	LA4	Start – 1 – 1a – 4s/4p – 1 – 1a – 4s/4p – 1 – 1a – 4s/4p – 1 – 1a – Finish	WA2	Start – 1 – 1a – 4s/4p – Finish	WA3	Start – 1 – 1a – 4s/4p – 1 – 1a – 4s/4p – Finish	WA4	Start – 1 – 1a – 4s/4p – 1 – 1a – 4s/4p – 1 – 1a – 4s/4p – Finish		
Signal	Mark Rounding Order																
LA2	Start – 1 – 1a – 4s/4p – 1 – 1a – Finish																
LA3	Start – 1 – 1a – 4s/4p – 1 – 1a – 4s/4p – 1 – 1a – Finish																
LA4	Start – 1 – 1a – 4s/4p – 1 – 1a – 4s/4p – 1 – 1a – 4s/4p – 1 – 1a – Finish																
WA2	Start – 1 – 1a – 4s/4p – Finish																
WA3	Start – 1 – 1a – 4s/4p – 1 – 1a – 4s/4p – Finish																
WA4	Start – 1 – 1a – 4s/4p – 1 – 1a – 4s/4p – 1 – 1a – 4s/4p – Finish																

ADDENDUM D

HIGH VOLTAGE CABLES AND PIPELINES BETWEEN STONE POINT AND GURNARD

(SEE ADMIRALTY CHART 2040 - THE SOLENT - WESTERN PART)

