

BAR vs BENCH

12th September 2020

COWES

ORGANISING AUTHORITY ROYAL YACHT SQUADRON

SAILING INSTRUCTIONS

1. RULES

The regatta will be governed by:

- 1.1 The rules as defined in the Racing Rules of Sailing 2017 - 2020(RRS).
- 1.2 Rules of the Sonar Class shall apply. White sails only shall be used.
- 1.4 IRC Rules 2019 Parts A, B, and C shall apply, except that IRC rule 21.1.5 (d) & (e) shall not apply.
- 1.5 RRS Appendix D shall apply.
- 1.6 RRS 30 shall not apply. The preparatory signal will be a blue and a yellow flag.
- 1.7 For RRS 29, Flag X will be replaced by a blue or a yellow flag as appropriate depending on which team's boat is over the line.
- 1.8 All crews are required to follow all the latest Covid-19 guidance from NHS England and the Government.
- 1.9 All crews should also follow the latest [RYA Guidance on sailing & racing with participants from different households](#) during COVID-19 in England.
- 1.10 The skipper of each boat shall complete and submit an ['Covid 19 Crew Declaration'](#) form in the 24 hours immediately prior to the event. This form will be available on the RYS Website. Competitors who answer 'False' to any of the questions shall not take part in the event.
- 1.11 To enable "Track and Trace" skippers shall update ['Covid 19 Crew Declaration'](#) for all crew members if crew details change (substitutions etc).

2. NOTICES TO COMPETITORS

- 2.1 The Race Office and Official Notice Board (ONB) will be located in the Royal Yacht Squadron (RYS).

3. CHANGES TO SAILING INSTRUCTIONS

- 3.1 Any change to the Sailing Instructions (SIs) will be notified at the morning briefing.

4. SIGNALS MADE ASHORE

- 4.1 Signals made ashore will be displayed at the RYS Lodge Flagstaff.
- 4.2 Flag 'AP' over 'AP' with two sound signals means all racing is postponed and crews are advised not to go afloat. The first warning signal will be made not less than 45 minutes after the removal of AP over AP at a time that will be announced on VHF Channel 77. The removal of this signal with one sound signal may be followed by a single AP. This adds to RRS 27.3 and Race Signals.

5. SIGNALS MADE AFLOAT


- 5.1 After a long postponement, to alert boats that a race or sequence of races will begin soon, the postponement flag AP will be removed and the orange flag displayed with one sound signal one minute before the Warning Signal is displayed.

6. SCHEDULE OF RACING

- 6.1 The Schedule of Racing is shown in the table below.
- 6.2 The intention is to run five races which may include a 'race around the cans' home.
- 6.3 No warning signal will be made after 1630.
- 6.4 All times in these SIs are British Summer Time (Alpha time which is UTC plus 1 hour).
- 6.5 Schedule including times of HW Portsmouth in BST.

DAY	EVENT TIME or FIRST WARNING SIGNAL	NOTES
Sat 12 Sep HW Portsmouth 0720 3.4m	1000	Briefing at the Island Sailing Club
	1045	Depart for Race Area Lunch
	1800	Drinks at RYS Castle
	1915	Supper & Prizegiving RYS Castle

7. CLASS FLAGS

- 7.1 The class flag will be flag T - 

8. RACING AREA

- 8.1 The racing area for all races will be the Solent.

- 8.2 Racing will take place from a committee vessel (CV) (most probably Blue Lantern) which is likely to be in the Osborne Bay area.

9. COURSES

- 9.1 Course will predominantly be windward/leeward with the course format shown in Appendix A
- 9.2 In the absence of one of the leeward gate marks, the remaining mark is to be left to port.
- 9.3 The final race may be a 'round the cans' race with the course announced over VHF. A Solent Chart showing the Solent Two Character Mark Codes is attached at Appendix B.

10. MARKS

- 10.1 With Reference to Appendix A, marks 1, 1a, 4s & 4p will be orange inflatable marks.
- 10.2 The starboard end starting mark will be the CV. The port end starting mark will be a pillar buoy with orange flag.
- 10.3 The finishing marks will be the CV and be a pillar buoy with orange flag.

11. NAVIGATION RESTRICTIONS

- 11.1 Boats shall not anchor or kedge in the Cowes Harbour fairway.
- 11.2 All boats shall comply with Associated British Ports Notice to Mariners No 14 of 2019 giving details of the Precautionary Area and Moving Prohibited Zone (MPZ). The MPZ shall rank as an obstruction for the purposes of RRS 19 and 20.
- 11.3 Whilst racing, boats shall pass to the north of the Cowes Breakwater.

12. THE START

- 12.1 RRS 26 is superseded by the following sequence

Mins before Start	Visual Signal	Sound Signal	Means
4	Class flag up	One	Warning Signal
3	Blue & Yellow Up	One	Prep Signal
1	Blue & Yellow Down	One long	One minute
0	Class flag down	One	Start

- 12.2 The Starting Line will be between a staff displaying an orange flag on the CV at the starboard end and the course side of the port-end starting mark.
- 12.3 To alert boats that a race will begin soon, the Orange Flag will be displayed on the CV with one sound signal five minutes before the Warning Signal is displayed.
- 12.4 A boat starting later than 10 minutes after her starting signal will be scored DNS without a hearing. This changes RRS A4 and A5.

13. RECALLS

- 13.1 The Race Committee may broadcast the bow numbers of individually recalled boats on VHF CH 77 after Flag X has been displayed, but not sooner than 30 seconds after the start. Delay or failure to do so is not grounds for redress.
- 13.2 Bow numbers will also be used for Uniform and Black Flag notifications and announced on VHF. This changes RRS 30.3 and 30.4.

14. CHANGE OF THE NEXT LEG OF THE COURSE

- 14.1 To change the next leg of the course, the Race Committee will move a mark of the Course (or move the finishing line).
- 14.2 The position of any mark(s) may be adjusted by up to plus or minus 10 degrees relative to previous location and up to approximately 200 metres to windward or leeward without signalling Flag C, a direction signal, a length signal or a sound signal. This changes RRS 33.

15. THE FINISH

- 15.1 CV Line. The finish line will be between a staff displaying a blue flag on the Committee Signal Vessel and the course side of the port-end finishing mark.
- 15.2 RYS Line. The Finishing Line will be between the RYS flagstaff and an orange inflatable mark approximately one cable northward of the RYS flagstaff.

16. PENALTY SYSTEM

- 16.1 RRS 44.1 is changed so that a boat may take a One-Turn Penalty when she may have broken one or more rules of Part 2 or rule 31 in an incident while racing

17. TIME LIMITS

- 17.1 The target time for a race is 35 minutes.
- 17.2 The following time limits shall apply:
- (a) Mark 1 Time Limit. The time limit for the first boat to pass Mark 1 is 30 minutes.
- (b) Race Time Limit. The time limit for the first boat to sail the course and finish is 60 minutes.
- 17.3 If no boat has passed Mark 1 within the Mark 1 Time Limit, or if no boat has finished within the Race Time Limit, the race shall be abandoned.

18. PROTESTS AND REQUESTS FOR REDRESS

- 18.1 Protests and Requests for Redress will not be allowed.

19. SCORING

- 19.1 The Low Point System of Appendix A will apply.
- 19.2 Scores for each Bow Letter will be added to produce a Team Score for each race. Team Bow Letters and Flags are as follows: Bar (Blue Flag) – A, B, C, D. Bench (Yellow Flag) – E, F, G, H.
- 19.3 In the event of a tie after the windward/leeward races, the tie breaker will be the result of the 'round the cans' race home.

20. SAFETY REGULATIONS

20.1 All boats shall sail past the committee vessel on starboard tack and hail their sail or bow number prior to start of the first race.

A boat that retires from a race shall notify the Race Committee as soon as possible on VHF Ch 77 or by hailing the CV.

21. EVENT ADVERTISING

21.1 Boats may be required to display advertising chosen and supplied by the Organising Authority.

22. RADIO COMMUNICATIONS

22.1 All boats shall carry a Marine Band VHF Radio capable of receiving all normal International Channels. All VHF communication shall be on International VHF channels.

22.2 The Race Committee intends to broadcast race information and course information by VHF Ch 77.

22.3 Competitors wishing to communicate with the Race Committee should do so on VHF Ch 77.

22.4 Except in an emergency or when initiated or approved by the Race Committee, a yacht that is racing shall neither make nor receive voice or data transmissions that would constitute outside assistance.

23. PRIZES

23.1 The Gordon Ungley Trophy will be presented to the winning team.

23.2 Prizegiving will be held during the Bar Yacht Club Dinner at the RYS Castle.

24. PRIVACY

24.1 The Royal Yacht Squadron, in compliance with the General Data Protection Regulations 2018 (GDPR), will use information provided by competitors for the purposes of RYS event management only. This data will be held in compliance with the GDPR and will not be shared with any third parties or used for marketing purposes other than contacting competitors by email, post, SMS and telephone with information regarding this event or future events. Competitors will be required to provide their specific consent to this on their entry form.

25. RISK STATEMENT

25.1 Rule 4 of the Racing Rules of Sailing states: "The responsibility for a boat's decision to participate in a race or to continue racing is hers alone."

25.2 Sailing is by its nature an unpredictable sport and therefore involves an element of risk. By taking part in the event, each competitor agrees and acknowledges that:

- (a) They are aware of the inherent element of risk involved in the sport and accept responsibility for the exposure of themselves, their crew and their boat to such inherent risk whilst taking part in the event;

(b) They are responsible for the safety of themselves, their crew, their boat and their other property whether afloat or ashore;

(c) They accept responsibility for any injury, damage or loss to the extent caused by their own actions or omissions;

(d) Their boat is in good order, equipped to sail in the event and they are fit to participate;

(e) The provision of a race management team, patrol boats, and other officials and volunteers by the event organiser does not relieve them of their own responsibilities;

(f) The provision of patrol boat cover is limited to such assistance, particularly in extreme weather conditions, as can be practicably provided in the circumstances;

(g) It is their responsibility to familiarise themselves with any risks specific to this venue or this event drawn to their attention in any rules and information produced for the venue or event and to attend any safety briefing held for the event;

(h) They are responsible for ensuring that their boat is equipped and seaworthy so as to be able to face extremes of weather; that there is a crew sufficient in number, experience and fitness to withstand such weather; and that the safety equipment is properly maintained, stowed and in date and is familiar to the crew.

25.3 COVID Statement

(a) By taking part in any of the events covered by this Sailing Instructions, each competitor agrees and acknowledges that they are responsible for complying with any regulations in force from time to time in respect of COVID-19 and for complying with the Royal Yacht Squadron COVID-19 procedures.

(b) The penalty for a breach of this rule may, at the discretion of the Protest Committee, be less than disqualification. Boats may not protest for breaches of this rule. This changes rule 60.1(a). (DP)

26. INSURANCE

All entrants shall be covered by a minimum Third Party Liability Indemnity of £3 million, or equivalent, and declare that such cover will be maintained in full force throughout the event.

27. FURTHER INFORMATION

27.1 Further information will be available on the RYS website – www.rys.org.uk

APPENDIX A

Course Illustrations – Windward Leeward

L

Course: Leeward finish

Signal	Mark Rounding Order
L2	Start – 1 – 4s/4p – 1 – Finish
L3	Start – 1 – 4s/4p – 1 – 4s/4p – 1 – Finish
L4	Start – 1 – 4s/4p – 1 – 4s/4p – 1 – 4s/4p – 1 – Finish

W

Course: Windward Finish

Signal	Mark Rounding Order
W2	Start – 1 – 4s/4p – Finish
W3	Start – 1 – 4s/4p – 1 – 4s/4p – Finish
W4	Start – 1 – 4s/4p – 1 – 4s/4p – 1 – 4s/4p – Finish

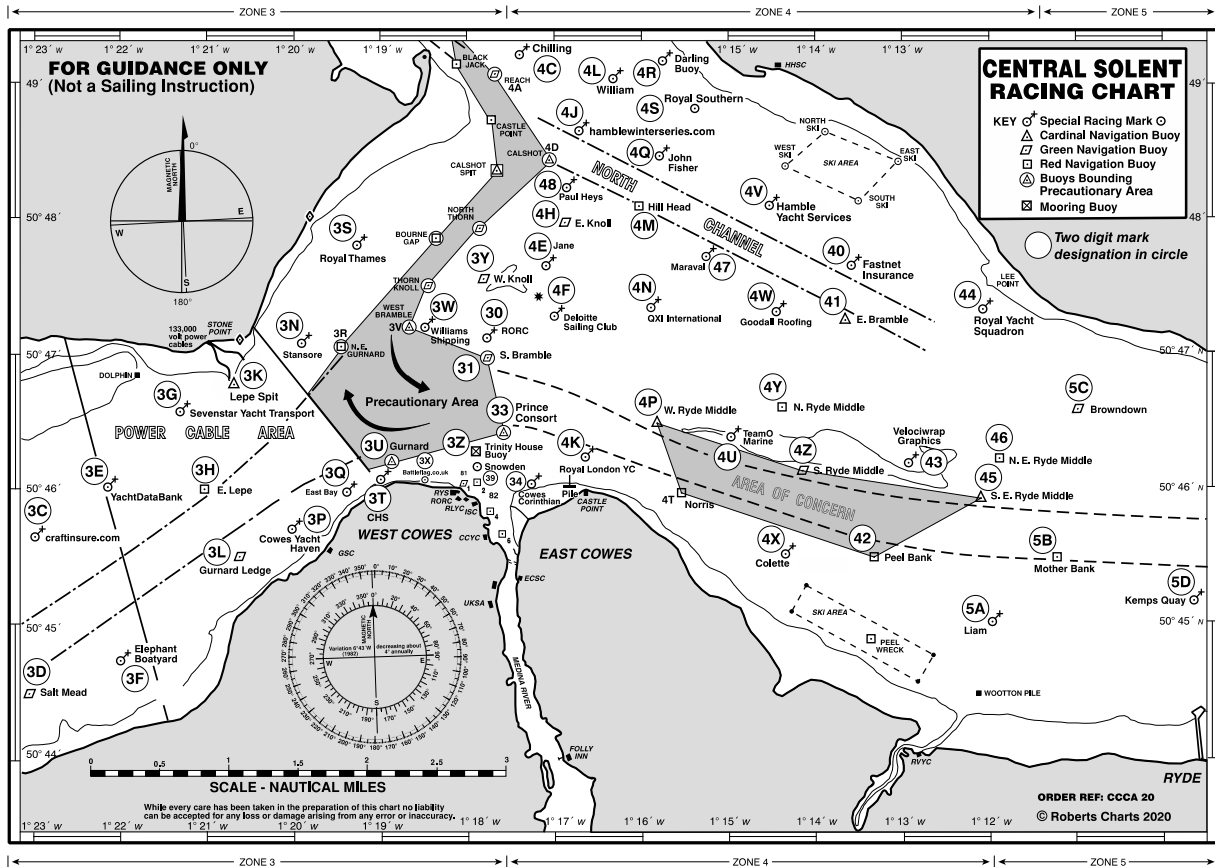
LA / WA

Course: Windward/leeward with offset mark 1a

Signal	Mark Rounding Order
LA2	Start – 1 – 1a – 4s/4p – 1 – 1a – Finish
LA3	Start – 1 – 1a – 4s/4p – 1 – 1a – 4s/4p – 1 – 1a – Finish
LA4	Start – 1 – 1a – 4s/4p – 1 – 1a – 4s/4p – 1 – 1a – 4s/4p – 1 – 1a – Finish
WA2	Start – 1 – 1a – 4s/4p – Finish
WA3	Start – 1 – 1a – 4s/4p – 1 – 1a – 4s/4p – Finish
WA4	Start – 1 – 1a – 4s/4p – 1 – 1a – 4s/4p – 1 – 1a – 4s/4p – Finish

APPENDIX B

• **Solent Chartlets and Two Character Solent Mark Codes**



All correspondence should be directed to:

The Royal Yacht Squadron, The Castle, Cowes, UK, PO31 7QT. Tel: 01983 292191, Email: mail@rys.org.uk