



**BRITISH OPEN CHAMPIONSHIPS FOR SIX METRE
CLASS
12-13 JUNE & 19-20 JUNE 2021
COWES**

**ORGANIZING AUTHORITY:
ROYAL YACHT SQUADRON**

SAILING INSTRUCTIONS

The notation '[DP]' in a rule in the Sailing Instructions means that the penalty for a breach of that rule may, at the discretion of the protest committee, be less than disqualification.

*The notation '[NP]' in a rule of the Sailing Instructions (SIs) means that a boat may not protest another boat for breaking that rule.
This changes RRS 60.1(a).*

1. RULES

- 1.1 Racing will be governed by the rules as defined in The Racing Rules of Sailing (RRS).
- 1.2 The International Six Metre Class Rating Rule.
- 1.3 Notices to Mariners for the Ports of [Southampton](#), [Portsmouth](#) and [Cowes](#). [DP]
- 1.4 All crews are required to follow all the latest Covid-19 guidance from NHS England and the Government. [DP]
- 1.5 All crews should also follow the latest [RYA Guidance on sailing & racing with participants from different households during Covid 19 in England](#). [DP]

2. CHANGES TO SAILING INSTRUCTIONS

- 2.1 Any change to the Sailing Instructions (SIs) made ashore will be posted by 0900 on the day it will take effect, except that any change to the schedule of races will be posted by 2000 on the day before it will take effect.
- 2.2 Changes to a Sailing Instruction may be made on the water using VHF Radio to communicate with competitors.

3. COMMUNICATIONS WITH COMPETITORS

- 3.1 Notices to competitors will be posted on the Official Notice Board (ONB).
- 3.2 The ONB will be online at www.rys.org.uk. There is no physical ONB.
- 3.3 The Race Office is in the Royal Yacht Squadron (RYS).
- 3.4 The Race Committee intends to broadcast race information and course information by VHF Ch 05.
- 3.5 Competitors wishing to communicate with the Race Committee should do so on VHF Ch 77.

4. CODE OF CONDUCT

- 4.1 Competitors and support persons shall comply with reasonable requests from race officials.
- 4.2 Competitors and support persons shall handle or place any equipment or advertising provided by the organizing authority with care, seamanship and in accordance with any instructions for its use and without interfering with its functionality.

5. SIGNALS MADE ASHORE

- 5.1 Signals made ashore will be displayed at the RYS Lodge Flagstaff.

6. SCHEDULE OF RACES


- 6.1 The Schedule of Races is shown in the table below. All times are British Summer Time (UTC plus 1 hour).
- 6.2 The Race Committee intends running eight (8) races over the two weekends.
- 6.3 The Race Committee may alter the schedule of races to cater for adverse weather conditions.
- 6.4 The Race Committee intends to run no more than two (2) races each day. However additional races may be sailed in order to complete the programme because of weather or other reasons.
- 6.5 On the last day of racing each weekend, no warning signal will be made after 1500.

Day	Briefing	First Warning Signal	Notes
Sat 12 June HW Ports 1350 4.4m	By VHF at 0900	1025 Race 2 asap after finish Race 1.	Race 1 CV Start.
Sun 13 June HW Ports 1420 4.4m	By VHF at 0930	1025 Race 4 asap after finish Race 3.	Race 3 CV Start.
Sat 19 June HW Ports 0640 4.0m	By VHF at 0900	1025 Race 6 asap after finish Race 5.	Race 5 CV Start.
Sun 20 June HW Ports 0750 4.1m	By VHF at 0930	1025 Race 8 asap after finish Race 7.	Race 7 CV Start.

- 6.6 Schedule.

7. CLASS FLAGS

- 7.1 The Class flag for the International Six Metre (6M) Class will be Naval Numeral 2.

Class Flag	Naval Numeral 2. 
------------	-----------------------------------------------------------------------------------------------------------

All correspondence should be directed to:

The Royal Yacht Squadron

The Castle, Cowes, UK, PO31 7QT. Tel: 01983 292191, Email: mail@rys.org.uk

8. RACING AREA

- 8.1 Racing will take place in the Central Solent and Hill Head Plateaux. The approximate location of the Committee Vessel will be announced on VHF Channel 05.

9. COURSES

- 9.1 The format for racing will be Windward / Leeward. See Addendum A.
- 9.2 Course letters and number of laps for Windward / Leeward courses will be displayed on the CV.
- 9.3 No later than the Warning Signal, the CV will display the approximate compass bearing of the first leg and the course to be sailed.
- 9.4 The diagrams in Addendum A of these SIs show the courses, including the approximate angles between legs, the order in which the marks are to be passed, and the side on which each mark is to be left.
- 9.5 A chartlet showing the Solent Two Character Codes may be found in Addendum B of these SIs.

10. MARKS

- 10.1 With reference to Addendum A, marks 1, 1a, 4s & 4p will be orange inflatable marks.
- 10.2 With reference to gate marks 4p/4s, if only one gate mark is in position, that mark shall be rounded to port.
- 10.3 The starting marks will be a Committee Vessel and a black inflatable mark.
- 10.4 The finishing marks will be a Committee Vessel and a black inflatable mark.
- 10.5 When a new mark has been laid to change the next leg of a W/L course it will be a black inflatable mark. If the new mark is a windward mark, then the offset mark 1a will not be laid and is no longer part of the course.)

11. OBSTRUCTIONS

- 11.1 Boats shall not anchor or kedge in the Cowes Harbour fairway or within the area denoting power cables and gas pipes between Stone Point and Gurnard Bay, as shown on Admiralty Chart 2040, or within the mining ground area north east of Ryde Sand.
- 11.2 All boats shall comply with Associated British Ports Notice to Mariners No 09 of 2021 giving details of a Precautionary Area and Moving Prohibited Zone (MPZ). The MPZ shall rank as an obstruction for the purposes of RRS 19 and 20.
- 11.3 Whilst racing, boats shall pass to the north of the Cowes Breakwater.

12. THE START

- 12.1 Races will be started by using RRS 26 with the Warning Signal made 5 minutes before the Starting Signal.
- 12.2 The starting line will be between a staff displaying an orange flag on the Committee Vessel at the starboard end and the course side of the port-end starting mark.
- 12.3 Races will not be started in less than an average of 5 knots of wind established over the entire racecourse area. This limit may be higher if there is a strong current in the racing area.

- 12.4 If any part of a boat's hull is on the course side of the starting line during the two minutes before her starting signal and she is identified, the Race Committee will attempt to broadcast her sail number on VHF CH 05. Failure to make a broadcast or time it accurately will not be grounds for redress. This changes RRS 62.1(a).

- 12.5 If any part of a boat's hull is on the course side of the starting line at her starting signal and she is identified, the Race Committee will attempt to broadcast her sail number on VHF CH 05 after Flag X has been displayed, but not sooner than 30 seconds after the start. Delay or failure to do so is not grounds for redress. This changes RRS 62.1(a).

13. CHANGE OF THE NEXT LEG OF THE COURSE

- 13.1 When a change the next leg of the course has been signalled, the Race Committee will lay a new mark (or move the finishing line) and remove the original mark as soon as practicable. When in a subsequent change a new mark is replaced, it will be replaced by an original mark.
- 13.2 The position of any mark(s) may be adjusted by up to plus or minus 10 degrees relative to previous location and up to approximately 200 metres to windward or leeward without signalling Flag C, a direction signal, a length signal or a sound signal. This changes RRS 33.

14. THE FINISH

- 14.1 The finish line for Windward Leeward Courses will be between a staff displaying a blue flag on the Committee Signal Vessel and the course side of the port-end finishing mark.

15. PENALTY SYSTEM

- 15.1 RRS Rule 44.1 is changed so that the penalty for a boat breaking a rule in Part 2 shall be a One-Turn Penalty (1 tack and 1 gybe).

16. TIME LIMITS

- 16.1 The following time limits will apply.
- (a) Mark 1 Time Limit. The time limit for the first boat to pass Mark 1 is 50 minutes.
- (b) Race Time Limit. The time limit for the first boat to sail the course and finish is 120 minutes.
- (c) Finishing Window. The time limit for boats to finish after the first boat sails the course and finishes is 30 minutes.
- 16.2 If no boat has passed Mark 1 within the Mark 1 Time Limit, or if no boat has finished within the Race Time Limit, the race shall be abandoned.
- 16.3 Boats failing to finish within the Finishing Window shall be scored Did Not Finish without a hearing. This changes RRS 35, A4 and A5.

17. HEARING REQUESTS

- 17.1 Hearing forms will be available at the Race Office. Protest and requests for redress or reopening shall be delivered to the Race Office within the protest time limit. Contact mobile phone numbers should be included on the protest form.

All correspondence should be directed to:

The Royal Yacht Squadron

The Castle, Cowes, UK, PO31 7QT. Tel: 01983 292191, Email: mail@rys.org.uk

- 17.2 The protest limit is 90 minutes after the last boat has finished the last race of the day or the Race Committee signals no more racing today, whichever is later.
- 17.3 Notices will be posted no later than 30 minutes after the protest time limit to inform competitors of the hearings in which they are parties or named as witnesses. Hearings will be held in the protest room located at the RYS.
- 17.4 Notices of Protests by the Race Committee, Technical Committee or Protest Committee will be posted to inform boats under RRS 61.1(B).
- 17.5 On the last scheduled day of racing a request for redress based on a protest committee decision shall be delivered no later than 30 minutes after the decision was posted. This changes RRS 62.2.

18. SCORING

- 18.1 Low points scoring system will apply.
- 18.2 Two (2) races are required to be completed to constitute a series for the 6mR British Open Championships.
- 18.3 When six (6) or more races have been completed, a boat's score will be the total of her race scores excluding her worst score.

19. SAFETY REGULATIONS

- 19.1 A boat that retires from a race shall notify the Race Committee as soon as possible on VHF Ch 77 or by hailing an official Event Support Boat or rib. [DP]

20. REPLACEMENT OF CREW OR EQUIPMENT

- 20.1 Substitution of competitors is not allowed without the prior written permission of the Race Committee.
- 20.2 Substitution of damaged or lost equipment is not allowed unless authorised in writing by the Race Committee. Requests for substitution shall be made to the committee at the first reasonable opportunity, which may be after the race.

21. EQUIPMENT AND MEASUREMENT CHECKS

- 21.1 A boat or equipment may be inspected at any time for compliance with the Class Rules and Sailing Instructions.

22. SUPPLIED BOATS

- 22.1 Does not apply.

23. OFFICIAL VESSELS

- 23.1 Mark laying vessels will be RYS Ribs.

24. SUPPORT TEAMS

- 24.1 Team leaders, coaches and other support personnel must stay outside areas where boats are racing from the time of the preparatory signal for each start thereafter until all boats have finished or retired or the Race Committee signals a postponement, general recall or abandonment. [DP]
- 24.2 All support boats shall carry marine VHF radios and agree to assist the Race Committee if directed to do so. [DP]

25. TRASH DISPOSAL

- 25.1 Trash may be placed aboard official or support vessels.

26. BERTHING

- 26.1 Event berthing is the responsibility of each boat and is not included in the entry fee. Visiting boats should contact Cowes Yacht Haven or Shepards Wharf Marina for berthing reservations.

27. HAUL OUT RESTRICTIONS

- 27.1 All boats shall be afloat by 1730 the day before the first race. [DP]
- 27.2 Boats shall not be hauled out during the Event except with and according to the terms of prior written permission of the race committee. [DP]

28. DIVING EQUIPMENT AND PLASTIC POOLS

- 28.1 Underwater breathing apparatus and plastic pools or their equivalent shall not be used around competing boats between the preparatory signal of the first race and the end of the event. [DP]
- 28.2 Keelboats shall not be cleaned below the waterline by any means between the preparatory signal of the first race and the end of the event. [DP]

29. PRIZES

- 29.1 Prizegiving will be held in the RYS as soon as possible after the last race has been completed and after any protest hearings.
- 29.2 The event prize giving will be held at the Royal Yacht Squadron as soon as possible after the final day's racing and after any protest hearing(s).
- 29.3 Prizes will be awarded for the first, second and third boats.
- 29.4 Prizes for the British Open Championships for the Six Metre Class will be awarded for both Open and Classic boats.
- (a) For the Open Division (Modern) - The Lion Bowl.
- (b) For the Classic Division - The Dudley Head Salver.

30. RISK STATEMENT

- 30.1 Rule 3 of the Racing Rules of Sailing states: "The responsibility for a boat's decision to participate in a race or to continue racing is hers alone."
- 30.2 Sailing is by its nature an unpredictable sport and therefore involves an element of risk. By taking part in the event, each competitor agrees and acknowledges that:
- (a) They are aware of the inherent element of risk involved in the sport and accept responsibility for the exposure of themselves, their crew and their boat to such inherent risk whilst taking part in the event;
- (b) They are responsible for the safety of themselves, their crew, their boat and their other property whether afloat or ashore;
- (c) They accept responsibility for any injury, damage or loss to the extent caused by their own actions or omissions;
- (d) Their boat is in good order, equipped to sail in the event and they are fit to participate;

All correspondence should be directed to:

The Royal Yacht Squadron

The Castle, Cowes, UK, PO31 7QT. Tel: 01983 292191, Email: mail@rys.org.uk

- (e) The provision of a race management team, patrol boats, and other officials and volunteers by the event organiser does not relieve them of their own responsibilities;
- (f) The provision of patrol boat cover is limited to such assistance, particularly in extreme weather conditions, as can be practically provided in the circumstances;
- (g) It is their responsibility to familiarise themselves with any risks specific to this venue or this event drawn to their attention in any rules and information produced for the venue or event and to attend any competitor or safety briefing held for the event;
- (h) They are responsible for ensuring that their boat is equipped and seaworthy so as to be able to face extremes of weather; that there is a crew sufficient in number, experience and fitness to withstand such weather; and that the safety equipment is properly maintained, stowed and in date and is familiar to the crew.

30.3 COVID Statement

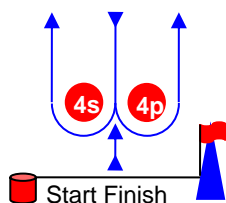
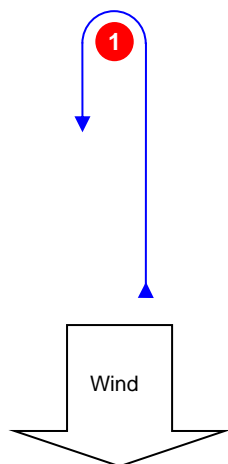
- (a) By taking part in any of the events covered by this Notice of Race, each competitor agrees and acknowledges that they are responsible for complying with any regulations in force from time to time in respect of COVID-19 and for complying with the Royal Yacht Squadron COVID-19 procedures.
- (b) The penalty for a breach of this rule may, at the discretion of the Protest Committee, be less than disqualification. Boats may not protest for breaches of this rule. This changes rule 60.1(a). *(DP)*

31. INSURANCE

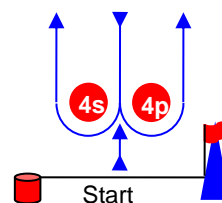
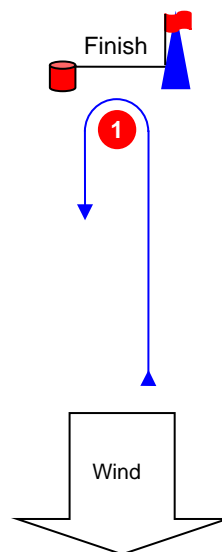
- 31.1 Each participating boat is required to hold insurance cover and in particular to hold adequate insurance against third party claims of at least £3 million.

ADDENDUM A

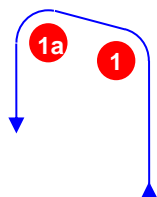
Course Illustrations – Windward Leeward

L**Course: Leeward finish**

Signal	Mark Rounding Order
L2	Start – 1 – 4s/4p – 1 – Finish
L3	Start – 1 – 4s/4p – 1 – 4s/4p – 1 – Finish
L4	Start – 1 – 4s/4p – 1 – 4s/4p – 1 – 4s/4p – 1 – Finish

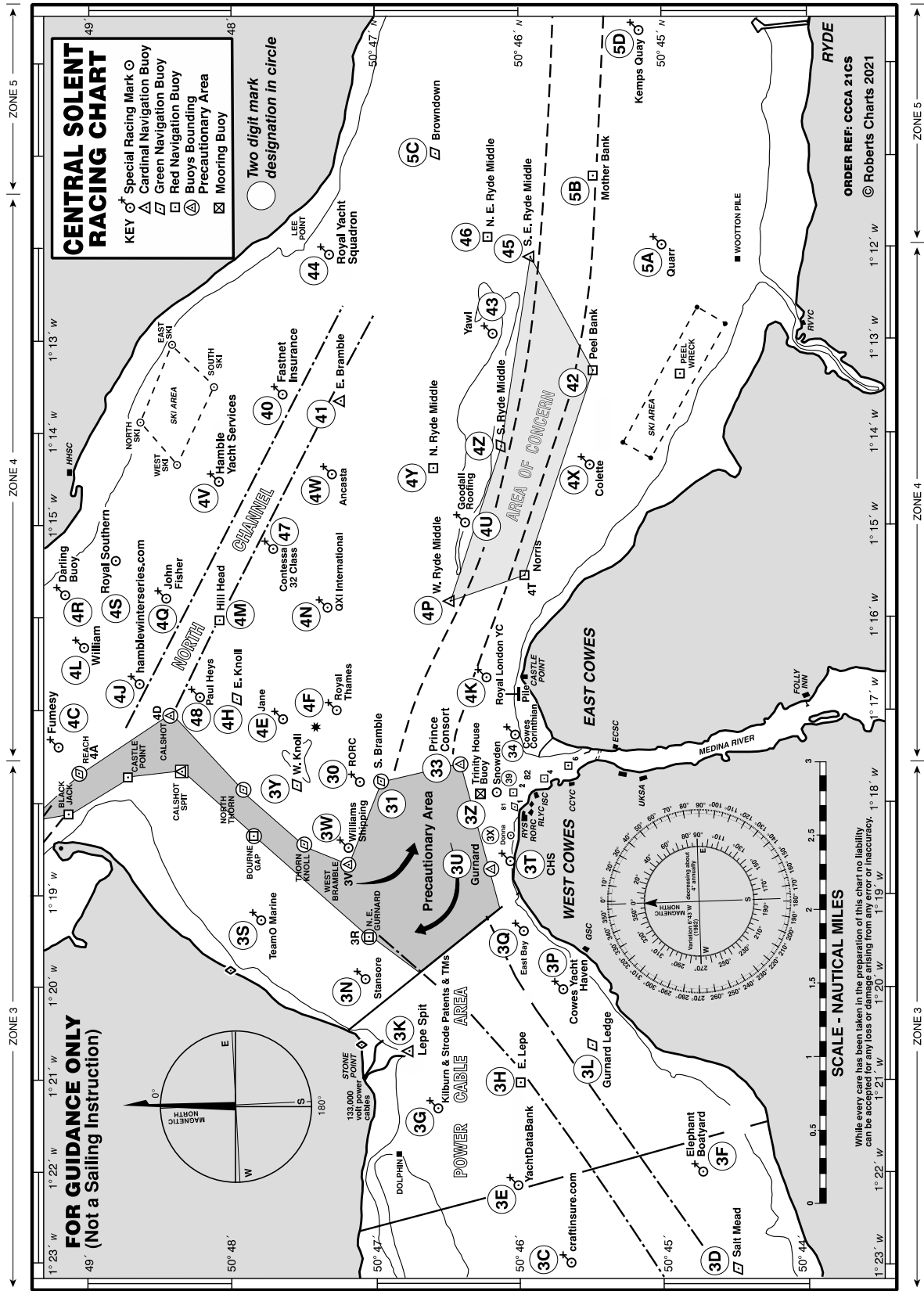
W**Course: Windward Finish**

Signal	Mark Rounding Order
W2	Start – 1 – 4s/4p – Finish
W3	Start – 1 – 4s/4p – 1 – 4s/4p – Finish
W4	Start – 1 – 4s/4p – 1 – 4s/4p – 1 – 4s/4p – Finish

LA / WA**Course: Windward/leeward with offset mark 1a**

Signal	Mark Rounding Order
LA2	Start – 1 – 1a – 4s/4p – 1 – 1a – Finish
LA3	Start – 1 – 1a – 4s/4p – 1 – 1a – 4s/4p – 1 – 1a – Finish
LA4	Start – 1 – 1a – 4s/4p – 1 – 1a – 4s/4p – 1 – 1a – 4s/4p – 1 – 1a – Finish
WA2	Start – 1 – 1a – 4s/4p – Finish
WA3	Start – 1 – 1a – 4s/4p – 1 – 1a – 4s/4p – Finish
WA4	Start – 1 – 1a – 4s/4p – 1 – 1a – 4s/4p – 1 – 1a – 4s/4p – Finish

ADDENDUM B



ADDENDUM C

We have set up an official WhatsApp group for receiving general information from the Race Office. To join the WhatsApp group please use the below QR Code:



Instructions on using QR codes:

- For Apple phones: Please open your camera app and point it at the QR code and then follow the link it displays on your screen.
- For Android phones: Please obtain a barcode scanning app from the Google Play Store such as "Barcode Scanner", open the barcode scanning app and point it at the QR code and then follow the link it displays on your screen.