

Cowes Clubs & Classes Association



2025 Fixtures and Sailing Instructions



ROYAL THAMES
YACHT CLUB

ccca.teamapp.com

Boatyard



40 TONNE BOAT HOIST
SECURE STORAGE
CHANDLERY & TRADES
MULTI-SERVICE PACKAGE DISCOUNTS
01983 299385 | boatyard.chc@cowes.co.uk

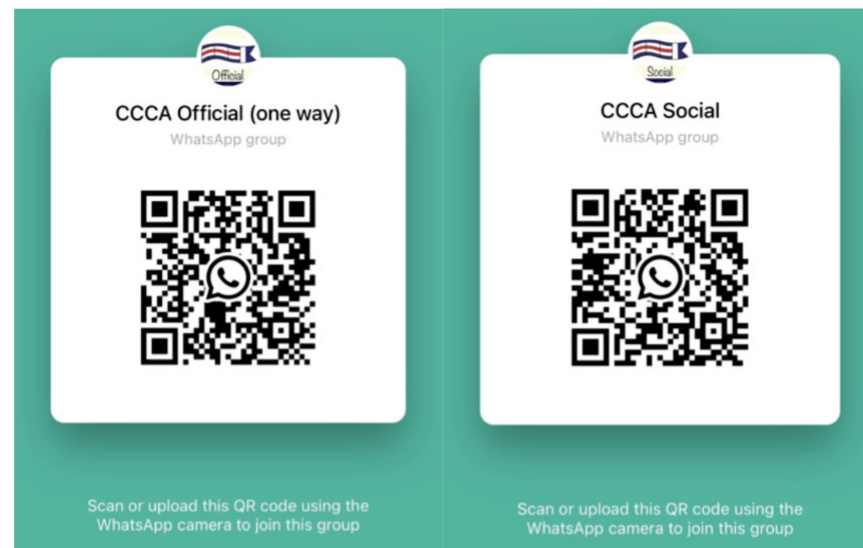
VISITOR AND RESIDENT BERTHS
RIBS, YACHTS & MOTORBOATS
DRY SAILING
RALLIES & REGATTAS
01983 297821 | shepards.chc@cowes.co.uk
cowes.co.uk | app.cowes.co.uk

Marina



WhatsApp

We have set up an official WhatsApp group for receiving general one way information from the Race Office and a Social WhatsApp group for feedback and other social info. To join the WhatsApp group please use the below QR Codes:



Team App

Official Documents can be found in the CCCA Team App via the QR Code or duplicate website below:



<https://ccca.teamapp.com>

JOLLIFFES CHANDLERY

EVERYTHING FOR YOUR BOAT

Brands in stock include

spinlock

Cobra
MARINE

Crewsaver

HARKEN



OCEAN SAFETY®

XM
YACHTING

BLUE SEA

RONSTAN

HOLT

Whale

WAVELINE

PLASTIMO

LEWMAR

MODEL SHOP COMING SOON

www.jolliffeschandlery.co.uk

2-4 Birmingham Road, Cowes

01983 290100



Cowes Clubs and Classes Association



2025 Fixtures

Dates		HW <i>Portsmouth (Sat/Sun)</i>	Organising <i>Club</i>	CCCA Fixture <i>Cowes Solent Series (Club Shoreline) or Committee Boat (CKC)</i>	Cowes Corinthian YC <i>Shrape Line</i>
April	Sat 5/Sun 6	0525/0645	Cowes Corinthian		Sat and Sun Series #1
April	Sat 19/Sun 20	1615/1715	Cowes Corinthian		Spring Open Regatta A
May	Sat 3 / Sun 4	1700/1800	Royal London	Cowes Solent Series	Sat and Sun Series #2
May	Sat 10/Sun 11	1100/1140	Royal Thames	Cowes Solent Series (ISC)	
May	Sat 17/Sun 18	1520/1610	Island Sailing Club	Cowes Solent Series	
May	Sat 24/Sun 25	0935/1025	RORC Cowes	Cowes Solent Series #	May Open Regatta B
Friday 30 May to Monday 2 June Cowes Classics Regatta					
Saturday 7 June		Island Sailing Club		Round the Island Race	
Thursday 12 to Sunday 15 June Royal Thames Yacht Club - 250th Anniversary Regatta					
June	Sat 14/Sun 15	1430/1510	Royal Thames	Committee Boat (CKC1) Daring Cory Cup (SIs TBA)	
June	Sat 21/Sun 22	1250/1320	Royal Yacht Squadron	Cowes Solent Series	(IW Festival Weekend)
June	Sat 28/Sun 29	1445/1540	Royal London	Committee Boat (CKC2)	Summer Open Regatta C
July	Sat 5 / Sun 6	0755/0905	Cowes Corinthian	Cowes Solent Series (RORC)	
July	Sat 12/Sun 13	1340/1420	RORC Cowes	Cowes Solent Series	Sat and Sun Series #3
July	Sat 19	1910	Household Division	Annual Regatta (RYS)	
July	Sun 20	0740	Royal Yacht Squadron	Cowes Solent Series	
July	Sat 26/Sun 27	1330/1420	No racing		July Open Regatta D
Saturday 2 to Friday 8 August Cowes Week					
Aug	Sat 9/Sun 10	1340/1310	No racing		
Aug	Sat 16/Sun 17	1740/1850	No racing		Sat and Sun Series #4
Aug	Sat 23/Sun 24	1540/1630	Royal Thames	Cowes Solent Series (ISC) Daring P&E Egan Trophy #	
Aug	Sat 30/Sun 31	1635/1720	Island Sailing Club	Committee Boat Daring Roddy Carritt Cup	Late Summer Open Regatta E
Sept	Sat 6/Sun 7	1130/1210	Royal Yacht Squadron	Committee Boat (CKC3)	
Sept	Sat 13/Sun 14	1620/1720	Royal London	Cowes Solent Series	Sat and Sun Series #5
Sept	Sat 20/Sun 21	1210/1220	Island Sailing Club	Committee Boat (CKC4) Daring Stug Perry Trophy	
Sept	Sat 27/Sun 28	1030/1120	Island Sailing Club	Cowes Solent Series Daring Stug Perry Trophy #	Late September Open Regatta F
Dec	Fri 26	1515	Cowes Corinthian		Boxing Day Scramble

Key: CKC - Cowes Keelboat Championship. # - See Notice of Race 8.4 for different Daring Class warning signal times

Cowes Clubs and Classes Association
Cowes Dayboat Regattas 2025
Cowes Solent Series and Cowes Keelboat Championship
Notice of Race Summary (See TeamApp for full NoR)

Participating clubs invite boat owners of the Daring, Dragon, Sonar, RS Elite, XOD and other keelboat classes and cruisers by arrangement, to enter the following regattas at Cowes to be held on the dates below. The notation [DP] in a rule in the notice of race (NoR) means that the penalty for a breach of that rule may, at the discretion of the protest committee, be less than disqualification. The notation [NP] in a rule of the NoR means that a boat may not request redress or protest another boat for breaking that rule.

1. Organising Authority

The organising authority is the club indicated on the Programme for the weekends shown in the 2025 Fixtures.

2. Rules

- 2.1 Racing is governed by the World Sailing (WS) *Racing Rules of Sailing (RRS)* and *Offshore Safety Regulations (OSR)*.
 2.2 In the event of conflict between a sailing instruction (SI), the class rules and the NOR, the SIs will prevail.
 2.3 (DP) All boats intending to race, from the time they leave their moorings/berths until their return after racing or retiring, shall:
 2.3.1 Give way to all ferries and commercial vessels within Cowes harbour and its approaches.
 2.3.2 Observe the Southampton harbour byelaws (www.southamptonvts.co.uk/port_information/regulations/byelaws) and avoid close quarters situations with any commercial vessel and comply with Byelaw 11(1).
 2.3.3 Carry no anchor forward of the stem or with any part of it outboard, except when anchoring.
 2.4 All boats shall comply with their class safety regulations and all safety equipment shall be of a suitable size for the type of boat with all equipment and fittings shall be securely fastened. This includes the requirement to carry visual means of attracting attention when in distress and a suitable tow rope and a secure means of attachment to enable a tow. All boats shall carry a suitable marine band VHF radio capable of receiving all channels and a marine compass.
 2.5 When RRS 20 applies, a hailing boat may also indicate her need for room to tack or response by VHF radio.
 2.6 (DP) Boats may carry one or more mobile phones for receiving WhatsApp or text messages with courses and other race information. In accordance with RRS 87, this changes class rules where applicable.
 2.7 (NP) Boats, particularly hired boats, shall not be able to seek redress in the event of gear or equipment failure.

3. Conditions of Entry

- 3.1 Before racing the first named boat owner shall enter their boat on the official entry form, pay the applicable fixed shoreline fee, sign the declaration and risk statement indicating that they understand this NoR and be bound by the contents for all racing.
 3.2 Boats may be checked for safety equipment before or after each race at the discretion of the race committee. No dedicated patrol boats are provided for this series, see section 17 (f).
 3.3 Before racing the first named boat owner shall ensure that there is adequate insurance for racing risks including third party indemnity of at least £3 million and that co-owners and co-helms, if any, and the crew are made aware of the undertakings in the conditions of entry.

4. Class Flags

The following International Code (IC) or Naval Numeral (NN) warning flags apply:

Dayboats starting together:	IC flag R.			
Individual class starts:	Daring:	IC flag O.	Dragon:	IC flag D.
Etchells:	IC flag E	Flying 15:	NN flag 6.	Sonar:
XOD:	IC flag W.	Cruisers:	NN 1.	

5. Sailing Instructions, Flag Signals and Start Lines

Sailing instructions will be available from each organising club on the Friday of the weekend prior to their regatta weekend. Flag signals and shoreline start lines for the Royal Thames YC, Cowes Corinthian YC and the Household Division YC will be located at the Island Sailing Club, RORC Cowes and Royal Yacht Squadron respectively. On some days flag signals may not be displayed but only announced on VHF radio or notified by WhatsApp.

6. Racing Area, Courses and Communications

- 6.1 The racing area is The Solent.
 6.2 The course will consist of Solent navigation and fixed yellow racing and /or laid marks which have been allocated code letters and numbers as listed.
 6.3 (DP) Boats are required to keep a radio watch whilst racing. The course to be sailed will be communicated by VHF **channel 37A (M1)** for fixed shoreline starts and VHF **channel 77** for committee boat races.

- 6.4 Courses may also be texted or communicated by WhatsApp on most fixed shore and committee boat weekends. Entrants are asked to submit on the entry form all the mobile telephone numbers that might be used on the boat during the season.
 6.5 Delay or failure to receive or hear VHF transmissions or to receive texted courses or WhatsApp courses and race information shall not be grounds for redress. (DP) From the first warning signal until the finish of the last race of the day, except in an emergency, a boat shall not make voice or data transmissions and shall not receive voice or data communication that is not available to all boats.
 6.6 The QR code for this NoR is shown in the sailing instructions and is available at ccca.teamapp.com

7. Rating System

The dayboat classes starting together will be rated by the organising club or CCCA if it concerns the Cowes Solent Series. A boat's Time Correction Factor (TCF - to three decimal places) may be adjusted after every fourth race. (NP) The TCF of a boat or an adjustment in a boat's TCF is not grounds for redress.

8. Warning Signal Times

- 8.1 Unless otherwise advised in any amendment to the SIs, the following warning signal (WS) times will apply:

WS Flag	Class	Warning Signal Times	
		Saturday	Sunday
O	Daring Class first race	12:10	12:10
R	Other classes first race	12:15	12:15
T	Sonar 4 boats or more (<i>see note below</i>)	12:20	12:20
W	XODs 4 boats or more (<i>see note below</i>)	12:25	12:25
O	Daring Class second race	ASAP after the first race	No second race*
R	Other classes second race	ASAP after the first race	No second race*

Note: If a class wishes to have their own start on a day, they should have 4 boats or more and advise the host club race committee in advance.

- 8.2 On fixed shore Saturdays there will be two races for Daring Cowes Solent Series and, if notified, other classes. In addition. *If only one race is completed on the Saturday, two races may be held on the Sunday.
 8.3 On CKC committee boat weekends there will be two W-L races per day. *If only one W-L race is completed on the Saturday three W-L races may be held on the Sunday.
 8.4 Changes to the Daring start times:
 On Sunday 25 May, Sunday 24 August and Sunday 28 September there will be two races.
 On Sunday 25 May the warning signal for the race will be at 13:10 due to the Rules Clinic.
 On Sunday 28 September the warning signal for the race will be at 11:10 due to the Daring Lunch.
9. Course Restrictions and Obstructions
 9.1 (DP) Boats shall comply with Associated British Ports Notice to Mariners No 06 of 2025 - Precautionary Area (Thorn Channel). The 'Moving Prohibited Zone' shall rank as an obstruction for the purposes of RRS 19 and 20. Boats shall avoid close quarters with any commercial vessel.
 9.2 (DP) Boats, in whatever direction they are racing, shall not pass:
 (i) South of the Cowes harbour breakwater. (ii) north of the barrier off Durns Point, east of Lympington
 (iii) north of Horse Sand Fort.
 9.3 (DP) Boats shall not anchor or kedge in the Cowes harbour fairway and in the area between Stone Point and Gurnard Bay as indicated on the racing chart in the SIs and on Admiralty Chart 2040. Gas and water pipes, telephone cables and electricity cables lie on the seabed.
 9.4 (NP) The race committee may set courses that do not permit boats to sail rhumb lines courses between marks, particularly over the central Solent Bramble Bank. This shall not be grounds for redress.
10. Penalty System
 See SI 8.
11. Navigation Buoys
 (DP) Boats racing shall use all reasonable endeavours to avoid contact with navigation buoys, whether marks of the course or not. In case of contact, whether or not leading to damage to the buoy, the circumstances of the incident and details of any damage shall be reported to the race committee within the protest time limit. RRS31 and 44 shall remain in force. If the navigation buoy has been damaged the race committee will advise the chairman of the SCRA. The race committee may also protest the boat.
12. Time Limits
 Changing RRS 35, the race committee may award a finishing position or DNF to any boat not finishing within 20 minutes (on corrected time if applicable) after the first boat finishes to enable further race(s) to be sailed or racing to be concluded. Changing RRS 35, should no boat finish by the time limit, the result of the race may be determined from the previous time the start/finish line was crossed or the order of boats at a rounding mark or their position at the time limit.

13. Scoring

- 13.1 Class associations are to score their own overall and trophy series points. For any club trophies or prizes the scoring will be in accordance with RRS Appendix A with one discard allowed from each club's fixed shoreline Cowes Solent Series (CSS). If three or fewer of a club's Cowes Solent Series races are completed then all shall count. This does not apply to the Daring Class.
- 13.2 Scoring for the Daring Class only:
- 13.2.1 The Cowes Keelboat Championship scoring system will include 1 discard after 8 races, 2 if 10, 3 if 12, 4 if 14 and 5 if 16 races are completed.
- 13.2.2 For Solent Series, the scoring system will include 1 discard after 5 races, 2 after 7 and 3 after 9 races.
- 13.2.3 The Daring Roddy Carritt Cup twelve short races are scheduled. Four races are required to constitute a series. The scoring system will include 1 discard after 5 races, 2 after 7 and 3 after 9 races. The results for the Daring Challenge Bowl for this series only will be awarded as follows: The results from races 1 to 3 will be run as a mini series with the overall result counting to the Daring Challenge Bowl. This will be similar for races 4 to 6, 7 to 9 and 10 to 12 with all races to count i.e. this will give a total of up to four results going towards the Daring Challenge Bowl.
- 13.2.4 The Daring Stug Perry Trophy will consist of 8 scheduled races and use a high points system with the winner receiving points equal to the number of starters plus one, second one less and so on, RET one point, DSQ & OCS and otherwise 0 points. The last race sailed on the Sunday of the second weekend will score double points and if all racing is abandoned on the Sunday the points to date shall stand. Three races are required to constitute a series. The scoring system will include 1 discard after 5 races, 2 after 7. This changes RRS 90.3(a) and Appendix A4 Scoring. The results, on a low points system will count towards the CKC, Solent Series and the Daring Challenge Bowl.
- 14. RYA Arbitration, Protests and Requests for Redress**
- 14.1 Arbitration is described on the RYA website (www.rya.org.uk) under Rules Disputes. The exoneration penalty will be a 30% scoring penalty in accordance with RRS 44.3 (c). Arbitration, protests and requests for redress shall be delivered within 90 minutes (60 minutes on the last day of a regatta) of the time of the last boat to finish the last race of the day in her class.
- 14.2 Breaches indicated as (NP) shall not be grounds for protest by a boat. This changes RRS60.1(a). Penalties for breaches indicated as (DP) and a breach of RRS 55 and RRS 40 while **not** racing, may be less than disqualification if the protest committee so decides. Any such penalties will be scored DPI.

15. Results

Results will be posted on the club notice board or website or WhatsApp as soon as practical after the last boat has finished.

16. Prizegiving Dates

Club prizegiving dates for their 2025 Cowes Solent Series (CSS) fixed shoreline races are planned as follows:

Household Division YC	- Sat 19 July at RYS	Royal London YC	- Sat 8 November
Island Sailing Club	- TBA	Royal Thames YC	- TBA
Royal Yacct Squadron	- TBA	Cowes Corinthian YC	- TBA

17. Risk Statement

Rule 3 of the Racing Rules of Sailing states: "The responsibility for a boat's decision to participate in a race or to continue racing is hers alone."

Sailing is by its nature an unpredictable sport and therefore inherently involves an element of risk. By taking part in the event, each competitor agrees and acknowledges that:

- They are aware of the inherent element of risk involved in the sport and accept responsibility for the exposure of themselves, their crew and their boat to such inherent risk whilst taking part in the event;
- They are responsible for the safety of themselves, their crew, their boat and their other property whether afloat or ashore;
- They accept responsibility for any injury, damage or loss to the extent caused by their own actions or omissions;
- Their boat is in good order, equipped to sail in the event and they are fit to participate;
- The provision of a race management team, patrol boats, and other officials and volunteers by the event organiser does not relieve them of their own responsibilities;
- The provision of patrol boat cover is limited to such assistance as is available in Cowes, particularly in extreme weather conditions, as can be practically provided in the circumstances.
- It is their responsibility to familiarise themselves with any risks specific to this venue or this event drawn to their attention in any rules and information produced for the venue or event and to attend any safety briefing held for the event.



Part A Sailing Instructions for Regattas at Cowes 2025

1. Rules

- 1.1** Racing will be governed by the rules as defined in the Notice of Race (NoR). Part B (Start and Finish Lines) are sailing instructions (SIs). Appendix 1 applies to Cowes Keelboat Championship (CKC) and other committee boat races. Diagrams are not sailing instructions.
- 1.2** Boats may use any method of propulsion in accordance with RRS 42.3(h) in an emergency to keep clear of a ship. Such use shall be reported to the race committee within the protest time limit.
- 1.3** If it appears to the race committee, or any appropriate authority, that a boat is failing to comply with the course restrictions it may require that boat is towed to safety and that boat shall retire.

2. Notices and Communication with Competitors

- 2.1** Notices to competitors will be posted on the official notice board at the host club or on the Official CCCA Whats App Group.
- 2.2** The race committee may use VHF exclusively and/or WhatsApp to broadcast information such as committee boat location, change of VHF channels, time checks before the warning signal, courses and the description of laid marks, bow or sail numbers of boats recalled, change of course and oral alterations to sailing instructions made before the warning signal, or during the race if it concerns the time limit, all in accordance with RRS 90.2(c). Races may be conducted using VHF alone and visual signals may not be displayed which changes RRS 25, 26, 27, 29 and 30.
- 2.3** VHF **Channel M1 (37A)** will be used for all shore line races and VHF **Channel 77** will be used for CKC and other committee boat races. Boats should keep radio watch from 30 minutes before the start and throughout the race.

3. Changes to Sailing Instructions

Any change to the sailing instructions will be posted by 0900 on the day it will take effect, except any changes to the schedule of races will be posted by 2000 on the day before it will take effect.

4. Signals Made Ashore

- 4.1** Unless SI 2.2 applies, signals made ashore will be displayed at the host club flagstaff.
- 4.2** Flag AP over AP with two sound signals means racing is postponed and boats are requested not to leave the harbour. This adds to race signals. The warning signal of the first class to start will be made not less than **45 minutes** after one AP is removed with one sound.
- 4.3** When flag Y is displayed ashore, RRS 40 applies at all times while afloat. (DP) Personal flotation devices shall be clearly visible to other boats and to the race committee. This changes the RRS Part 4 preamble. If flag V is displayed boats shall monitor the VHF channel for safety instructions.

5. Schedule of Races

Warning Signal (WS) times are shown below or in any addendum:

WS Flag	Class	Warning Signal Times	
		Saturday	Sunday
O	Daring Class first race`	12:10	12:10 *
R	Other dayboats first race	12:15	12:15
T	Sonar 4 boats or more	12:20	12:20
W	XODs 4 boats or more	12:25	12:25
O	Daring Class second race	ASAP after the first race	No second race ##
R	Other dayboats second race	ASAP after the first race	No second race

On Saturday **only** there will be two races for all classes, except Etchells having more races. If only one race is completed on Saturday, more races may be held on Sunday. On CKC committee boat weekends there will be two races per day plus any feeder race from Cowes to the race area starting at the above scheduled WS times. For **Darings**: * WS at **13:10** on Sun 25 May, **11:10** on Sun 29 Sept. ## Two races on Sun 25 May & Sun 24 Aug.

6. The Course

The course for fixed shore line races will be announced on VHF **channel M1 (37A)** from around 30 minutes before the class warning signal, and will use the two-character identifiers and the required side to leave each mark. The course may also be sent by text or WhatsApp and will include the required side to leave 'L' or round 'R' the mark and 'P' for port or 'S' for starboard.

7. The Start

7.1 Starting Lines General

The club start line in use is defined in Part B. Boats shall start by passing between the inner limit mark, if laid or hung off the committee vessel, and the ODM. If the ODM is further used as a mark of the course, it will be identified by the appropriate two-character identifier or name and shall be left on the required side. If a red or green flag is displayed from a shoreline club flagstaff before the warning signal, boats shall start to the eastward or westward respectively.

7.2 Obstructing the Starting Line

Boats whose warning signal has not been made shall keep clear of the start line and all other boats whose warning signal has been made.

7.3 Individual Recalls

Sail numbers of individually recalled boats may be broadcast on VHF as soon as practical. Delay or failure to broadcast sail numbers shall not be grounds for redress. This changes RRS 62.1(a).

7.4 Late Starting

A boat starting later than fifteen minutes after her starting signal will be scored DNS. This changes RRS A4.

8. Penalty System

Changing RRS 44.1, a boat may take a One-Turn Penalty when she may have broken a rule of Part 2 while racing. However, when she may have broken a rule of Part 2 while in the zone around a mark, other than a starting mark, her penalty shall be a Two-Turns Penalty.

9. The Finish

The finish line in use by the host club is defined in Part B. The last mark of the course will be the designated finishing mark.

10. Time Limit

Unless otherwise amended in writing, or orally in accordance with SI 2.2, the single race a day time limit is 4 hours (2 hours when two races a day and 1.5 hours when more than 2 races a day are scheduled) and the day time limit is 1800 (1700 on the last day of a regatta), whichever is the earlier. Time limits may be altered in accordance with SI 2.2.

11. Retirements

Boats shall notify retirements to the race committee at the earliest opportunity. Boats may use VHF M1 (37A) for shore line races and VHF channel 77 for committee boat races.

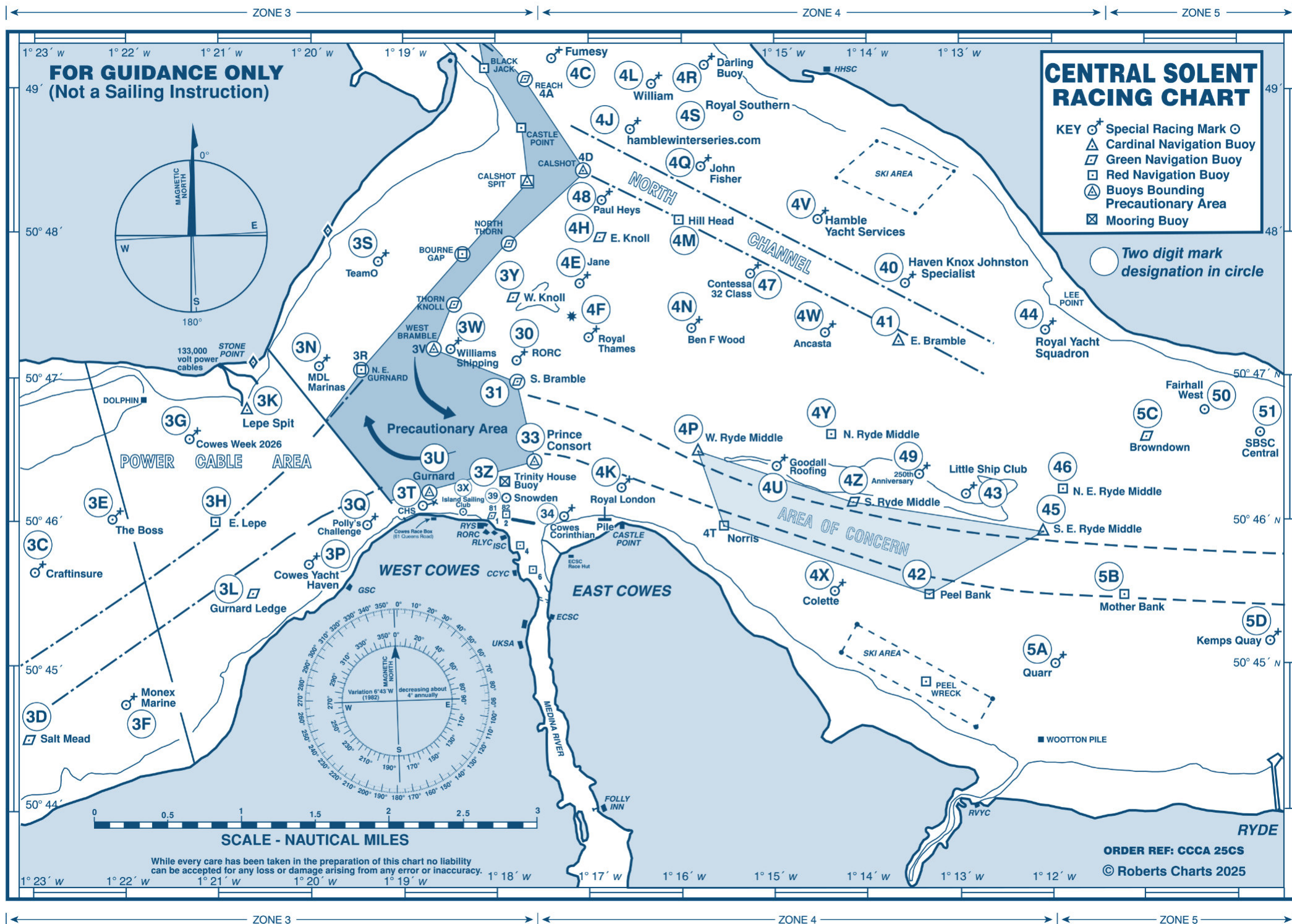


Andrew Cassell Foundation
acfsailing.org

Enabling disabled people to become the most independent sailors they can.
Registered Charity: 1057742



@acfsailing



Appendix 1

CKC and other Committee Boat Races

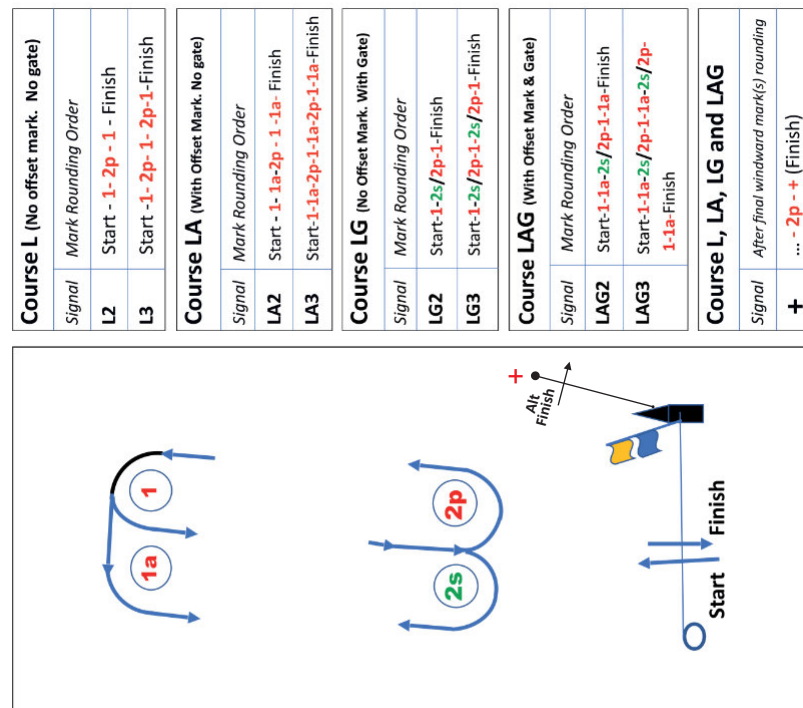
- A. Change to Shore Line:** If, due to weather conditions, racing is to be started from the club shore line instead of a committee boat, flag C may be displayed from the host club flagstaff.
- B. Starting Area:** The starting area will be announced on VHF **channel 77** and may also be promulgated via the WhatsApp Official Group.
- C. The Course**
- C.1** Unless otherwise notified by VHF **channel 77**, the course may be displayed from the committee boat by the code letter(s) and number shown on the page entitled '**Laid Courses**', regardless of the colour of the letter(s) or number displayed. If a fixed racing mark is to be used as part of a course instead of a laid inflatable mark, this will be announced on VHF **channel 77**. The course to be sailed, and the mark rounding order is shown adjacent to the course diagram on the **Laid Courses** page. Unless otherwise announced on VHF or by WhatsApp leave all marks to port except at a gate, if laid.
- C.2** Alternatively, the course may only be announced by VHF **channel 77** using two-character identifiers from the list below and/or marks from the full list shown on another page. In the case of **far** or **near** laid windward marks the colour of these mark(s) will also be announced.
- D. Marks** will generally be specially laid inflated orange, red, yellow, black or yellow/black marks as described on VHF **channel 77**. If fixed or a combination of fixed and laid marks are to be used, two-character identifiers will be displayed or announced on VHF or sent by WhatsApp.
- E. Course Changes:** Changing Race Signals flag 'C' and RRS 33, the position of any laid inflated mark be adjusted by up to approximately plus or minus 10 degrees relative to the previously laid mark(s) position and up to approximately 300 metres to windward or leeward without signalling in accordance with RRS 33 (a) or (b).

Laid Mark Two-Character Identifiers

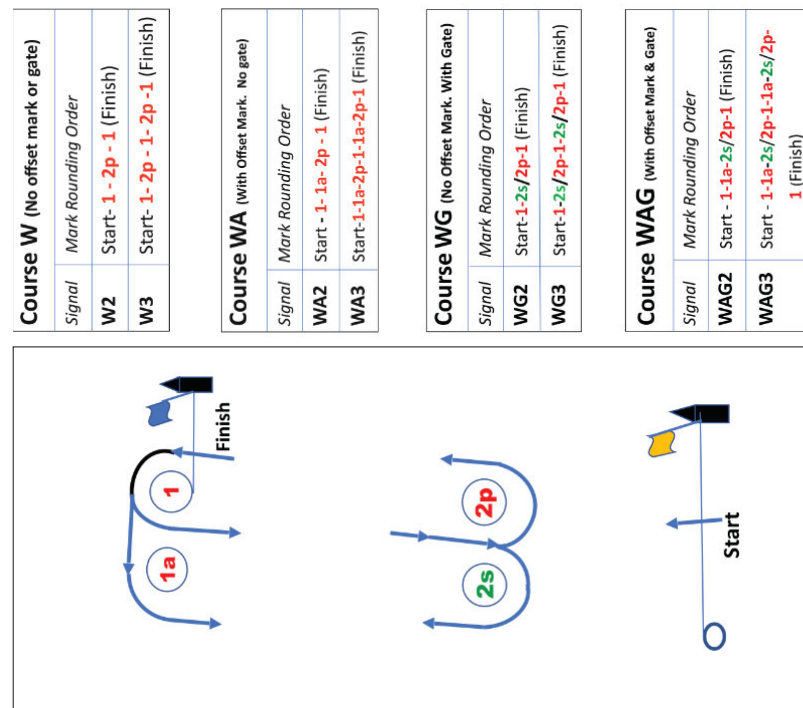
- 9A** Windward Laid Mark
9B Windward Spreader Mark
9C Leeward Laid Mark
9D Leeward Spreader Mark
9E Leeward Gate Above Start Line
9F Leeward Gate Below Start Line
9G Wing Mark
9H Outer Distance Mark
9J Finish Mark
9K Far Windward Mark
9L Far Windward Spreader
9M Near Windward Mark
9N Near Windward Spreader
: (colon) Repeat

Laid Courses

Leeward Finish



Windward Finish





QUOTE YOUR BOAT

WITH OUR ONLINE QUOTE PROGRAMME AT
www.hydesails.co.uk



5 REASONS TO BUY HYDE SAILS

- 1 Hyde have been crafting sails for 60 years
- 2 Your sails are built in our sail loft offering flexibility and control
- 3 We work alongside our suppliers to offer you the best cloth and hardware on the market
- 4 All sails are designed using the latest software and manufactured to the highest exacting standards
- 5 Hyde Sails offer competitive pricing and consistent lead times

Visit us at: The Slipway, Hamble Point Marina. SO31 4JD

sales@hydesails.co.uk | +44 (0)2380 457 779



www.hydesails.com

Start and Finish Lines

Part B Sailing Instructions 2025



Royal London YC Shore Line

The **start line** is the extension of a line from a black and orange board on the RLYC Clubhouse in line with a similar board on The Parade wall. The ODM is **Snowden** (39). No IDM will be laid but if No 1 or 2 harbour buoy (81 or 82) is announced as part of the course, after the start boats shall pass the buoy on the required side. The **finish line** is between the black and orange post on the RLYC clubhouse and either **Snowden** (39) or **Trinity House Buoy** (3Z) according to which is the designated finishing mark.



Island Sailing Club Shore Line



Royal Thames YC Shore Line

The **start line** is the extension of a line through two flagstaffs each bearing a fluorescent orange board with a black cross. The ODM is **Trinity House Buoy** (3Z). No IDM will be laid but if No 1 or 2 harbour buoy (81 or 82) is announced as part of the course, after the start boats shall pass the buoy on the required side. The **finish line** is between the ISC rooftop flagstaff and either **Snowden** (39) or **Trinity House Buoy** (3Z) according to which is the designated finishing mark in the course.



RORC Shore Line

The **start line** is the extension of a line from the RORC flagstaff through a vertical orange staff. The ODM is **Snowden** (39). No IDM will be laid but if No 1 or 2 harbour buoy (81 or 82) is part of the course, after the start boats shall pass the buoy on the required side. The **finish line** is between either the RORC flagstaff or an orange staff and either **Snowden** (39) or **Trinity House Buoy** (3Z) according to which is the designated finishing mark.



Royal Yacht Squadron Shore Line



Household Division YC

The **start line** is the extension of a line from a white line on the orange diamond on the Castle and the RYS flagstaff. The ODM is a laid orange inflated mark (91). The IDM, if laid, will be a small orange buoy. If No 2 harbour buoy is announced as part of the course, after the start boats shall pass the buoy on the required side. The **finish line** is between the RYS flagstaff and the laid orange inflated mark (91).



Cowes Corinthian Yacht Club

Shrape Line

The **start and finish line** is between a staff bearing a flag on a boat positioned on the Shrape and the yellow racing mark No 34 'Cowes Corinthian' or an inflated mark or other mark announced on VHF.

Solent Committee Boat Start and Finish Line

Cowes Keelboat Championship Race No:



The **start line** is between a staff bearing an orange flag on the main committee boat and an ODM which is a laid inflated mark or other fixed mark, if announced on VHF. The IDM, if laid, will be a small inflated mark. The **finish line** is between the staff or halyard displaying a blue flag on a committee boat and the nearby laid ODM or the last mark of the course.

ODM: Outer Distance Mark

IDM: Inner Distance Mark

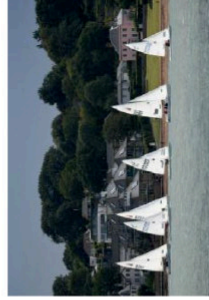
COWES CORINTHIAN YACHT CLUB

welcomes visiting yachtsmen from around the world



Cowes Corinthian - "the friendliest club in Cowes" - has another busy season of Club racing including the famous **Fort's Race** and events organised for other sailing groups, including this year:

Cowes Spring Classics



Contessa 32s

Etchells Ice Bucket

Cowes Flying Fifteen fleet

CCYC is an RYA-accredited Powerboat Training Centre

39 Birmingham Rd Cowes PO31 7BH
+44 (0)1983 296333 office@ccyc.org.uk www.ccyc.org.uk

TOIO

FORCE 5

WATERPROOF

BREATHABLE

DURABLE

ERGONOMIC

REPACKABLE

LIGHTWEIGHT

WARMTH

COMFORT

www.toio.com

cowes@toio.co.uk

Central Solent Course Mark Two Character Identifiers 2025

May only be used as passing marks

3C	Craftinsure	33	Prince Consort	4X	Colette
3D	Salt Mead	34	Cowes Corinthian	4Y	North Ryde Middle
3E	The Boss	39	Snowden	4Z	South Ryde Middle
3F	Monex Marine	4C	Fumesy	40	Haven Knox Johnston Specialist
3G	Cowes Week 2026	4E	Jane	41	East Bramble
3H	East Lepe	4F	Royal Thames	42	Peel Bank
3K	Lepe Spit	4H	East Knoll	43	Little Ship Club
3L	Gurnard Ledge	4J	hamblewinterseries.com	44	Royal Yacht Squadron
3N	MDL Marinas	4K	Royal London	45	S E Ryde Middle
3P	Cowes Yacht Haven	4L	William	46	N E Ryde Middle
3Q	Polly's Challenge	4M	Hill Head	47	Contessa 32 Class
3S	TeamO	4N	Ben F Wood	48	Paul Heys
3T	CHS	4P	West Ryde Middle	49	250 th Anniversary
3U	Gurnard	4Q	John Fisher	5A	Quarr
3W	Williams Shipping	4R	Darling Buoy	5B	Mother Bank
3X	Island Sailing Club	4S	Royal Southern	5C	Brownlow
3Y	West Knoll	4T	Norris #	5D	Kemps Quay
3Z	Trinity House Buoy	4U	Goodall Roofing	81	No 1 Cowes Harbour Buoy #
30	RORC	4V	Hamble Yacht Services	82	No 2 Cowes Harbour Buoy #
31	South Bramble	4W	Ancasta	91	RYS Laid Outer Distance Mark

Your home away from home



EAST COWES

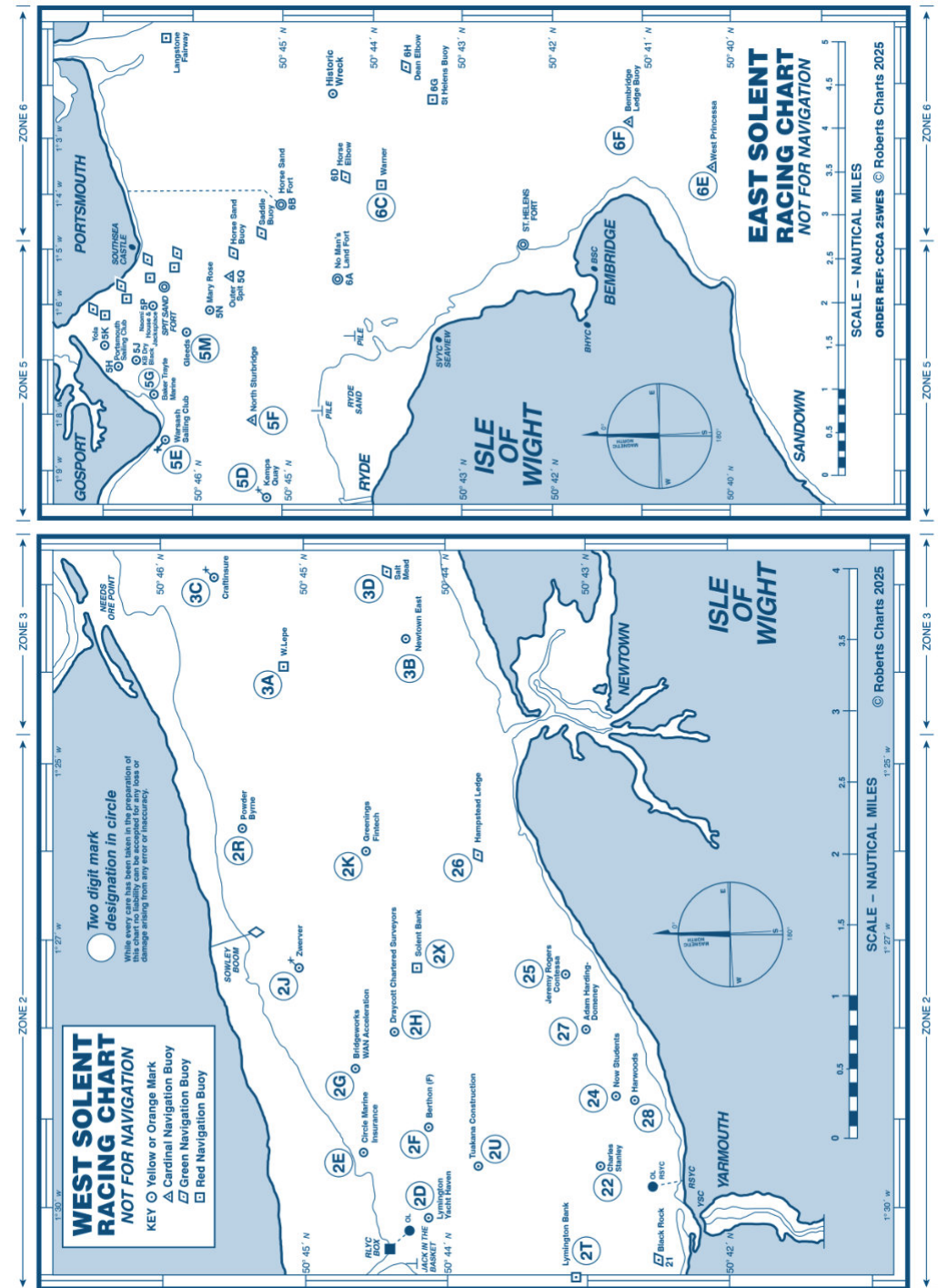
MARINA

Whether you want to get in on the island action or simply sit back and sundown.

For more information about our facilities, call us on 01983 293983 or email eastcowes@boatfolk.co.uk



by **boatfolk**



COWES YACHT HAVEN

WELCOMES YOU TO COWES

MARINA • DRY SAILING • REGATTA CENTRE

The perfect location for your business and leisure activities.

Our facilities include:

- 260 visitor berths
- Shower, toilets & washing machine facilities
- Chandlery & yacht businesses on site
- Full boatyard services - lifting, launch, storage

All within a few minutes' walk of the shops, bars, restaurants and clubs along Cowes High Street and the Redjet ferry terminal.

For further details or to book a berth call 01983 299 975 or call VHF Ch 80 on arrival.



Follow us @cowesyachthaven

cowesyachthaven.com

COWES TOWN
WATERFRONT TRUST

REGISTERED CHARITY No. 1019760

Solent Two-Character Racing Marks 2025				
Zone 2 West Solent				
ID	Name	Colour	Lat N	Long W
2A	Embley School	Y	50 42.77	01 32.43
2B	Dunford Construction	Y	50 43.38	01 31.54
2C	Colten	Y	50 43.83	01 30.86
2D	Lymington Yacht Haven	Y	50 44.17	01 30.10
2E	Circle Marine Insurance	Y	50 44.49	01 29.32
2F	Berthon	Y	50 44.20	01 29.22
2G	Bridgeworks WAN Acceleration	Y	50 44.79	01 28.47
2H	Draycott Chartered Surveyors	Y	50 44.30	01 28.16
2J	Zwerver	Y	50 45.11	01 27.34
2K	Greenings Fintech	Y	50 44.83	01 26.09
2L	Royal Lymington YC	Y	50 43.14	01 31.95
2R	Powder Byrne	Y	50 45.43	01 25.89
2T	Lymington Bank	R	50 43.10	01 30.85
2U	Tuakana Construction	R	50 43.67	01 29.50
2X	Solent Bank	BY	50 44.23	01 27.37
20	Sconce	G	50 42.53	01 31.43
21	Black Rock	Y	50 42.57	01 30.59
22	Charles Stanley	Y	50 42.86	01 29.40
24	Now Students	Y	50 42.86	01 28.42
25	Jeremy Rogers Contessa	Y	50 43.15	01 28.49
26	Hamstead Ledge	G	50 43.87	01 26.18
27	Adam Harding-Domeney	Y	50 42.97	01 28.16
28	Harwoods	Y	50 42.73	01 28.69
Zone 3 Mid Solent (W)				
3A	West Lepe	R	50 45.24	01 24.09
3B	Newtown East	Y	50 44.36	01 23.80
3C	craftinsure.com	Y	50 45.64	01 23.12
3D	Salt Mead	G	50 44.51	01 23.04
3E	The Boss	Y	50 46.13	01 22.19
3F	Elephant Boatyard	Y	50 44.72	01 21.95
3G	Cowes Week 2026	Y	50 46.58	01 21.46
3H	East Lepe	R	50 45.93	01 21.07
3K	Lepe Spit	YB	50 46.78	01 20.64
3L	Gurnard Ledge	G	50 45.51	01 20.59
3N	Royal Cork	Y	50 47.07	01 19.88
3P	Cowes Yacht Haven	Y	50 45.68	01 19.98
3Q	Polly's Challenge	Y	50 45.97	01 19.45
3R	North East Gurnard #	R	50 47.06	01 19.42
3S	TeamO	Y	50 47.81	01 19.25
3T	CHS	Y	50 46.10	01 18.87
3U	Gurnard	BY	50 46.22	01 18.84
3V	West Bramble #	YBY	50 47.20	01 18.65
3W	Williams Shipping	Y	50 47.20	01 18.55
3X	Island Sailing Club	Y	50 46.10	01 18.43
3Y	West Knoll	Y	50 47.43	01 17.84
3Z	Trinity House Buoy	Y	50 46.31	01 17.75
30	RORC	Y	50 47.12	01 17.72
31	South Bramble	G	50 46.98	01 17.72
33	Prince Consort	BY	50 46.41	01 17.56
34	Cowes Corinthian	Y	50 46.15	01 17.20
39	Snowden	Y	50 46.20	01 17.75
Zone 4 Mid Solent (E)				
4A	Reach #	G	50 49.05	01 17.65
4B	Coronation	Y	50 49.55	01 17.62
4C	Fumesy	Y	50 49.21	01 17.46
4D	Calshot #	BY	50 48.44	01 17.03
4E	Jane	Y	50 47.67	01 17.00
4F	Royal Thames	Y	50 47.20	01 17.00
4G	Chieftain Training	Y	50 49.45	01 16.91
4H	East Knoll	G	50 47.96	01 16.83
4J	hamblewinterseries.com	Y	50 48.63	01 16.56
4K	Royal London	Y	50 46.15	01 16.65
4L	William	Y	50 49.03	01 16.49
Zone 4 Mid Solent (E continued)				
4M	Hill Head	R	50 48.07	01 16.00
4N	Ben F Wood	Y	50 47.27	01 15.90
4P	West Ryde Middle	YBY	50 46.48	01 15.79
4Q	John Fisher	Y	50 48.46	01 15.72
4R	Darling Buoy	Y	50 49.18	01 15.71
4S	Royal Southern	Y	50 48.86	01 15.43
4T	Norris #	R	50 45.97	01 15.51
4U	Goodall Roofing	Y	50 46.43	01 15.09
4V	Hamble Yacht Services	Y	50 48.13	01 14.64
4W	Ancasta	Y	50 47.33	01 14.59
4X	Colette	Y	50 45.53	01 14.39
4Y	North Ryde Middle	R	50 46.61	01 14.31
4Z	South Ryde Middle	G	50 46.13	01 14.16
40	Haven Knox Johnston Specialist	Y	50 47.66	01 13.65
41	East Bramble	BYB	50 47.23	01 13.64
42	Peel Bank	R	50 45.49	01 13.35
43	Little Ship Club	Y	50 46.16	01 13.09
44	Royal Yacht Squadron	Y	50 47.31	01 12.10
45	South East Ryde Middle	YB	50 45.93	01 12.10
46	North East Ryde Middle	R	50 46.21	01 11.88
47	Contessa 32 Class	Y	50 47.70	01 15.25
48	Paul Heys	Y	50 48.21	01 16.68
49	250th Anniversary	Y	50 46.40	01 13.58
Zone 5 East Solent				
5A	Quarr	Y	50 45.03	01 11.89
5B	Mother Bank	R	50 45.49	01 11.21
5C	Browndown	G	50 46.57	01 10.95
5D	Kemp's Quay	Y	50 45.18	01 09.65
5E	Warsash Sailing Club	Y	50 46.26	01 08.76
5F	North Sturbridge	BY	50 45.33	01 08.23
5G	Baker Trayte Marine	Y	50 46.42	01 07.90
5H	Potsmouth SC	Y	50 46.82	01 07.35
5J	KB Dry Stack	Y	50 46.61	01 07.29
5K	Yola	Y	50 47.08	01 06.78
5M	Gleeds	Y	50 46.11	01 06.52
5N	Mary Rose	Y	50 45.80	01 06.20
5P	Naomi House & Jacksplace	Y	50 46.36	01 06.08
Zone 6 Eastern Approaches				
6A	No Man's Land Fort	B	50 44.40	01 05.70
6C	Warner	R	50 43.87	01 03.99
6E	West Princessa	YBY	50 40.16	01 03.65
6F	Bembridge Ledge Buoy	BYB	50 41.15	01 02.81
6L	Winner	YB	50 45.10	01 00.10
6M	Nab End	R	50 42.63	00 59.49
6R	Nab Tower	B	50 40.08	00 57.15
Zone 8 Local Fixed Marks				
81	No 1 Cowes Harbour #	G	50 46.07	01 18.04
82	No 2 Cowes Harbour #	R	50 46.07	01 17.70
Zone 9 Laid Marks and Symbols				
9A	Windward Laid Mark	+	Finish Mark	
9B	Windward Spreader Mark	:	Repeat	
9C	Leeward Laid Mark			
9D	Leeward Spreader Mark			
9E	Leeward Gate Above Start Line			
9F	Leeward Gate Below Start Line			
9G	Wing Mark			
9H	Outer Distance Mark			
9J	Finish Mark			
9K	Far Windward Mark			
9L	Far Windward Spreader			
9M	Near Windward Mark			
9N	Near Windward Spreader			
9I	RYS Laid Outer Distance Mark			

May only be used as passing mark . Not for rounding.

© CCA 2025



DISCOVER ASIA

On a private tailor-made tour, arranged by experts



Visit bambootravel.co.uk
for inspiration;
or call 020 7720 9285

