



**ROYAL YACHT SQUADRON
RACE TRAINING
8 - 10 APRIL 2025**

**ORGANIZING AUTHORITY
ROYAL YACHT SQUADRON
COWES**

NOTICE OF RACE

1. RULES

- 1.1. The event is governed by the *rules* as defined in *The Racing Rules of Sailing* (RRS).
- 1.2. Notices to Mariners for the Ports of [Southampton](#), [Portsmouth](#) and [Cowes](#) apply.
- 1.3. The J70 Class Rules.
- 1.4. Rule 22 of the Rules for the Government of the Royal Yacht Squadron (RYS).
- 1.5. RRS 40.1 shall apply - a Personal Floatation Device (PFD) shall be worn at all times, except when adjusting clothing.
- 1.6. All crew shall submit the Sailor's Declaration 18 hrs prior to the advertised "Depart for Race Area": <https://form.jotform.com/211212576623954>

2. SAILING INSTRUCTIONS

- 2.1. Sailing Instructions (SIs) will be available from 31 March 2025 at www.rys.org.uk, with copies available at the Briefing.

3. COMMUNICATION

- 3.1. The Online Official Noticeboard (ONB) will be online at the RYS website at: www.rys.org.uk, with the Race Office at the RYS.
- 3.2. All boats shall carry a Marine VHF Radio capable of receiving all normal International VHF Channels. All VHF communication shall be on International VHF channels.
- 3.3. On the water, the Race Committee (RC) will make courtesy broadcasts to competitors on VHF Radio. The VHF Channel used will be stated in the SIs.
- 3.4. In addition to VHF communication, the RC intends to use a Telegram Group to communicate with competitors. A "QR code" in a "QR Code & Link" will be included in the SIs.
- 3.5. [DP] While racing, from the First Warning Signal until the end of the last race of the day, except in an emergency, a boat shall not make voice or data transmissions and shall not receive voice or data communications that are not available to all boats.

4. ELIGIBILITY AND ENTRY

- 4.1. Those invited to participate.

5. FEES

- 5.1. Does not apply.

6. CREW LIMITATION

- 6.1. Crew numbers including instructors shall be limited to five (5) per J70.

7. ADVERTISING

- 7.1. Boats may be required to display advertising chosen and supplied by the Organizing Authority (OA).

8. QUALIFYING SERIES AND FINAL SERIES

- 8.1. Does not apply.

9. SCHEDULE

- 9.1. The intention of the RC is to run a number of races during the day from the Committee Vessel (CV). VHF Call sign CASTLE TWO.
- 9.2. Pre-race practice will be included, and boats will have the opportunity to practise starts, boat handling and manoeuvres.
- 9.3. Times in this NoR are for BST (UT + 1). Indicative Tide Times are for Portsmouth.

DAY HWP (BST)	TIMINGS	NOTES
Tue 8 April HW 0950 3.7m	1200 1245 1330 1400 1630 1730 1930 2000	Arrival RYS Lunch RYS Platform Briefing Depart for Race Area Practice starts & races Race to RYS Line Tea & Debrief RYS Pavilion Talk RYS Platform Supper RYS Platform
Tue 9 April HW 1107 3.9m	0730 0815 0900 1100 1530 1700 1930	Breakfast RYS Pavilion Briefing Depart for Race Area First Warning Signal Race to RYS Line Tea & Debrief RYS Pavilion Supper RYS Platform
Wed 10 April HW 1146 4.1m	0730 0815 0845 1010 1330	Breakfast RYS Platform Briefing Depart for Race Area First Warning Signal Lunch RYS Pavilion Certificate Presentation

10. EQUIPMENT INSPECTION

- 10.1. Does not apply.

11. CLOTHING AND EQUIPMENT

- 11.1. Does not apply.

12. VENUE

- 12.1. The venue for the event is Cowes in the Isle of Wight.
- 12.2. Racing will take place in the Solent and adjacent waters. See Addendum A – Solent Chartlet.

13. COURSES

- 13.1. Courses to be sailed will be a predominantly Windward / Leeward configuration, as described in the Sis.
- 13.2. The final race of each day may be a “Round the Cans” race with the course announced over VHF using the Solent Cruising & Racing Association (SCRA) Two Character Codes with the Finish on the RYS Line. See Addendum A.

14. PENALTY SYSTEM

- 14.1. RRS 44.1 is changed so that the Two-Turns Penalty is replaced by the One-Turn Penalty.
- 14.2. Where an offset leg at the windward mark is part of the course, penalties while in the zone of the windward mark or on the offset leg shall be delayed and taken at the first reasonable opportunity on the downwind leg. This change is added to RRS 44.2.

15. SCORING

- 15.1. The Low Point System of Appendix A will apply.
- 15.2. One (1) race shall be completed to constitute a series.

16. SUPPORT PERSON VESSELS

- 16.1. All support boats shall carry marine VHF radios and comply with RRS 37 ‘Search and Rescue Instructions’.

17. CHARTERED OR LOANED BOATS

- 17.1. Boats will be provided by the OA.

18. BERTHING

- 18.1. Berthing will be in the RYS Haven.
- 18.2. Boats shall be returned to the RYS Haven after the finish of racing and derigged, as directed.

19. HAUL OUT RESTRICTIONS

- 19.1. Does not apply.

20. DIVING EQUIPMENT AND PLASTIC POOLS

- 20.1. Does not apply.

21. DATA PROTECTION

1. The personal information you provide to the OA will be used to facilitate your participation in the event. If you have agreed to be bound by the RRS and the other rules that govern the Events (the rules), the legal basis for processing that personal information is contract. If you are not bound by the rules, the legal basis for processing that personal information is legitimate interest. Your personal information will be stored and used in accordance with the OA’s privacy policy. When required by the rules, personal information may be shared with the RYA, your national authority and/or World Sailing. The results of the event and the outcome of any hearing or appeal may be published.
- 21.1. Competitors automatically grant to the OA, without payment, the right in perpetuity to make, use and show any motion pictures, still pictures and live, taped or filmed

television of or relating to the event provided that they do not infringe the privacy rights of participants.

- 21.2. The Royal Yacht Squadron (RYS) and Royal Yacht Squadron Limited (RYSL) Armorial, Burgees and all other associated logos shall not be used by any club or individual without the prior written permission of RYS.

22. RISK STATEMENT

- 22.1. Rule 3 of the RRS states: “The responsibility for a boat’s decision to participate in a race or to continue racing is hers alone.”
- 22.2. Sailing is by its nature an unpredictable sport and therefore involves an element of risk. By taking part in the event, each competitor agrees and acknowledges that:
- (a) they are aware of the inherent element of risk involved in the sport and accept responsibility for the exposure of themselves, their crew and their boat to such inherent risk whilst taking part in the event;
 - (b) they are responsible for the safety of themselves, their crew, their boat and their other property whether afloat or ashore;
 - (c) they accept responsibility for any injury, damage or loss to the extent caused by their own actions or omissions;
 - (d) their boat is in good order, equipped to sail in the event and they are fit to participate;
 - (e) the provision of a race management team, patrol boats, and other officials and volunteers by the event organiser does not relieve them of their own responsibilities;
 - (f) the provision of patrol boat cover is limited to such assistance, particularly in extreme weather conditions, as can be practicably provided in the circumstances;
 - (g) it is their responsibility to familiarize themselves with any risks specific to this venue or this event drawn to their attention in any rules and information produced for the venue or event and to attend any safety briefing held for the event;

23. INSURANCE

- 23.1. RYS insures the boat for the period of hire against fire and all usual marine and collision risks to include third party risks to such an extent as is required by law and in addition as RYS shall deem appropriate.
- 23.2. A copy of the Insurance Policy is available for inspection, if required.

24. PRIZES

- 24.1. The Polly Birch Trophy will be awarded to the top student.
- 24.2. Certificates will be awarded at the Prizegiving.

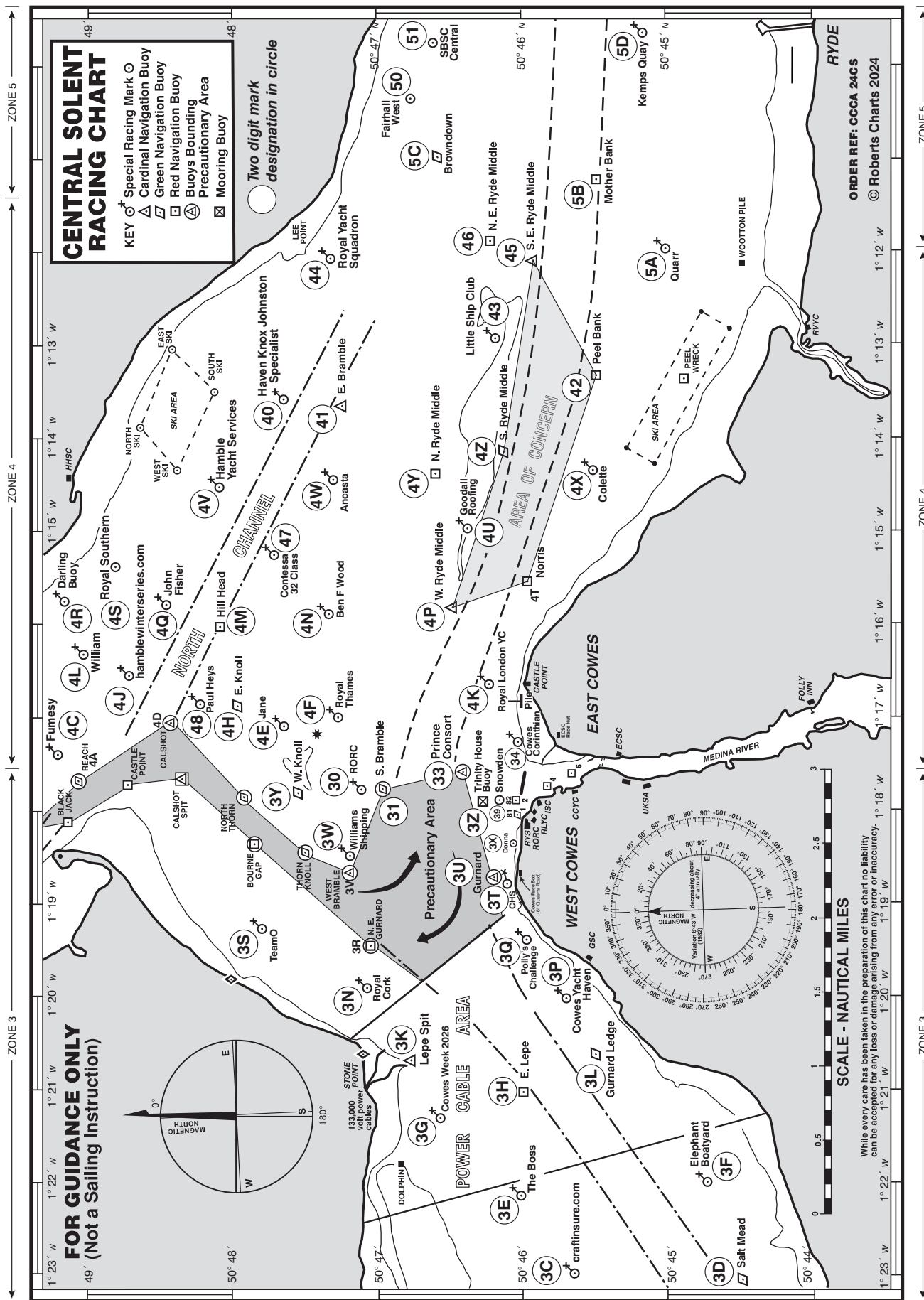
25. FURTHER INFORMATION

- 25.1. Further information will be available on the RYS website. www.rys.org.uk

NOTICE OF RACE ENDS

ADDENDUM A

Chartlet of the Racing Area showing the Solent Two Character Codes for racing "around the cans": **TO BE UPDATED 28 FEBRUARY**



All correspondence should be directed to:
The Royal Yacht Squadron, The Castle, Cowes, UK, PO31 7QT. Tel: 01983 292191, Email: mail@rys.org.uk