

QUARTER TON CUP 5 – 7 September 2022

ORGANISING AUTHORITY ROYAL YACHT SQUADRON

NOTICE OF RACE

1. RULES

- 1.1 The event is governed by the rules as defined in the Racing Rules of Sailing (RRS).
- 1.2 World Sailing Offshore Special Regulations for Inshore Racing (Appendix B) shall apply.
- 1.3 Parts A, B and C of the IRC Rules shall apply.
- 1.4 For breaches of any rule, other than a rule of RRS Parts 1 and 2, the protest committee may decide the penalty which may be less than DSQ.
- 1.5 Notices to Mariners for the Ports of [Southampton](#), [Portsmouth](#) and [Cowes](#).
- 1.6 All crews are required to follow all the latest Covid-19 guidance from NHS England and the Government.

2. SAILING INSTRUCTIONS

- 2.1 The sailing instructions (SIs) will be available on the RYS website by 26 August 2022. www.rys.org.uk

3. COMMUNICATION

- 3.1 The ONB is located on the RYS website at: www.rys.org.uk. There is no physical ONB.
- 3.2 All boats shall carry a VHF radio capable of receiving all normal international VHF channels. All VHF communication shall be on international VHF channels.
- 3.3 On the water the race committee will make courtesy broadcasts to competitors on VHF radio. The channel will be stated in the SIs.
- 3.4 From the first Warning Signal until the end of the last race of the day, except in an emergency, a boat shall not make voice or data transmissions and shall not receive voice or data communication that is not available to all boats.
- 3.5 In addition to VHF communication, the race committee intends using a "Telegram" group to communicate with competitors and a "QR code & Link" in Addendum C of this NoR is available with details of how to join. Failure to receive information broadcast using "Telegram" will not be grounds for redress.

4. ELIGIBILITY AND ENTRY

- 4.1 The event is open to boats of the Quarter Ton Class.
- 4.2 Eligible boats may enter by completing the [online entry form](#) on the RYS Website and paying the entry fee. www.rys.org.uk.
- 4.3 Any boat that wishes to be eligible for the Corinthian Prize shall submit a written statement to the Race Committee no later than 1800 on 4 September that all participating crew are amateurs. For the purposes of clarification, they should conform to the World Sailing Competitor Categorisation description for Group 1. If no such statement is received, the boat shall not be eligible for the Corinthian Prize.

5. FEES

- 5.1 The entry fee is £350 per boat and must be received before 1 September. This includes three days of racing but does not include berthing or social events.

6. CREW LIMITATIONS

- 6.1 There are no World Sailing Sailor Classification restrictions.

7. ADVERTISING

- 7.1 Advertising is permitted in accordance with Class Rules and World Sailing Regulation 20.
- 7.2 Boats may be required to display advertising chosen and supplied by the organising authority.

8. QUALIFYING SERIES AND FINAL SERIES

Not applicable.

9. SCHEDULE OF RACING

	Mon 5 Sep	Tue 6 Sep	Wed 7 Sep
HW P'mouth BST	0622 3.84m	0759 3.80m	0928 3.98m
Briefing by WhatsApp	1000	0900	0900
First warning signal	1155	1025	1025
Races per day Scheduled	3	3	2
Races per day Maximum	4	4	3
Prizegiving – RYS Pavilion			ASAP after racing

- 9.1 An additional race may be sailed each day in order to complete the programme because of weather or other reasons. Additional races will be advised in the "Telegram" briefing on the affected day.
- 9.2 On the last scheduled day of racing, no warning signal will be made after 1500.

10. EQUIPMENT INSPECTION

- 10.1 Each boat shall be in possession of a valid endorsed IRC Rating Certificate.

10.2 There will be no official crew weigh-in. This changes Class Rule 5.

10.3 Boats may be inspected at any time.

11. CLOTHING AND EQUIPMENT

Not applicable.

12. VENUE

12.1 Racing will take place from a committee vessel in the Central and Eastern Solent.

12.2 The approximate position of the Committee Vessel will be announced by VHF radio Ch 05 and on "Telegram" (see NoR 3.5 & Addendum C) using the Solent Two Character Codes.

13. COURSES

13.1 The format for racing will be windward/leeward courses. See Addendum A.

13.2 Target time for each race is 50 minutes.

13.3 The race committee intend to run courses using laid marks.

13.4 A chartlet to help boats locate the position of the committee vessel using the Solent Two Character Codes is attached. See Addendum B.

14. PENALTY SYSTEM

14.1 RRS Rule 44.1 is changed so that the Two-Turns Penalty is replaced by the One-Turn Penalty.

15. SCORING

15.1 Three races are required to be completed to constitute a series.

15.2 When fewer than six races have been completed, a boat's series score will be the total of her race scores.

15.3 When six or more races have been completed, a boat's score will be the total of her race scores excluding her worst score.

16. SUPPORT PERSON VESSELS

16.1 All support vessels must carry a marine VHF radio and comply with RRS 37 'Search and rescue Instructions'.

16.2 Support vessels shall stay outside areas where boats are racing from the time of the preparatory signal for each start thereafter until all boats have finished or retired or the Race Committee signals a postponement or abandonment.

17. CHARTERED OR LOANED BOATS

Not applicable.

18. BERTHING

18.1 Event berthing is the responsibility of each boat and is not included in the entry fee. There will be a limited number of berths at the RYS Haven at a cost of £36 per night, to be allocated on a "first come, first served" basis when settling

entry fees. Otherwise, visiting boats may contact [Coves Yacht Haven](#) or [Shepards Wharf Marina](#) for berthing reservations.

19. HAUL OUT RESTRICTIONS

19.1 All boats shall be afloat by 1800 the day before the first series race.

19.2 Boats shall not be hauled out during the event except with and according to the terms of prior written permission of the race committee.

20. DIVING EQUIPMENT AND PLASTIC POOLS

20.1 Underwater breathing apparatus and plastic pools or their equivalent shall not be used around competing boats between the preparatory signal of the first race and the end of the event.

20.2 Keelboats shall not be cleaned below the waterline by any means between the preparatory signal of the first race and the end of the event.

21. DATA PROTECTION

21.1 The Royal Yacht Squadron, in compliance with the General Data Protection Regulations 2018 (GDPR), will use information provided by competitors for the purposes of RYS event management only. This data will be held in compliance with the GDPR and will not be shared with any third parties or used for marketing purposes other than contacting competitors by email, post, SMS and telephone with information regarding this event or future events. Competitors will be required to provide their specific consent to this on their entry form.

21.2 Competitors automatically grant to the Organising Authority, without payment, the right in perpetuity to make, use and show any motion pictures, still pictures and live, taped or filmed television of or relating to the event provided that they do not infringe the privacy rights of participants.

21.3 The Royal Yacht Squadron (RYS) and Royal Yacht Squadron Racing (RYSR) Armorial, Burgees and all other associated logos shall not be used by any club or individual without the prior written permission of the RYS.

22. RISK STATEMENT

22.1 RRS3 states: "The responsibility for a boat's decision to participate in a race or to continue racing is hers alone."

22.2 Sailing is by its nature an unpredictable sport and therefore involves an element of risk. By taking part in the event, each competitor agrees and acknowledges that:

(a) They are aware of the inherent element of risk involved in the sport and accept responsibility for the exposure of themselves, their crew and their boat to such inherent risk whilst taking part in the event;

(b) They are responsible for the safety of themselves, their crew, their boat and their other property whether afloat or ashore;

(c) They accept responsibility for any injury, damage or loss to the extent caused by their own actions or omissions;

- (d) Their boat is in good order, equipped to sail in the event and they are fit to participate;
- (e) The provision of a race management team, patrol boats, and other officials and volunteers by the event organiser does not relieve them of their own responsibilities;
- (f) The provision of patrol boat cover is limited to such assistance, particularly in extreme weather conditions, as can be practically provided in the circumstances;
- (g) It is their responsibility to familiarise themselves with any risks specific to this venue or this event drawn to their attention in any rules and information produced for the venue or event and to attend any competitor or safety briefing held for the event;
- (h) They are responsible for ensuring that their boat is equipped and seaworthy so as to be able to face extremes of weather; that there is a crew sufficient in number, experience and fitness to withstand such weather; and that the safety equipment is properly maintained, stowed and in date and is familiar to the crew.

23. INSURANCE

- 23.1 Each participating boat shall be insured with valid third-party liability insurance with a minimum cover of £3 million per incident or the equivalent.

24. PRIZES

- (a) The Quarter Ton Cup to the winner of the Open Division.
- (b) The Corinthian Trophy to the winner of the Corinthian Division.

Other trophies include the Roger Swinney Trophy, the Kemp Plate, the Walking Stick and the Concours d'Elegance. The SIs will provide further details.

25. FURTHER INFORMATION

- 25.1 Further information requests or completed entries should be sent to the address below.

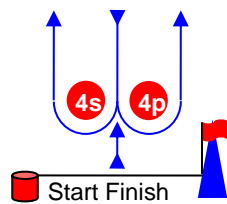
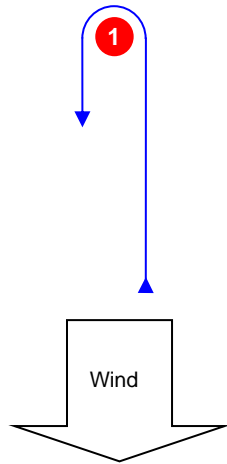
26. SOCIAL ARRANGEMENTS

Further details regarding social arrangements will be posted on the [RYS Website](#) as soon as they are confirmed. www.rys.org.uk.

ADDENDUM A

Course Illustrations – Windward Leeward

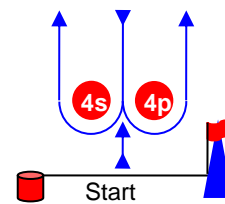
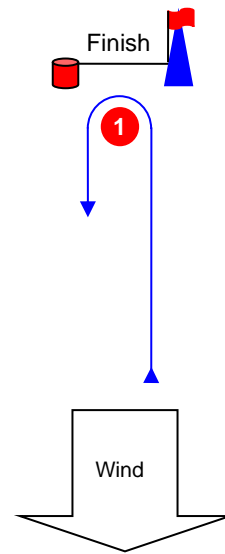
L



Course: Leeward finish

Signal	Mark Rounding Order
L2	Start – 1 – 4s/4p – 1 – Finish
L3	Start – 1 – 4s/4p – 1 – 4s/4p – 1 – Finish
L4	Start – 1 – 4s/4p – 1 – 4s/4p – 1 – 4s/4p – 1 – Finish

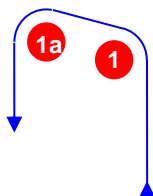
W



Course: Windward Finish

Signal	Mark Rounding Order
W2	Start – 1 – 4s/4p – Finish
W3	Start – 1 – 4s/4p – 1 – 4s/4p – Finish
W4	Start – 1 – 4s/4p – 1 – 4s/4p – 1 – 4s/4p – Finish

LA / WA

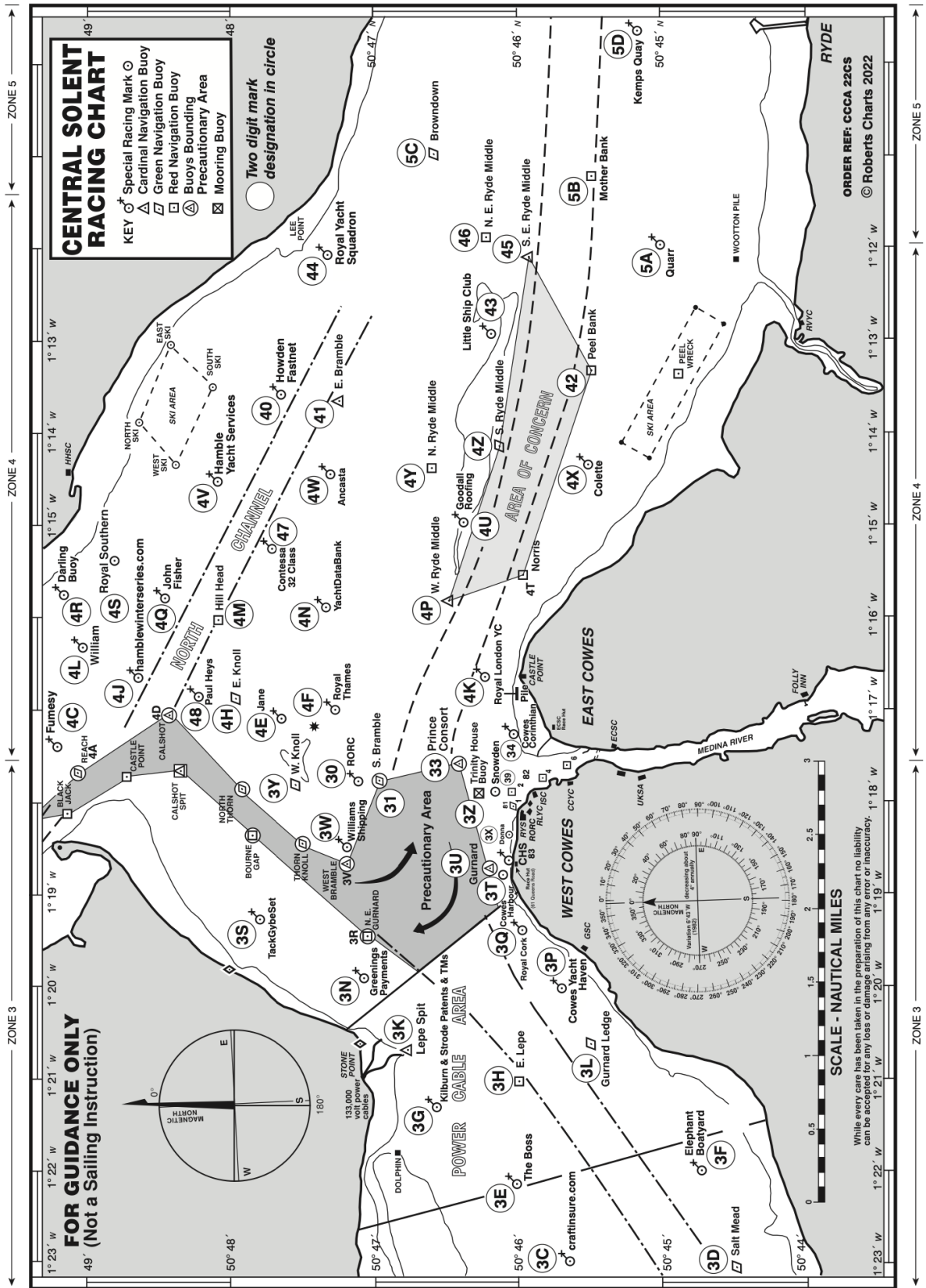


Course: Windward/leeward with offset mark 1a

Signal	Mark Rounding Order
LA2	Start – 1 – 1a – 4s/4p – 1 – 1a – Finish
LA3	Start – 1 – 1a – 4s/4p – 1 – 1a – 4s/4p – 1 – 1a – Finish
LA4	Start – 1 – 1a – 4s/4p – 1 – 1a – 4s/4p – 1 – 1a – 4s/4p – 1 – 1a – Finish
WA2	Start – 1 – 1a – 4s/4p – Finish
WA3	Start – 1 – 1a – 4s/4p – 1 – 1a – 4s/4p – Finish
WA4	Start – 1 – 1a – 4s/4p – 1 – 1a – 4s/4p – 1 – 1a – 4s/4p – Finish

ADDENDUM B

See below a chartlet of the Racing area and SCRA Two Character Codes for racing marks.



All correspondence should be directed to:

The Royal Yacht Squadron | The Castle | Cowes | UK | PO31 7QT. Tel: +44 (0)1983 292191. Email: mail@rys.org.uk

ADDENDUM C



Telegram

We have set up an official [Telegram](#) group for receiving general information from the Race Office.

If you do not already have the Telegram app installed on your device, please follow the instructions below:

- **Apple iPhones** – download and install via the App Store.
<https://apps.apple.com/app/telegram-messenger/id686449807>
- **Android Phones** – download and install via the Google Play Store.
<https://play.google.com/store/apps/details?id=org.telegram.messenger>

To join the Telegram group [please use this link](#) or scan the QR code below:

