

**ROYAL YACHT SQUADRON  
COMMODORE'S INVITATIONAL  
REGATTA  
2 – 4 JUNE 2025**

**ORGANISING AUTHORITY  
ROYAL YACHT SQUADRON  
NOTICE OF RACE**

*The notation '[NP]' in a rule means that a boat may not protest another boat for breaking that rule. This changes RRS 60.1(a).*

**1. RULES**

- 1.1 The event is governed by the rules as defined in the Racing Rules of Sailing (RRS).  
1.2 [DP] The Equipment Rules of Sailing (ERS).  
1.3 Notices to Mariners for the Ports of [Southampton](#), [Portsmouth](#) and [Cowes](#) apply.

**2. SAILING INSTRUCTIONS**

- 2.1 The Sailing Instructions (SIs) will be available on the RYS website by 23 May 2025. ([www.rys.org.uk](http://www.rys.org.uk))

**3. COMMUNICATION**

- 3.1 The Official Notice Board (ONB) will be online at ([www.rys.org.uk](http://www.rys.org.uk)) and the Race Office will be at the Royal Yacht Squadron (RYS).  
3.2 All boats shall carry a Marine VHF Radio capable of receiving all normal International VHF Channels. All VHF communication with the Race Committee (RC) shall be on International VHF channels.  
3.3 In addition to VHF communication, the RC may use a Telegram Group to communicate with competitors and a "QR code & Link" will be included in the SIs. Failure to receive information broadcast using Telegram will not be grounds for redress.

**4. ELIGIBILITY AND ENTRY**

- 4.1 The regatta is open to invited clubs and their representative teams.  
4.2 [DP] Representative teams shall be **members, associate members** or similar of the invited club and teams should

include, where possible, at least **one crew member of each gender and one person under 26 years of age**.

- 4.3 [DP] Details of team/crew and completed entry forms should be returned by 23 May 2025.  
4.4 Entries shall not be open to competitors and support persons holding only Russian or Belarussian nationality or a boat that is registered with or a member of the National Association in those countries. The Organising Authority (OA) may amend this rule following any further World Sailing decisions on the situation with Russia and Belarus.

**5. FEES**

- 5.1 Each club is invited to send a crew of four (4) and the cost per sailor will be £310.00 to include the J70 charter fee, berthing fee, race management fees and all meals.  
5.2 Supporters are also welcome and will only be charged for meals.  
5.3 Accommodation will be an additional cost.  
5.4 A spectator boat will be provided.  
5.5 Each charterer/team will be responsible for the insurance damage excess of £1,000 per boat per incident.

**6. CREW LIMITATIONS**

- 6.1 A parental (or guardian) consent form and declaration, available on ([www.rys.org.uk](http://www.rys.org.uk)) shall be submitted for crew under 18 years of age.

**7. ADVERTISING**

- 7.1 NOT USED.

**8. QUALIFYING SERIES AND FINAL SERIES**

- 8.1 NOT USED.

**9. SCHEDULE**

- 9.1 The times shown in the table below are UTC plus 1 hour (British Summer Time - BST). Indicative Tide Times are for High Water (HW) Portsmouth.

DAY HWP (BST)	TIME	FIRST WARNING SIGNAL	NOTES
<b>Day 1</b> Mon 2 June HW 0400 – 4.3m HW 1650 - 4.4m	0900-1700 1830  1900		- Registration in RYS. - Competitor Briefing & Opening Reception in the RYS. - Supper in RYS.
<b>Day 2</b> Tue 2 July HW 0450 - 4.1m HW 1740 - 4.2m	0800 0830 0930  ASAP after each finish. 1930	1125	-Breakfast in RYS -Briefing in RYS. -Practice Session. -First Warning Signal - Multiple races.  -Supper in RYS.
<b>Day 3</b> Wed 3 July HW 0550 – 3.9m HW 1830 - 4.1m	0800 0830  ASAP after each finish. 1700	1025	-Breakfast in RYS. -Daily Briefing in RYS. -First Warning Signal. -Multiple races.  -Prizegiving.

All correspondence should be directed to:

The Royal Yacht Squadron, The Castle, Cowes, UK, PO31 7QT. Tel: 01983 292191, Email: [mail@rys.org.uk](mailto:mail@rys.org.uk)

- 9.2 Multiple races will be sailed each day.  
 9.3 On the last day of the event, no Warning Signal will be made after 1500.

## 10. EQUIPMENT INSPECTION

- 10.1 NOT USED.

## 11. CLOTHING AND EQUIPMENT

- 11.1 [DP] Each club **shall bring and display from their back stay their own club burgee**. The burgee shall be not less than 12 inches in the hoist and 15 inches in the fly.

## 12. VENUE

- 12.1 Racing will take place from a Committee Vessel (CV) in the Central and Eastern Solent.  
 12.2 To indicate the general race area a local racing chartlet can be found in Addendum A.

## 13. COURSES

- 13.1 The courses to be sailed will be a mixture of windward/leeward configuration and "racing around the cans" using a mixture of racing marks, navigation marks or laid inflatable marks. Further details will be contained in the SIs.  
 13.2 Round the cans races may finish on the RYS shoreline.

## 14. PENALTY SYSTEM

- 14.1 RRS 44.1 is changed so that the Two-Turns Penalty is replaced by the One-Turn Penalty.  
 14.2 Where an offset leg at the windward mark is part of the course, penalties while in the zone of the windward mark or on the offset leg shall be delayed and taken at the first reasonable opportunity on the downwind leg. This change is added to RRS 44.2.

## 15. SCORING

- 15.1 All races, including windward leeward and round the cans races, will be scored equally using the low points system.  
 15.2 One (1) race is required to be completed to constitute a series.  
 15.3 When fewer than five (5) races have been completed, a boat's series score will be the total of her race scores.  
 15.4 When five (5) or more races have been completed, a boat's series score will be the total of her races excluding her worst score.  
 15.5 When eight (8) or more races have been completed, a boat's series score will be the total of her races excluding her two (2) worst scores.

## 16. SUPPORT PERSON VESSELS

- 16.1 All support person vessels shall carry a marine VHF radio and comply with RRS 37 'Search and Rescue Instructions'.

## 17. CHARTERED OR LOANED BOATS

- 17.1 The regatta will be sailed in J70 boats supplied by the organising authority.

## 18. BERTHING

- 18.1 Event berthing is in the RYS Haven and included in the entry fee.

- 18.2 Boats should be returned to the Haven each day and moored or derigged as directed.

## 19. LAUNCHING AND HAUL OUT RESTRICTIONS

- 19.1 NOT USED.

## 20. DIVING EQUIPMENT AND PLASTIC POOLS

- 20.1 [DP] Underwater breathing apparatus and plastic pools or their equivalent shall not be used around boats between the preparatory signal of the first race and the end of the last race.  
 20.2 [DP] No person shall undertake any swimming, underwater or diving activities of any kind within the harbour without a valid permit to dive from the Cowes Harbour Master or the manager of the marina you wish to dive at. This prohibited activity is legislated under Cowes Harbour Commission General Direction 4.4 & 4.5.  
 20.3 [DP] Competitors may at any time and within the existing marina regulations; scrub the hull using flossing, sponging or mechanical devices as long as no person enters the water.

## 21. DATA PROTECTION

- 21.1 The personal information you provide to the OA will be used to facilitate your participation in the event. If you have agreed to be bound by the RRS and the other rules that govern the Events (the rules), the legal basis for processing that personal information is contract. If you are not bound by the rules, the legal basis for processing that personal information is legitimate interest. Your personal information will be stored and used in accordance with the OA's privacy policy. When required by the rules, personal information may be shared with the RYA, your national authority and/or World Sailing. The results of the event and the outcome of any hearing or appeal may be published.  
 21.2 Competitors automatically grant to the OA, without payment, the right in perpetuity to make, use and show any motion pictures, still pictures and live, taped or filmed television of or relating to the event provided that they do not infringe the privacy rights of participants.  
 21.3 The Royal Yacht Squadron (RYS) and Royal Yacht Squadron Limited (RYSL) Armorial, Burgees and all other associated logos shall not be used by any club or individual without the prior written permission of RYS..

## 22. RISK STATEMENT

- 22.1 Rule 3 of the Racing Rules of Sailing states: "The responsibility for a boat's decision to participate in a race or to continue racing is hers alone."  
 22.2 Sailing is by its nature an unpredictable sport and therefore inherently involves an element of risk. By taking part in the event, each competitor agrees and acknowledges that:  
 (a) They are aware of the inherent element of risk involved in the sport and accept responsibility for the exposure of themselves, their crew and their boat to such inherent risk whilst taking part in the event;  
 (b) They are responsible for the safety of themselves, their crew, their boat and their other property whether afloat or ashore;  
 (c) They accept responsibility for any injury, damage or loss to the extent caused by their own actions or omissions;

- (d) Their boat is in good order, equipped to sail in the event and they are fit to participate;
- (e) The provision of a race management team, patrol boats, and other officials and volunteers by the event organiser does not relieve them of their own responsibilities;
- (f) The provision of patrol boat cover is limited to such assistance, particularly in extreme weather conditions, as can be practically provided in the circumstances;
- (g) It is their responsibility to familiarize themselves with any risks specific to this venue or this event drawn to their attention in any rules and information produced for the venue or event and to attend any competitor or safety briefing held for the event.

### **23. INSURANCE**

- 23.1 Each participating boat is insured with valid third-party liability insurance with a minimum cover of £3 million per incident or the equivalent.

### **24. PRIZES**

- 24.1 Trophies will be awarded to the first, second and third boats in the series.

### **25. FURTHER INFORMATION**

For further information please contact:

The Royal Yacht Squadron  
The Castle  
Cowes, UK, PO31 7QT  
Tel: +44 1983 292 191  
[mail@rys.org.uk](mailto:mail@rys.org.uk)

### **NOTICE OF RACE ENDS**

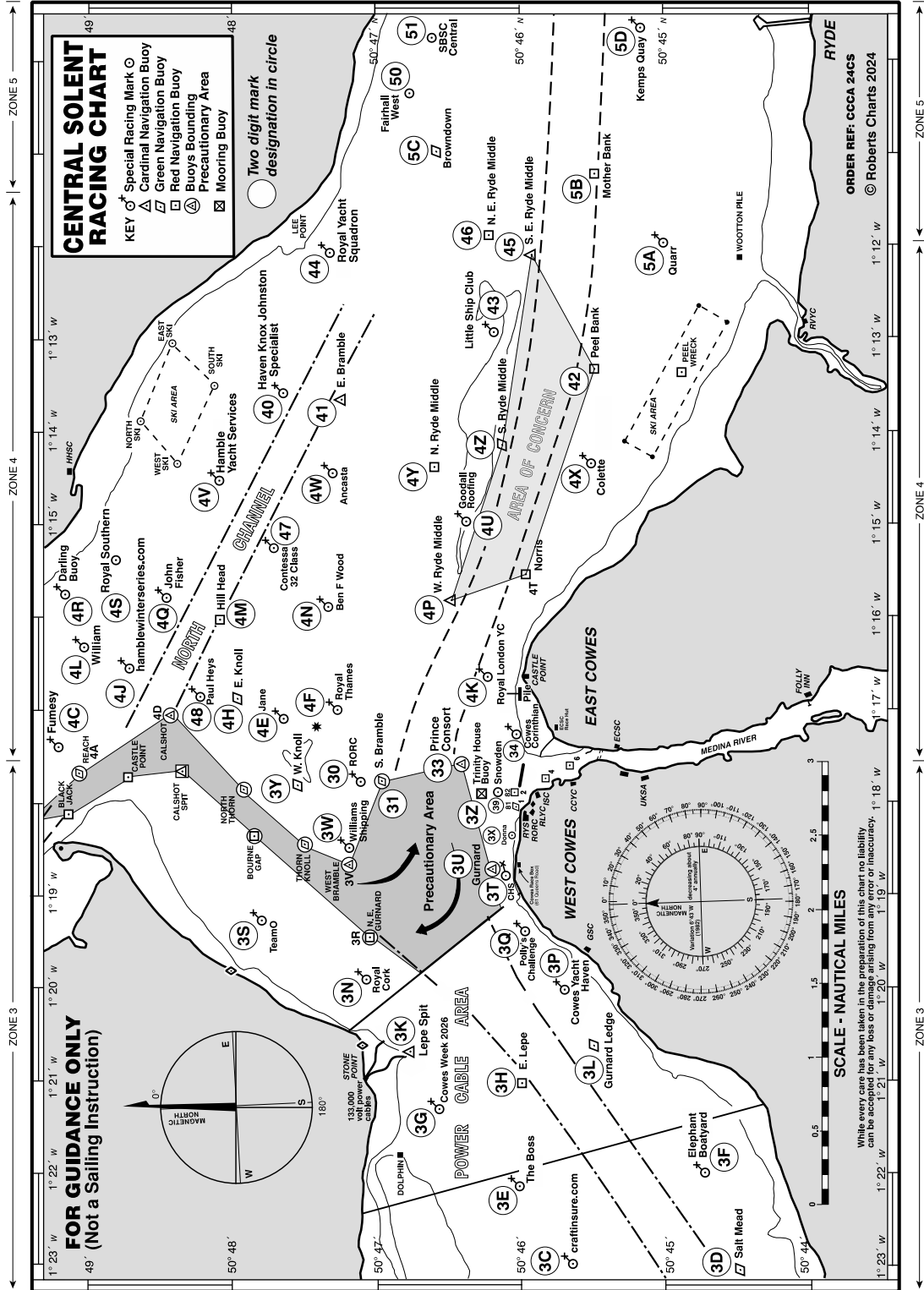
### **SOCIAL ARRANGEMENTS**

Further details of the social programme will be available in a separate document.

Additional social tickets will be available for purchase from RYS.

**ADDENDUM A.**

See below a chartlet of the Racing Area showing the Solent Two Character Codes. (The 2025 chartlet will be included when available in the SIs)



All correspondence should be directed to:

The Royal Yacht Squadron, The Castle, Cowes, UK, PO31 7QT. Tel: 01983 292191, Email: [mail@rys.org.uk](mailto:mail@rys.org.uk)