

J70 CLASS SOUTH COAST CHAMPIONSHIPS 12 – 13 JULY

ORGANISING AUTHORITY ROYAL YACHT SQUADRON COWES

SAILING INSTRUCTIONS

1. RULES

- 1.1. See Notice of Race (NoR) 1.

2. CHANGES TO SAILING INSTRUCTIONS

- 2.1. Any change to the Sailing Instructions (SIs) made ashore will be posted by 0900 on the day it will take effect, except that any change to the schedule of races will be posted by 2000 on the day before it will take effect.
- 2.2. Changes to the SIs may be made on the water by announcement over VHF as well as confirmation of the change via the Event Messaging System (Telegram).

3. COMMUNICATIONS WITH COMPETITORS

- 3.1. Notices to competitors will be posted on the Official Notice Board (ONB). The ONB will be online at www.rys.org.uk.
- 3.2. The Race Office is in the Royal Yacht Squadron (RYS).
- 3.3. There will be a daily briefing posted on the event Telegram Group by 0900 each day, see Addendum C.
- 3.4. The Race Committee (RC) intends to broadcast race and course information by VHF Ch 05 repeated on the Event Telegram Group. See Addendum C.
- 3.5. On each racing day, the RC will provide a morning briefing by Telegram at 0900.
- 3.6. Competitors wishing to communicate with the Race Committee should do so on VHF Ch 77.
- 3.7. The RC intends to announce approximate location of the Committee Vessel (CV) in the morning briefing.

4. CODE OF CONDUCT

- 4.1. Competitors and support persons shall comply with reasonable requests from race officials.

5. SIGNALS MADE ASHORE AND AFLOAT

- 5.1. Signals made ashore will be displayed at the RYS Lodge Flagstaff and may be communicated by VHF and the Event Telegram Group.

- 5.2. When Flag AP is displayed ashore, "1 minute" is replaced by "not less than 45 minutes". This changes Race Signals AP.

6. SCHEDULE OF RACES

- 6.1. See NoR 9.
- 6.2. To alert boats that a race or sequence of races will begin soon, the orange starting line flag will be displayed with multiple sound signals at least 5 minutes before a warning signal is made.

7. CLASS FLAGS

- 7.1. The Class Flag will be Flag J:



8. RACING AREA

- 8.1. Racing will take place from a CV in the Central and Eastern Solent.

9. COURSES

- 9.1. The courses to be sailed will be W/L configuration as described in Addendum A.
- 9.2. If only a single windward or leeward mark is present, boats shall leave that mark to port before proceeding to the next mark of the course.
- 9.3. Soon after the orange flag attention signal for windward leeward starts is displayed and before the warning signal, the RC signal vessel may display the approximate distance and bearing to Mark 1 and this may also be announced on VHF.

10. MARKS

- 10.1. With reference to Addendum A, Marks 1, 1a, 4s & 4p will be orange inflatable marks.
- 10.2. The starting and finishing marks will be a CV and a blue inflatable buoy with white stripe.
- 10.3. Change marks will be black inflatable marks.
- 10.4. An RC vessel positioned near a mark may display a flag showing the colour of the next mark, except for the final leg to the finish line.

11. OBSTRUCTIONS

- 11.1. All yachts shall comply with [Associated British Ports Notice to Mariners No 06 of 2025](#) giving details of a Precautionary Area and Moving Prohibited Zone (MPZ). The MPZ shall rank as an obstruction for the purposes of RRS 19 and 20.
- 11.2. Whilst racing, boats shall pass to the north of the Cowes Breakwater and the row of summer event moorings.
- 11.3. Any official boat in close attendance to a craft in difficulty is an obstruction.

12. THE START

- 12.1. Races will be started using RRS 26.
- 12.2. The start line is between a staff displaying an orange flag on the CV and the course side of the starting mark.
- 12.3. If any part of a boat's hull is on the course side of the starting line at her starting signal and she is identified, the RC will attempt to broadcast her sail number on VHF Ch 05, as soon as practicable after Flag X has been displayed.

Delay or failure to do so is not grounds for redress. This changes RRS 62.1(a).

- 12.4. A boat that does not start within five (5) minutes after her starting signal will be scored Did Not Start without a hearing. This changes RRS A5.1 and A5.2.

13. CHANGE OF THE NEXT LEG OF THE COURSE

- 13.1. When a change of the next leg of the course has been signalled, the RC will lay a new mark (or move the finishing line) and remove the original mark as soon as practicable. When in a subsequent change a new mark is replaced, it will be replaced by an original mark.
- 13.2. The position of any mark(s) may be adjusted by up to plus or minus 10 degrees relative to previous location and up to approximately 200 metres to windward or leeward without signalling Flag C, a direction signal, a length signal, a sound signal or announcement using VHF. This changes RRS 33.

14. THE FINISH

- 14.1. The finishing line will be between a staff displaying a Blue Flag on the CV and the course side of the finishing mark.

15. PENALTY SYSTEM

- 15.1. See NoR 14.

16. TIME LIMITS

- 16.1. The Mark 1 Time Limit, Race Time Limit (see RRS 35), Finishing Window and the Target Time are shown in the table below.

Mark 1 Time Limit	Race Time Limit	Finishing Window	Target Race Time
30 mins	90 mins	20 mins	50 mins

- 16.2. If no boat has passed the first mark within the Mark 1 Time Limit, or if no boat has finished within the Race Time Limit, the race will be abandoned.
- 16.3. The Finishing Window is the time for boats to finish after the first boat sails the course and finishes. Boats failing to finish within the Finishing Window, and not subsequently retiring, penalized or given redress, will be scored TLE without a hearing. A boat scored TLE shall be scored points for the finishing place two more than the points scored by the last boat that finished within the Finishing Window. This changes RRS 35, A5.1, A5.2 and A10.
- 16.4. Failure to meet the Target Race Time will not be grounds for redress. This changes RRS 62.1(a).

17. HEARING REQUESTS

- 17.1. Hearing request forms will be available at the Race Office. Protest and requests for redress or reopening shall be delivered to the Race Office within the protest time limit. Contact mobile phone numbers should be included on the form.
- 17.2. The protest limit is 90 minutes after the last boat has finished the last race of the day or the CV signals no more racing today, whichever is later.
- 17.3. Notices will be posted no later than 30 minutes after the protest time limit to inform competitors of the hearings in which they are parties or named as witnesses. Hearings will be held in the Protest Room located at the RYS.

18. SCORING

- 18.1. See NoR 15.

19. SAFETY REGULATIONS

- 19.1. A boat that retires from a race shall notify the RC as soon as possible, which may be on VHF Ch 77, or by hailing an official support boat or RIB. *[DP]*

20. REPLACEMENT OF CREW OR EQUIPMENT

- 20.1. Substitution of competitors is not allowed without the prior written permission of the RC.
- 20.2. Substitution of damaged or lost equipment is not allowed unless authorised in writing by the RC. Requests for substitution shall be made to the RC at the first reasonable opportunity, which may be after the race.

21. EQUIPMENT AND MEASUREMENT CHECKS

- 21.1. A boat or equipment may be inspected at any time for compliance with the class rules, notice of race and sailing instructions.

22. SUPPLIED BOATS

- 22.1. Not used.

23. OFFICIAL VESSELS

- 23.1. The CV (Signal Vessel) will be a blue hulled catamaran Call Sign "Castle Two".
- 23.2. Mark laying vessels will be RYS RIBs.

24. SUPPORT TEAMS

- 24.1. See NoR 16.

25. TRASH DISPOSAL

- 25.1. Trash may be placed aboard support or official boats.

26. BERTHING

- 26.1. See Notice of Race 18.

27. HAUL OUT RESTRICTIONS

- 27.1. See NoR 19.

28. DIVING EQUIPMENT AND PLASTIC POOLS

- 28.1. See NoR 20.

29. PRIZES

- 29.1. See NoR 24.

30. RISK STATEMENT

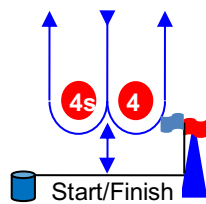
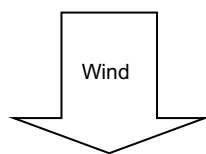
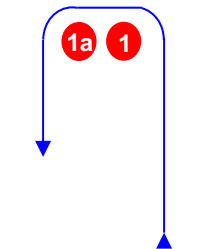
- 30.1. See NoR 22.

31. INSURANCE

- 31.1. See NoR 23.

Course Illustrations – Windward Leeward

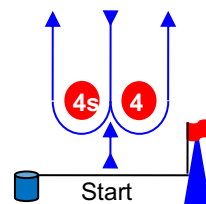
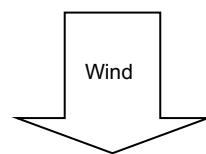
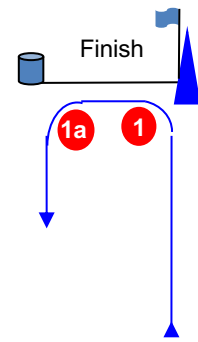
LA



Course: Leeward finish

Signal	Mark Rounding Order
LA 1	Start – 1 – 1a – Finish.
LA 2	Start – 1 – 1a – 4s/4p – 1 – 1a – Finish
LA 3	Start – 1 – 1a – 4s/4p – 1 – 1a – 4s/4p – 1 – 1a – Finish.
LA 4	Start – 1 – 1a – 4s/4p – 1 – 1a – 4s/4p – 1 – 1a – 4s/4p – 1 – 1a – Finish.

WA

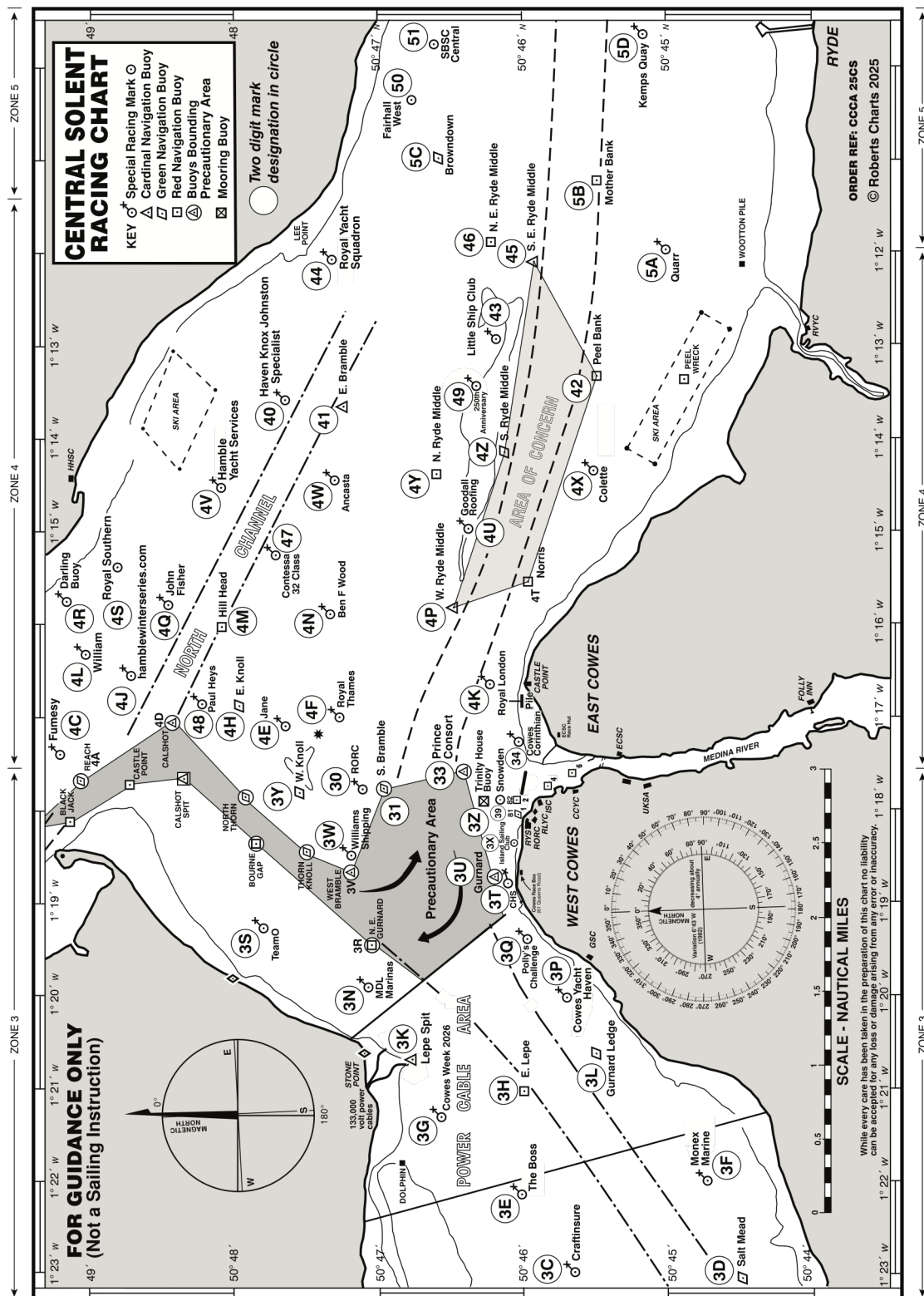


Course: Windward Finish

Signal	Mark Rounding Order
WA 2	Start – 1 – 1a – 4s/4p – Finish
WA 3	Start – 1 – 1a – 4s/4p – 1 – 1a – 4s/4p – Finish.
WA 4	Start – 1 – 1a – 4s/4p – 1 – 1a – 4s/4p – 1 – 1a – 4s/4p – Finish.

ADDENDUM B

Chartlet of the Racing Area showing the Solent Two Character Code.



All correspondence should be directed to:

Royal Yacht Squadron^{LTD}, The Castle, Cowes, UK, PO31 7QT. Tel: 01983 292191, Email: mail@rys.org.uk

ADDENDUM C



Telegram

An Official [Telegram](#) Group has been set-up for receiving general information from the Race Office and Race Committee.

If you do not already have the Telegram App installed on your device, please follow the instructions below:

- Apple iPhones – download and install via the App Store.
<https://apps.apple.com/app/telegram-messenger/id686449807>
- Android Phones – download and install via the Google Play Store.
<https://play.google.com/store/apps/details?id=org.telegram.messenger>

To join the Telegram group please use either the link or the QR code below:

LINK: <https://t.me/+aaAQUOat3ehmYmY0>

QR Code:

