



THE CASTLE TROPHY

23 - 26 MAY 2025

ORGANIZING AUTHORITY (OA)

ROYAL YACHT SQUADRON

COWES

in association with
GSTAAD YACHT CLUB
GSTAAD

FLEET RACING SAILING INSTRUCTIONS

Incorporating Change Five

1. RULES

- 1.1. See Notice of Race (NoR) **1 Rules**.
- 1.2. RRS Appendix D1 and D2 apply.
- 1.3. Team Racing SIs Addenda A, B and C apply, except for SIs C2.1.
- 1.4. RRS 20.4 is changed so that the arm signals specified in RRS D1.1(d) are required in addition to the hails.
- 1.5. J70 Class Rules do not apply.

2. CHANGES TO SAILING INSTRUCTIONS (SIs)

- 2.1. Any change to the SIs made ashore will be posted by 0900 on the day it will take effect, except that any change to the Schedule of races will be posted by 2000 on the day before it will take effect.

3. COMMUNICATIONS WITH COMPETITORS

- 3.1. See NoR **3 Communication**.

4. CODE OF CONDUCT

- 4.1. Competitors and support persons shall comply with reasonable requests from race officials.

5. SIGNALS MADE ASHORE

- 5.1. Signals made ashore will be displayed at the RYS and advised on the Event Telegram Group.

- 5.2. When Flag AP is displayed ashore, "1 minute" is replaced by "not less than 45 minutes". This changes Race Signals AP.


6. SCHEDULE

- 6.1. The times shown in the table below are Local Time in Cowes, with High Water (HW) Portsmouth.

DATE	TIME	FIRST WARNING SIGNAL	ACTIVITIES
23 May 2025 Cowes HW 0840 – 4.1m	1200 1830 1900 1945		Sailing Practice Event Briefing Opening Reception Supper RYS Platform
24 May 2025 Cowes HW 0940 – 4.3m	1830 1915 2000	0900 1025	Telegram Briefing Fleet Racing Team Racing Mandatory Briefing Prizegiving RYS Pavilion Dinner RYS Platform
25 May 2025 Cowes HW 1030 – 4.5m	2000	0900 1030	Telegram Briefing Team Racing BBQ RYS Pavilion
26 May 2025 Cowes HW 1120 – 4.7m	1415 1535	0900 1000	Telegram Briefing Team Racing Prizegiving RYS Pavilion Red Jet Departs

- 6.2. On the last scheduled day of racing no Warning Signal will be made after 1300.

7. CLASS FLAG

- 7.1. The Class Flag will be Flag J 

8. RACING AREA

- 8.1. The racing will take place from either The Castle, or CASTLE TWO in the Solent. The intended location of the CASTLE TWO will be publicized at the Daily Telegram Briefing, and announced on VHF Channel 77.

9. COURSES

- 9.1. The Race Committee (RC) intends to set courses in the Solent using fixed navigation buoys, racing marks and inflatable buoys using the Solent Two Character Codes. See SIs Addenda A & B.

10. MARKS

- 10.1. RYS LINE. The Starting and Finishing Line limit mark will be an Orange Inflatable mark with RYS printed in black letters.
- 10.2. CV LINE. The Starting and Finishing marks will be a small White inflatable ODM, which may display a flag.

11. OBSTRUCTIONS

- 11.1. All yachts shall comply with [Associated British Ports Notice to Mariners No 06 of 2025](#) giving details of a Precautionary Area and Moving Prohibited Zone (MPZ).

The MPZ shall rank as an obstruction for the purposes of RRS 19 and 20.

- 11.2. Whilst racing, boats shall pass to the north of the Cowes Breakwater.
- 11.3. Any official boat in close attendance to a craft in difficulty is an obstruction.

12. RYS START

- 12.1. Races will be started by using the below system. This changes RRS 26.

Signal	Minutes before Starting Signal	Sound Signal	Visual Signals
Warning	3	One	Flag J displayed
Preparatory	2	One	Flag P displayed
One-minute	1	One Long	Flag P removed
Starting	0	One	Flag J removed

- 12.2. The RYS starting line consists of an inner line, an outer line or a combined line and will be announced with the course.
- 12.3. The RYS Start Line is formed by bringing the RYS Main Flagstaff into line with the white line on the orange diamond on the Castle, on a bearing of approximately 346°(T) from the RYS Flagstaff and limited by limit marks. An Orange Flag will not be displayed. This changes Race Signals Orange Flag.
- 12.4. Vertical light beams are installed to help identify the starting line transit. The intensity of the light beams intensifies as the transit is approached and at the approximate point of transit, the flagstaff momentarily obscures the lower rear light. These lights are a navigational aid only and do not constitute the starting line, nor will a start be postponed because of any failure of the lighting equipment.
- 12.5. The limit marks, all of which rank as starting marks and may not be precisely on the transit, are as follows:
- (a) 'Alpha' (a large Orange Inflatable mark approximately 180m to the north of the RYS Flagstaff)
 - (b) Inner Distance Mark (IDM) (a large Orange Inflatable mark approximately 80m to the north of the RYS Flagstaff)
- 12.6. The RC will announce the intended direction of start not less than fifteen minutes before the start of each race. A signal displayed at the RYS Lodge Flagstaff will also indicate the direction of the start. A Red flag indicates starting to the East. A Green flag indicates starting to the West.
- 12.7. The RC may broadcast the sail numbers of individually recalled boats on VHF Ch 77, as soon as practicable after Flag X has been displayed. Delay or failure to do so is not grounds for redress. This changes RRS 62.1(a).

12.8. COMMITTEE VESSEL (CV) START

- 12.9. Races will be started by using the below system. This changes RRS 26.

Signal	Minutes before Starting Signal	Sound Signal	Visual Signals
Warning	3	One	Flag J displayed
Preparatory	2	One	Flag P displayed
One-minute	1	One Long	Flag P removed
Starting	0	One	Flag J removed

To alert boats that a race will soon begin, the Orange Flag will be displayed One (1) minute before the Warning Signal accompanied by multiple sound signals.

- 12.10. The Start Line will be between an Orange Staff displaying an Orange Flag on the CV and the course side of the ODM.
- 12.11. The RC may broadcast the sail numbers of individually recalled boats on VHF Ch 77, as soon as practicable after Flag X has been displayed. Delay or failure to do so is not grounds for redress. This changes RRS 62.1(a).

13. CHANGE OF THE NEXT LEG OF THE COURSE

- 13.1. Does not apply.

14. RYS FINISH

- 14.1. The RYS Finishing Line will be between the RYS main flagstaff and 'Alpha' a large Orange Inflatable buoy approximately 100m north of the RYS Main Flagstaff. A Blue Flag will not be displayed. This changes Race Signals Blue Flag.
- 14.2. **CV FINISH**
- 14.3. The Finishing Line will be between a staff displaying a Blue Flag on the CV, and the course side of the ODM.

15. PENALTY SYSTEM

- 15.1. See NoR **14 Penalty System**.

16. TIME LIMITS

- 16.1. Does not apply.

17. HEARING REQUESTS

- 17.1. The protest limit is 90 minutes after the last boat has finished the last race of the day or the RC signals no more racing today, whichever is later.
- 17.2. Hearing forms will be available at the Race Office.
- 17.3. Protest and requests for redress or reopening shall be delivered to the Race Office within the Protest Time Limit. Contact mobile phone numbers should be included on the Protest Form.
- 17.4. Notices will be posted no later than 30 minutes after the Protest Time Limit to inform competitors of the hearings in which they are parties or named as witnesses. Hearings will be held in the Protest Room located at the RYS.
- 17.5. The right of appeal from a Protest Committee Decision is denied as provided in RRS 70.3(b)(c)(d).

18. SCORING

- 18.1. See NoR **15 Scoring**.

19. SAFETY REGULATIONS

- 19.1. A boat that retires from a race shall notify the RC as soon as possible on VHF Ch 77.

20. REPLACEMENT OF CREW OR EQUIPMENT

- 20.1. Substitution of crew is permitted.

21. EQUIPMENT AND MEASUREMENT CHECKS

- 21.1. A boat or equipment may be inspected at any time.

22. SUPPLIED BOATS

- 22.1. Class J70 boats shall be provided by the OA.

23. OFFICIAL VESSELS

- 23.1. The CV is CASTLE TWO, a blue-hulled catamaran boat, with the word COMMITTEE displayed on each side of the hull.
- 23.2. Mark-laying vessels will be RYS ribs.

24. SUPPORT PERSON VESSELS

- 24.1. See Notice of Race **16 Support Person Vessels**.

25. TRASH DISPOSAL

- 25.1. Trash may be placed aboard official or support vessels.

26. BERTHING

- 26.1. Berthing is in RYS Haven.

27. HAUL OUT RESTRICTIONS

- 27.1. See Notice of Race **19 Launching and Haul-Out Restrictions**.

28. DIVING EQUIPMENT AND PLASTIC POOLS

- 28.1. See Notice of Race **20 Diving Equipment and Plastic Pools**.

29. PRIZES

- 29.1. See Notice of Race **24 Prizes**

30. RISK STATEMENT

- 30.1. See Notice of Race **22 Risk Statement**.

31. INSURANCE

- 31.1. See Notice of Race **23 Insurance**.

32. FURTHER INFORMATION

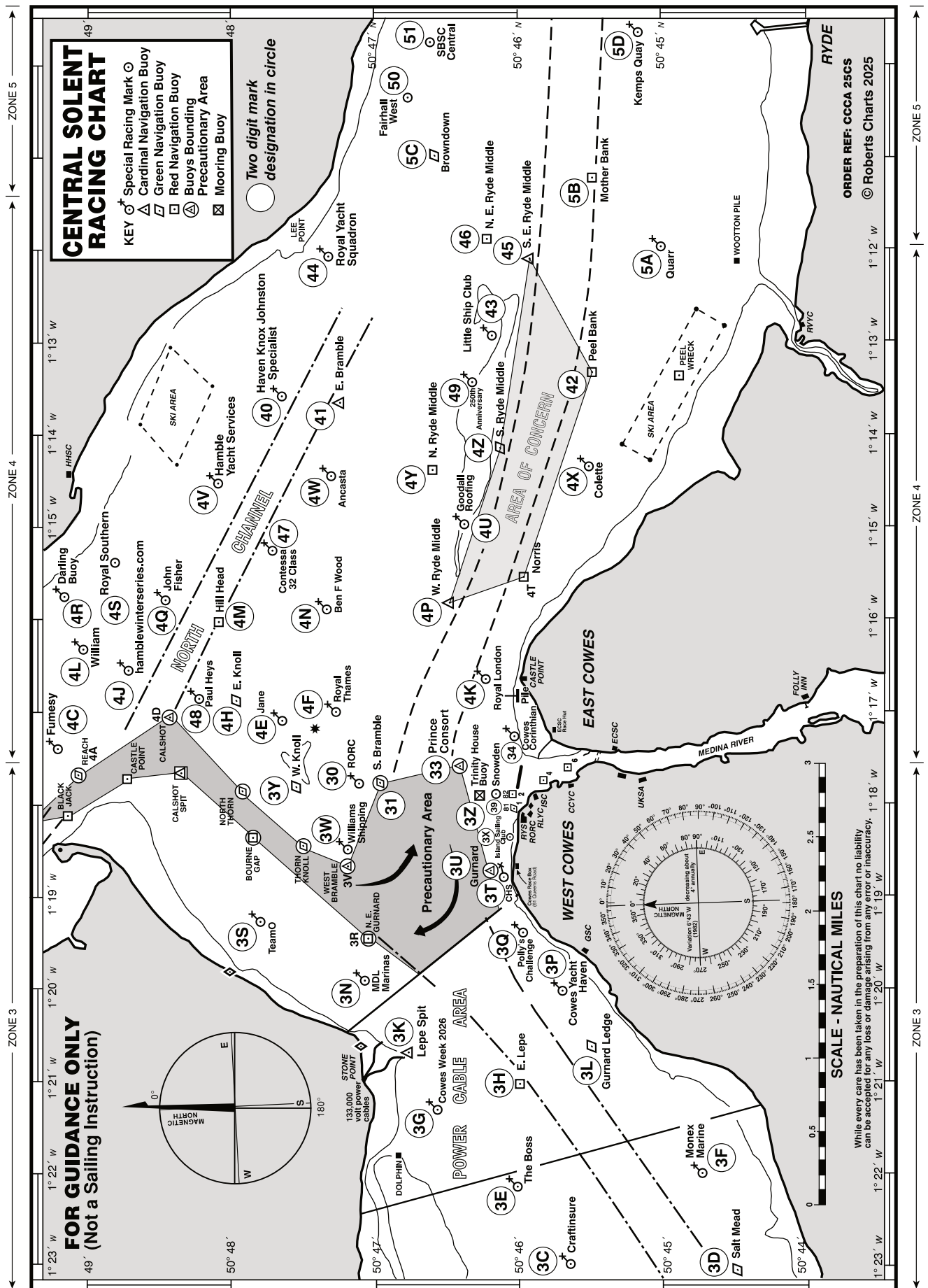
- 32.1. Further information requests or completed entries should be sent to the Organizing Authority:
mail@rys.org.uk

ADDENDA

- A. Chartlet of the Racing Area with Two Character Codes.
- B. Windward Leeward Courses.
- C. Telegram Instructions.
- D. Sailor's Agreement.

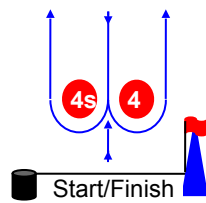
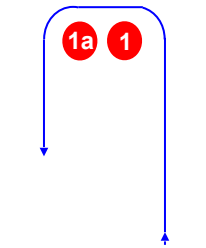
ADDENDUM A

Chartlet of the Racing Area with Two Character Codes



All correspondence should be directed to:

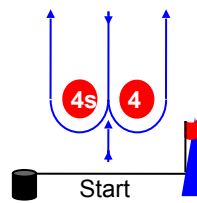
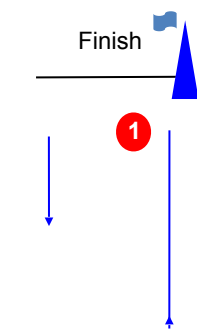
The Royal Yacht Squadron, The Castle, Cowes, UK, PO31 7QT. Tel: 01983 292191, Email: mail@rys.org.uk

ADDENDUM B:**Course Illustrations – Windward Leeward****LA****Course: Leeward**

Signal Mark Rounding Order

LA 1 Start – 1 – 1a – Finish.**LA 2** Start – 1 – 1a – 4s/4p – 1 – 1a – Finish**LA 3**

Start – 1 – 1a – 4s/4p – 1 – 1a – 4s/4p – 1 – 1a – Finish.

LA 4 Start – 1 – 1a – 4s/4p – 1 – 1a – 4s/4p – 1 – 1a – 4s/4p – 1 – 1a – Finish.**WA****Course: Windward**

Signal Mark Rounding Order

WA 2 Start – 1 – 1a – 4s/4p – Finish**WA 3** Start – 1 – 1a – 4s/4p – 1 – 1a – 4s/4p – Finish.**WA 4** Start – 1 – 1a – 4s/4p – 1 – 1a – 4s/4p – 1 – 1a – 4s/4p – Finish.

ADDENDUM C:

TELEGRAM INSTRUCTIONS



Telegram

We have set up an official [Telegram](#) group for receiving general information from the Race Office and Race Committee.

If you do not already have the Telegram app installed on your device, please follow the instructions below:

- **Apple iPhones** – download and install via the App Store.
<https://apps.apple.com/app/telegram-messenger/id686449807>
- **Android Phones** – download and install via the Google Play Store.
<https://play.google.com/store/apps/details?id=org.telegram.messenger>

To join the Telegram Group please use either the link or the QR code below:

LINK:

https://t.me/+hsrNgkLHD_YzOTlk

QR:



ADDENDUM D:[\(Online form\)](#)

ROYAL YACHT SQUADRON
Tel: 01983 292191 Email: mail@rys.org.uk
SAILOR AGREEMENT FORM (the "Sailor Agreement")

EVENT NAME:	The Castle Trophy
DATES:	23-26 May 2025
NAME:	
CLUB:	
MOBILE TELEPHONE:	
EMAIL ADDRESS:	
EMERGENCY CONTACT NAME:	
EMERGENCY CONTACT TELEPHONE NUMBER:	

HEALTH DECLARATION

Details of any medical treatment being received by any crew member (if none, write none):

I declare that to the best of my knowledge, that no crew members are suffering from epilepsy, disability, giddy spells, asthma, diabetes, angina or other heart condition, and are fit to participate.

Signature:

EVENT DECLARATIONS

- **I agree to report to the RYS Office any damage, breakage or loss of equipment concerning either the boat that I am sailing or another boat of which I become aware or with which I was involved in an incident. This also includes damage to Navigation Buoys.**
- **I agree to be bound by the Racing Rules of Sailing (RRS) and all other rules that govern this event. In particular, I confirm that I have read the Notice of Race and accept its provisions, including the Risk Statement and agree to conform to these requirements throughout the event.**

Signature: Date:.....