



BAR YC VS RNSA TEAM RACING

3 MAY 2025

ORGANIZING AUTHORITY (OA)

ROYAL YACHT SQUADRON (RYS)

SAILING INSTRUCTIONS (SIs)

Notations

The notation '[NP]' in a rule of the SIs means that a boat may not protest another boat for breaking that rule. This changes RRS 60.1(a).

Abbreviations:

CV – Committee Vessel
OA – Organizing Authority
ONB – Official Notice Board
RO – Race Office

PC – Protest Committee
RC – Race Committee
RRS – Racing Rules of Sailing 2025-28

1. RULES

- 1.1. The event will be governed by:
- 1.2. The 'rules' as defined in the RRS, including Appendix D, Team Racing Rules.
- 1.3. The rules for Handling Boats, SIs Addendum A, which also apply to any practice sailing.
- 1.4. RRS 20 is changed so that the following arm signals by the helm are required in addition to the hails:
 - (a) for room to tack, repeatedly and clearly pointing to windward; and
 - (b) for 'You tack', repeatedly and clearly pointing at the other boat and waving the arm to windward.
- 1.5. All races will be umpired. See SIs Addendum C.
- 1.6. RRS 14 shall apply at all times whether the boat is racing or not.
- 1.7. The right of appeal will be denied in accordance with RRS 70.5(a).
- 1.8. RRS 17 is deleted.
- 1.9. RRS 40.1 applies throughout the event.
- 1.10. Major changes to the RRS are detailed in SIs Addendum C.
- 1.11. Where there is reference in the RRS or in the SIs to the hull it will include the side extension tubes and connectors if fitted.
- 1.12. Each boat shall sail with a minimum of 3 and a maximum of four crew members.

All correspondence should be directed to:

The Royal Yacht Squadron, The Castle, Cowes, UK, PO31 7QT. Tel: 01983 292191, Email: mail@rys.org.uk

2. CHANGES TO SAILING INSTRUCTIONS

- 2.1. Changes to these SIs made ashore will be posted at least 60 minutes before the start of any race affected.
- 2.2. Code Flag L over the numeral pennant of the most recent amendment will be displayed ashore each day until the boats have departed for the racecourse.
- 2.3. Amendments made afloat will be signalled by the display of Code Flag L on the CV accompanied by three sound signals. An umpire may communicate these either verbally or in writing.

3. COMMUNICATIONS WITH COMPETITORS

- 3.1. The online ONB is located at www.rys.org.uk.
- 3.2. The RO is located in RYS.
- 3.3. On the water, the RC intends to communicate with competitors via the umpires.
- 3.4. All competitors shall attend the Briefing, unless excused by the OA. See NoR 9.2.
- 3.5. *[DP]* From the first Warning Signal until the end of the last race of the day, except in an emergency, a boat shall not make voice or data transmissions and shall not receive voice or data communication that is not available to all boats.

4. CODE OF CONDUCT

- 4.1. Competitors and support persons shall comply with reasonable requests from race officials.

5. SIGNALS MADE ASHORE

- 5.1. Signals made ashore will be displayed from the RYS Lodge Flagstaff.
- 5.2. When Flag AP is displayed ashore, '1 minute' is replaced with 'not less than 60 minutes' in Race Signals AP. This changes AP in Race Signals.

6. SCHEDULE OF RACES

- 6.1. The format of racing will be 3 boat team racing in J70s on one racecourse. Spinnakers will not be used.
- 6.2. Each subsequent race will be started as soon as practicable after the previous race. Boats are advised to stay close to the CV after finishing / retiring.
- 6.3. The scheduled time of the Warning Signal for the first race on the first day is at 1125.
- 6.4. The intention is to run a series of races with a target time of 15-20 minutes. The latest warning signal is 1500. There may be a short break for lunch.
- 6.5. There may be a passage race home under fleet racing rules and the course will be issued by the RC once the team racing has completed. The result will not count towards the overall results and is stand alone.

7. TEAM FLAGS

- 7.1. The Team flags will be RNSA – Blue, BAR YC - Yellow.

8. RACING AREA

- 8.1. The racing area is intended to be in Osborne Bay.

9. COURSES

- 9.1. The diagram in SIs Addendum E depicts the course, the order in which marks are to be passed, and the side on which each mark is to be left.

All correspondence should be directed to:

The Royal Yacht Squadron, The Castle, Cowes, UK, PO31 7QT. Tel: 01983 292191, Email: mail@rys.org.uk

9.2. The Course letter and number of laps will be displayed on the CV.

9.3. Courses will not be shortened. This changes RRS 32.

10. MARKS

10.1. Marks 1, 2, 3 and 4 are small orange inflatable marks.

10.2. The starboard-end Starting Mark will be the CV displaying an Orange Flag. The port-end Starting Mark will be a small White Danbuoy, which may display an Orange Flag.

10.3. The starboard end Finishing Mark will be the CV displaying an Orange Flag. The port-end Finishing Mark will be a small White Danbuoy, which may display an Orange Flag.

11. OBSTRUCTIONS

11.1. Not applicable.

12. THE START

12.1. Races will be started by using the following signals:

Signal	Minutes before Starting Signal	Sound Signal	Visual Signals
Warning	3	One	Team colours displayed
Preparatory	2	One	Flag P displayed
One-minute	1	One Long	Team colours removed
Starting	0	One	Flag P removed

12.2. Times shall be taken from the start of each sound signal. The failure or delay of a visual signal, including flags as specified above, shall be disregarded. This changes RRS 26.

12.3. To alert boats that a race will soon begin, a series of short sound signals will normally be made to advise competitors that a Warning Signal is imminent.

12.4. The Starting Line will be a straight line between the course side of the port-end Start Mark and the staff displaying an Orange Flag on the CV.

12.5. A buoy may be attached to a CV anchor line just below keel depth. Boats shall not pass between this buoy and the CV at any time. This buoy is part of the CV ground tackle. A breach of this SI shall be considered a breach of RRS 31.

13. CHANGE OF THE NEXT LEG OF THE COURSE

13.1. After the start of a race, the RC may change the position of any mark, except the position of a mark towards which boats are racing. This changes RRS 33 and will not be a cause for redress.

14. THE FINISH

14.1. The Finishing Line will be a straight line between the course side of the port-end Finish Mark and the staff displaying an Orange flag on the CV.

- 14.2. A buoy may be attached to a CV anchor line just below keel depth. Boats shall not pass between this buoy and the CV at any time. This buoy is part of the CV ground tackle. A breach of this SI shall be considered a breach of RRS 31.
- 14.3. Any signal (Whistle) at the Finish is only an indication that the boat signalled has crossed the Finish Line. It is not an indication that the boat has correctly sailed the Course and finished.

15. PENALTY SYSTEM

- 15.1. Damage penalties are listed in SIs Addendum B.
- 15.2. Umpired race penalties are listed in SIs Addendum C.

16. TIME LIMITS

- 16.1. There shall be no time limit for races. However, the RC may abandon a race for any reason. This changes RRS 32.

17. HEARING REQUESTS

- 17.1. Not applicable.

18. SCORING

- 18.1. The winning team of **each race** shall be scored zero (0). The losing team shall be scored one (1).
- 18.2. The overall winner will be the team with the lowest score.
- 18.3. One (1) race shall constitute a series and there will be no discarded scores.

19. SAFETY REGULATIONS

- 19.1. All competitors shall wear personal flotation devices.

20. REPLACEMENT OF CREW OR EQUIPMENT

- 20.1. Not applicable.

21. EQUIPMENT AND MEASUREMENT CHECKS

- 21.1. Not applicable.

22. SUPPLIED BOATS

- 22.1. J70 Class boats, and the sails to be used, will be provided by the OA and allocated as follows:
 - (a) BAR BOAT 1 – Sail Number: 735 – Boat Name: Aurora
 - (b) BAR BOAT 2 - Sail Number: 736 – Boat Name: Genesta
 - (c) BAR BOAT 3 - Sail Number: 737 – Boat Name: Valkyrie
 - (d) RNSA BOAT 1- Sail Number: 738 – Boat Name: Endeavour
 - (e) RNSA BOAT 2 - Sail Number: 739 – Boat Name: Sceptre
 - (f) RNSA BOAT 3 - Sail Number: 740 – Boat Name: Rita.
- 22.2. The boats to be sailed by a team will be identified by a coloured flag affixed to the backstay and to the shrouds. The Team Identification colours are Blue (RNSA) and Yellow (BAR).
- 22.3. The RC may require boats to reef their mainsails, in which case boats will be so informed by the umpires.
- 22.4. Other restrictions or instructions may be given to the boats verbally by an umpire. Code Flag L is not required.

23. OFFICIAL VESSELS

23.1. Further details of the Committee Vessel will be given at the briefing.

24. SUPPORT TEAMS

24.1. Not applicable.

25. TRASH DISPOSAL

25.1. Trash may be placed aboard official vessels or deposited ashore.

26. BERTHING

26.1. Boats will be berthed in Shepards Wharf.

27. HAUL-OUT RESTRICTIONS

27.1. Not applicable.

28. DIVING EQUIPMENT AND PLASTIC POOLS

28.1. Not applicable.

29. PRIZES

29.1. The HMS HURRICANE trophy will be awarded to the winning team.

30. RISK STATEMENT

30.1. Rule 3 of the Racing Rules of Sailing states: "The responsibility for a boat's decision to participate in a race or to continue racing is hers alone."

30.2. Sailing is by its nature an unpredictable sport and therefore involves an element of risk. By taking part in the event, each competitor agrees and acknowledges that:

- (a) they are aware of the inherent element of risk involved in the sport and accept responsibility for the exposure of themselves, their crew and their boat to such inherent risk whilst taking part in the event;
- (b) they are responsible for the safety of themselves, their crew, their boat and their other property whether afloat or ashore;
- (c) they accept responsibility for any injury, damage or loss to the extent caused by their own actions or omissions;
- (d) their boat is in good order, equipped to sail in the event and they are fit to participate;
- (e) the provision of a race management team, patrol boats, and other officials and volunteers by the event organiser does not relieve them of their own responsibilities;
- (f) the provision of patrol boat cover is limited to such assistance, particularly in extreme weather conditions, as can be practicably provided in the circumstances;
- (g) it is their responsibility to familiarize themselves with any risks specific to this venue or this event drawn to their attention in any rules and information produced for the venue or event and to attend any Briefing held for the event;
- (h) they are responsible for ensuring that their boat is equipped and seaworthy so as to be able to face extremes of weather; that there is a crew sufficient in number, experience and fitness to withstand such weather; and that the safety equipment is properly maintained, stowed and in date and is familiar to the crew.

31. INSURANCE

- 31.1. The OA provides insurance cover for the period of charter against fire and all usual marine and collision risks to include third party risks to such an extent as is required by law and in addition as the OA shall deem appropriate. A copy of the insurance policy is available for inspection if required. The hirer shall pay uninsured losses or damage.
- 31.2. The Insurance Damage Excess is up to £1,000 per boat per incident.

32. BREAKDOWN SCHEDULE

- 32.1. RRS D5 (Breakdowns) is deleted. After the Warning Signal, a race will not be postponed or abandoned due to breakdown. This will not be a cause for redress and changes RRS 62.1.
- 32.2. The time for repairs will be at the discretion of the RC.
- 32.3. Competitors shall be responsible for inspecting their boats before racing.
- 32.4. Competitors shall report any defects, damage or breakdown to an umpire or the RC at the first reasonable opportunity. The boat shall sail to the stern of a CV and display Flag L, if possible.
- 32.5. Before the Warning Signal of a race, or within two minutes of finishing, or within two minutes of changing into a new boat, whichever is later, a boat may display Flag L to signal breakdown or damage to the boat, her sails, or injury to her crew, and to request a delay to the next start. She shall proceed, as soon as possible, to a position to leeward of the Start CV, and remain there, unless otherwise directed.
- 32.6. When there is a risk of further damage if a boat continues racing after damage or breakdown, she shall immediately retire.
- 32.7. In the event of a breakdown, the RC may change the Race Schedule, and the allocated boats.

Addenda:

- A. Handling of Boats.
- B. Damage Penalties.
- C. Major Alterations to the RRS.
- D. Chartlet of sailing area.
- E. Courses.
- F. Telegram Group Instructions.

ADDENDUM A

HANDLING OF BOATS

A1. GENERAL

A1.1 While all reasonable steps are taken to equalise the boats, variations will not be a cause for redress. This changes RRS 62.1(a).

A2. [NP] PROHIBITED ITEMS and ACTIONS. Except in an emergency or in order to prevent damage or injury, or when directed by an umpire otherwise, the following are prohibited.

A2.1 Actions subject to Umpire-initiated penalties during a race:

- (a) Adjusting or altering the tension of standing rigging, excluding the backstay;
- (b) Changing the number of jib sheet purchases;
- (c) The use of electronic instruments other than compass, watches and small video devices such as Go-Pros;
- (d) The use of the shrouds (including any inner shrouds) above the lower bottle screw (turnbuckle), or the boom, to facilitate tacking or gybing;
- (e) Using a winch to adjust the mainsheet, backstay or vang;
- (f) Using a reef line as an outhaul;
- (g) Omitting any headsail car or turning block before sheeting onto a winch;

A2.2 Actions subject to protest by the RC or PC:

- (a) Any additions, omissions or alterations to the equipment supplied. In particular, the cutting or shortening of any sheets, control lines or other running rigging;
- (b) The replacement of any equipment without the sanction of the RC;
- (c) Sailing the boat in a manner that it is reasonable to predict would cause significant damage;
- (d) Moving equipment from its normal stowage position except when being used;
- (e) Boarding a boat without permission;
- (f) Taking a boat from its berth or mooring without having paid the required Damage Deposit or having permission from the RC, or while AP is displayed ashore;
- (g) Hauling-out a boat or cleaning surfaces below the waterline;
- (h) Marking directly on the hull or deck with permanent ink;
- (i) Perforating sails, even to attach tell tales;
- (j) The use of any equipment for a purpose other than that intended or specifically permitted.

A3. PERMITTED ITEMS and ACTIONS. The following are permitted.

A3.1 Taking on board and making appropriate use of the following equipment:

- (a) basic hand tools consisting of knife, pliers and screwdrivers but excluding hammers and saws;
- (b) adhesive tape;
- (c) line (elastic or otherwise of 4 mm diameter or less);
- (d) marking pens;
- (e) tell-tale material;
- (f) watch, timers and hand-held compass;

All correspondence should be directed to:

The Royal Yacht Squadron, The Castle, Cowes, UK, PO31 7QT. Tel: 01983 292191, Email: mail@rys.org.uk

- (g) shackles and clevis pins;
- (h) Velcro tape;
- (l) spare flags;
- (j) bosun's chair;
- (k) small video devices such as GoPro;
- (l) PFDs when not supplied by the OA.

A3.2 Using the items in SIs Addendum A3.1 to:

- (a) prevent fouling of lines, sails and sheets;
- (b) attach tell tales;
- (c) prevent sails being damaged or falling overboard;
- (d) mark control settings, with adhesive tape only;
- (e) make minor repairs and permitted adjustments;
- (f) make video recordings;
- (g) personal safety.

A3.3 Changing the number of mainsheet purchases.

A3.4 Using lazy sheets and control lines for the purpose of hiking normally. This changes RRS 49.1.

A4. MANDATORY ITEMS and ACTIONS. The following are mandatory:

A4.1 Whenever there has been contact, the crew of the boat shall inform the Repair Boat or race umpires at the end of the race to allow for inspection.

A4.2 At the end of each sailing day:

- (a) rolling, bagging and placement of the sails as directed;
- (b) leaving the boat in the same state of cleanliness as when first boarded that day;
- (c) releasing backstay tension.

A4.3 At the end of the final day for a particular boat, cleaning the boat (cabin and decks), removing all trash and removing all tape and marks.

A4.4 Any request to alter, in any way, the equipment on a boat shall be in writing, and worded to permit a Yes / No answer.

A4.5 Complying with any regulations, including speed restrictions and navigation marks, while leaving or returning to the berth or mooring.

A4.6 A breach of items SIs Addendum A4.2 and A4.3 will be considered as damage and the sum of £25 deducted from a helm's Damage Deposit.

ADDENDUM B

DAMAGE PENALTIES

Sis Addendum C3.11 permits umpires to determine the penalty for breaking RRS 14 without a hearing. This Addendum explains how damage will be assessed and prescribes the appropriate level of penalties. The PC may impose additional penalties if it has good reason to do so.

There are a number of things we are trying to achieve with penalties for damage:

- Minimise damage to keep costs down and avoid delays while boats are being repaired.
- Ensure that penalties are consistent and fit the breach.
- Keep race results “on the water”.

Damage Levels

Level	Extent	Effect
Level A - Minor Damage	Up to 1 man-hour to repair	Boat may race without repair.
Level B - Damage	More than 1 man-hour and up to 5 man-hours to repair	Boat may need some (temporary) work before racing again.
Level C - Major Damage	More than 5 man-hours to repair	Significant work required before racing again.

The assessment of damage level is only for the purpose of point-penalties, and is not linked to any OA deductions from the competitor’s Damage Liability.

Penalties

Penalties may be imposed by umpires after a race to boats that break RRS 14.

Any penalty will be based on the assessment of damage-level made on the water. Subsequent assessments of the damage-level after closer inspection, whether the level turns out to be higher or lower, will have no effect on the penalty given on the water.

Point-penalties are penalties that may be imposed by umpires or the PC after a race to boats that break RRS 14. The schedule of point-penalties is as follows:

Level	Penalty
Level A	No Penalty
Level B	1 race loss
Level C	3 race losses

Damage Deposits/Liabilities

There is a liability of up to £1,000 per incident.

All correspondence should be directed to:

The Royal Yacht Squadron, The Castle, Cowes, UK, PO31 7QT. Tel: 01983 292191, Email: mail@rys.org.uk

ADDENDUM C

MAJOR ALTERATIONS TO THE RRS

Changes to the rules of Part 2 have been authorized by World Sailing under RRS 86.2.

C1. Add new definitions.

C1.1 **Helm.** The Helm is the crew member on-board who is in charge of the boat and the crew and all other persons aboard.

C1.2 Not on a beat to windward

See World Sailing Case 132.

C1.3 **Another leg.** A boat passes to *another leg* of the course when her bow crosses the extension of the line from the previous mark through the mark she is rounding.

C.2 Changes to the rules of Part 2, 3 and 4

C2.1 RRS 17 is deleted.

C2.2 RRS 31 (Touching a Mark) is changed to:

“While *racing*, neither the crew nor any part of a boat's hull shall touch a starting *mark* before *starting*, a *mark* that begins, bounds or ends the leg of the course on which she is sailing, or a finishing *mark* after *finishing*. In addition, while *racing*, a boat shall not touch a race committee vessel that is also a *mark*.”

C2.3 Part 4 Preamble and RRS 40 is changed. See SI 1.6.

C2.4 Add to RRS 41: (e) help to recover from the water and return on board a crew member, provided the return on board is at the approximate location of the recovery.

C2.5 The umpires may decide that any hard contact (contact between hulls and / or rigs) is damage for the purposes of initiating a penalty under RRS D2.3(d).

C3. Changes to RRS Appendix D**Protests and Penalties**

C3.1 Delete RRS D1.2(c) and replace with:

“A boat intending to request redress for an incident in the racing area, or protest for an alleged breach of a rule other than a rule of Part 2 or rules 31 or 42, shall, at the first reasonable opportunity after she finishes, inform the Race Committee at the finishing line of her intention to protest or to request redress and, when applicable, identify the protested boat.”

C3.2 A boat intending to request redress under 62.1(b) or (c) for an incident in the racing area shall display a Red flag at the first reasonable opportunity after the incident. She shall display the Red flag until it is acknowledged by the RC or by an umpire.

C3.3 Delete RRS D1.2(g) and add new rule D1.2(g):

“Protests and requests for redress that deal with scoring and other matters that do not arise from incidents in the racing area shall be notified to the race office within 30 minutes after the finish of the last boat in the last race of the day. However, boats are required to notify the race officer as soon as practicable.”

C3.4 Add new rule D1.2(h):

“If the PC decides that a breach of a rule, other than a rule of RRS Part 2 has had no significant effect on the outcome of a race, it may make any arrangement it decides is equitable, which may be to order a re-sail or to impose no penalty.”

C3.5 RRS D1.3 (a) (Penalties) first sentence is changed to:

“When on an upwind leg of the course a boat may take a penalty by gybing, or when on a *leg to a leeward mark* of the course a boat may take a penalty by tacking when she may have broken one

or more rules of Part 2, or RRS 31 or RRS 42, in an incident while racing. Between the preparatory signal and the starting signal, the penalty shall be taken by gybing.”

C3.6 Add new RRS D1.3(e):

“When three race umpires decide that one or more boats has broken RRS 14 in an incident where there is damage and/or injury, they may impose race-loss penalties as prescribed in SI Addendum B without a hearing but shall not add points to a boat's score. The boat(s) shall be informed as soon as practical and only at that time may she request a hearing, in which case the umpires shall report the incident to the protest committee who shall proceed in accordance with RRS Appendix D3.1(e). Any penalties imposed after a hearing may be more than the penalties imposed by the umpires.” This changes RRS D3.1(e)(1) and RRS D3.1(e)(3).

Umpired Races

C3.7 RRS D2.2 (a) (Protests by Boats) is changed to:

“She shall hail “Protest” and conspicuously display a Yankee flag at the first reasonable opportunity for each”.

C3.8 RRS D2.3 (Protests imposed by Umpires) is amended as follows:

- A boat penalized by an umpire shall take a One-Turn Penalty. However, when a penalty is imposed under rule D2.3, and an umpire hails or signals a number of turns, the boat shall take that number of One-Turn Penalties.

C3.9 Add RRS D.2.3(h) (Penalties Initiated by an Umpire):

“a boat fails to comply with any ‘Prohibited Items and Actions’ in SIs Addendum A2.”

C3.10 RRS D2.4(b) (Signals by an Umpire) is amended as follows:

“To penalize a boat a coloured flag identifying the boat, with one long sound, and pointing the coloured flag at her means: “The identified boat shall take a penalty by complying with SI Addendum C3.8.”

Scoring

C3.11 RRS D3.1(e)(3) is deleted and replaced with the following:

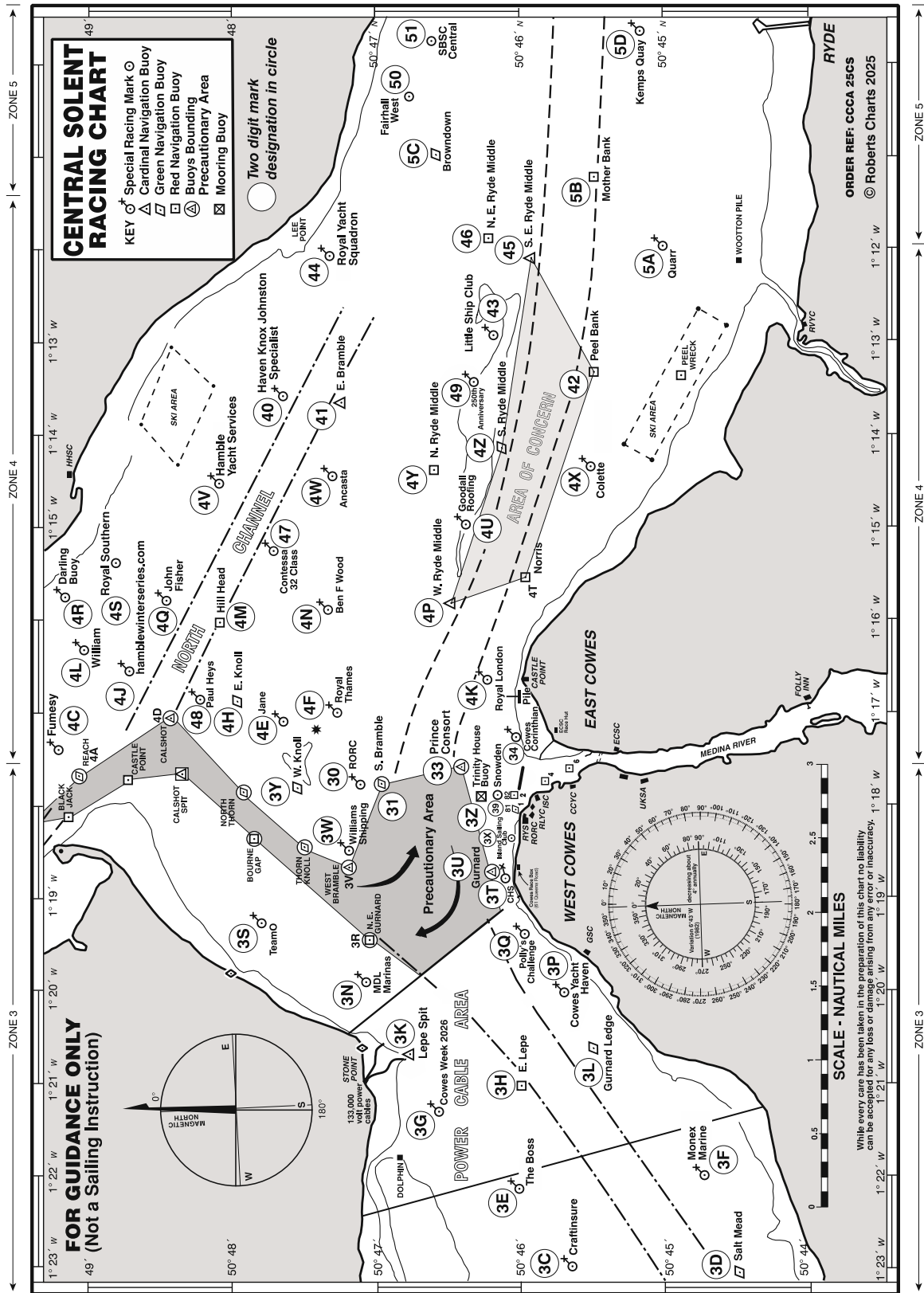
“when the boat has broken rule 1, 2, or 14 when she has caused damage or injury, or a *rule* when not *racing*, half or more race loss points may be added to her team score, or no penalty may be imposed. For breaches of RRS 14 with damage and / or injury, SI Addendum B details the procedure.

C2.12 RRS D4.2, D4.3, D4.4, and D4.5 (Scoring) are deleted. See SI 18.

Breakdowns

C3.13 RRS D5 (Breakdowns) is deleted. After the Warning Signal, a race will not be postponed or abandoned due to breakdown. This will not be a cause for redress and changes RRS 62.1.

ADDENDUM D



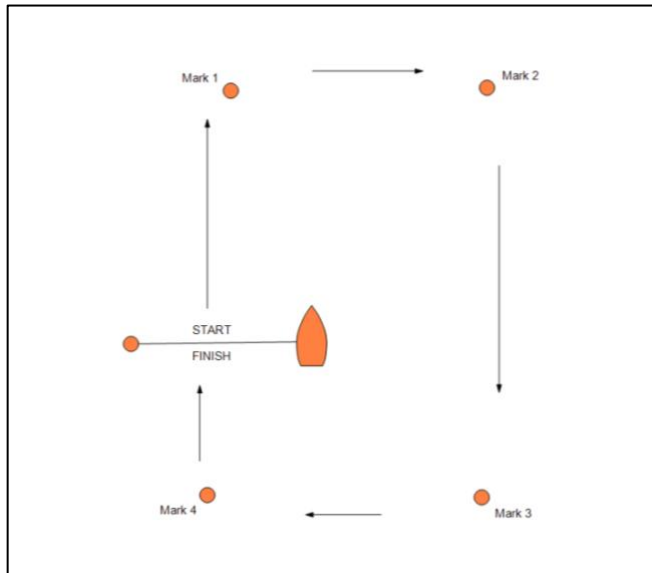
All correspondence should be directed to:

The Royal Yacht Squadron, The Castle, Cowes, UK, PO31 7QT. Tel: 01983 292191, Email: mail@rys.org.uk

ADDENDUM E

COURSE DIAGRAM

Box Course – (Not to Scale)

**Course 'S':**

Start, round marks 1, 2, 3 and 4 in that order, finish.

Number of laps will be displayed on the CV next to the course identifier e.g. S2.

Marks are rounded to starboard.

On Leg 3, all start and finish marks shall be passed on the same side as the marks, and boats shall not cross the start or finish line, which rank as obstructions.

ADDENDUM F



Telegram

We have set up a [Telegram](#) group for receiving general information from the Race Office and Race Committee.

If you do not already have the Telegram app installed on your device, please follow the instructions below:

- **Apple iPhones – download and install via the App Store.**
<https://apps.apple.com/app/telegram-messenger/id686449807>
- **Android Phones – download and install via the Google Play Store.**
<https://play.google.com/store/apps/details?id=org.telegram.messenger>

To join the Telegram group please use either the link or the QR code below:

LINK:

<https://t.me/+wezacaDvhEwMTFk>



QR:

Instructions on using QR codes:

- For Apple phones: Please open your camera app and point it at the QR code and then follow the link it displays on your screen.
- For Android phones: Please obtain a barcode scanning app from the Google Play Store such as “Barcode Scanner”, open the barcode scanning app and point it at the QR code and then follow the link it displays on your screen.